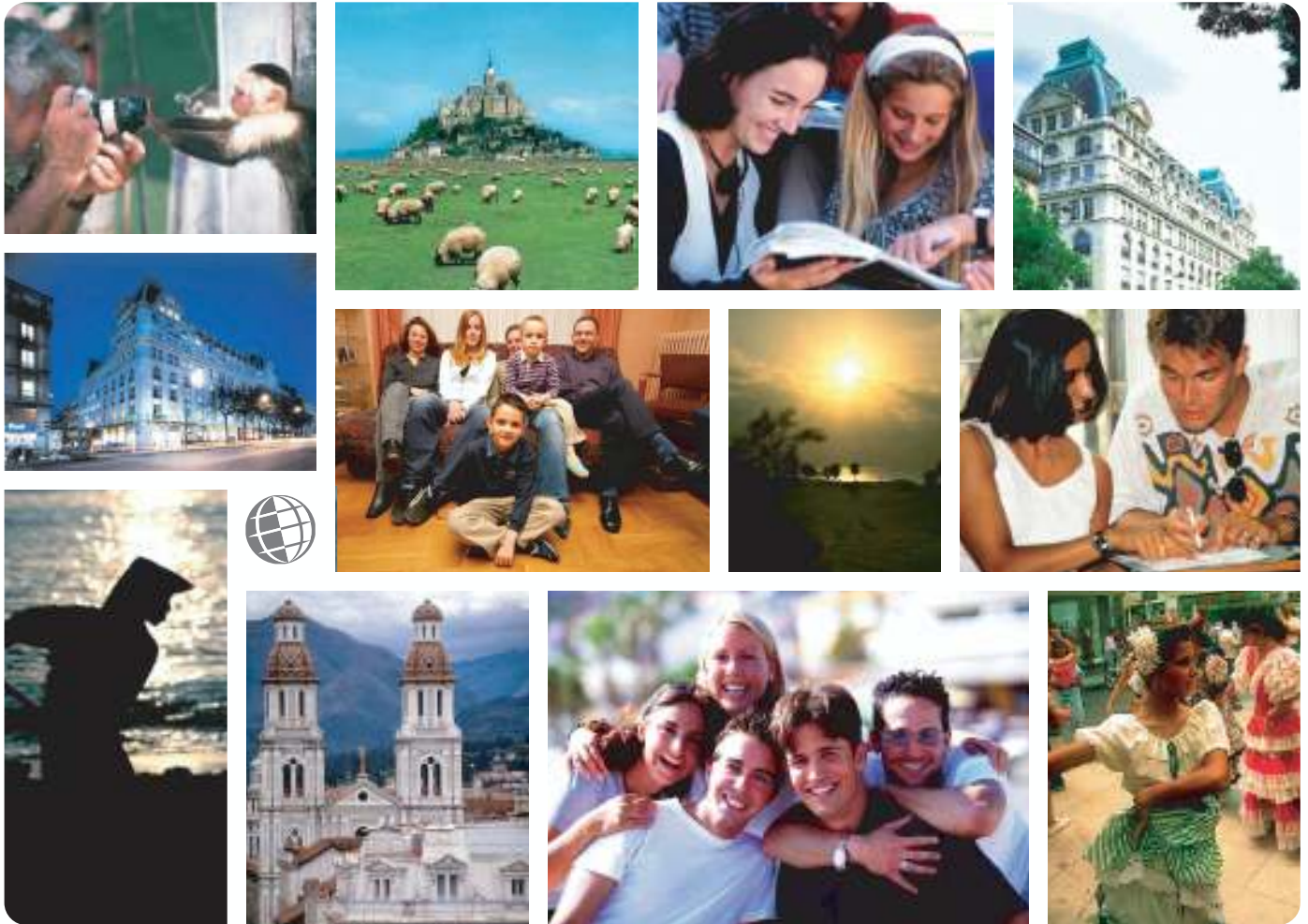


*Live the Language
Learn the Culture*

Foreign Language and Cultural Immersion Since 1968

NATIONAL REGISTRATION CENTER FOR STUDY ABROAD



Paraguay 2008-2009

For more information please visit: www.nrca.com

NRCSA is a proud member of:



National Registration Center for Study Abroad
PO Box 1393 Milwaukee, Wisconsin 53201 USA
Tel: (414) 278-0631 Email: study@nrca.com

National Registration Center for Study Abroad (NRCSA)

P.O. Box 1393, Milwaukee, WI 53201 USA. Tel. 414 278 0631 Fax. 414 271 8884



Learn the Culture  Live the Language  Since 1968

IDIOMAS DE PARAGUAY – ASUNCION, PARAGUAY

ABOUT THE SCHOOL & THE CITY

The NRCSA Center in Asuncion is dedicated to teaching Spanish and Guarani to foreigners. Student at the Center are taught using a "direct personalized" method. This method has proven to be a very reliable way for students to learn the language quickly. In the students individual or small group classes, students learn to use grammar correctly and to converse. The NRCSA Center is open year-round, and offers an environment that makes students feel at home.

Asuncion the capital and largest city in the country, is built on low hills above the east bank of the Río Paraguay. Though there are few colonial buildings remaining, one is Casa Viola, which is now a museum. Other sights include the Casa de Cultura Paraguaya, the 19th-century Cathedral and its museum, and the Casa de la Independencia, Asunción's oldest building dating 1772 and site of the declaration of independence. The city also boasts some very inviting parks, such as the Jardín Botánico.

ABOUT THE PROGRAM

Students are welcome to take professional and/or personal programs in Spanish and Guarani, the indigenous language of Paraguay. Each type of program is geared toward the needs of that group ensuring that each student understands and quickly learns the language.

Spanish Programs

Group 30 hours per week Students in the Spanish Group Program are placed in small groups of no more than 6 students. Classes are held for 6 hours per day, Monday through Friday, for a total of 30 hours per week.

Tutor 20 hours per week In the Spanish Tutor Program, the student is placed with an individual tutor for 4 hours per day, Monday through Friday, for a total of 20 hours per week.

Shared Tutor 20 hours per week The Shared Spanish Tutor Program allows two students traveling together and at the same language level to share a tutor. Classes are 4 hours per day, Monday through Friday, for a total of 20 hours per week.

Guarani Programs

Tutor 20 hours per week In the Guarani Tutor Program, the student is placed with an individual tutor for 4 hours per day, Monday through Friday, for a total of 20 hours per week.

Shared Tutor 20 hours per week The Shared Guarani Tutor Program allows two students traveling together and at the same language level to share a tutor. Classes are 4 hours per day, Monday through Friday, for a total of 20 hours per week.

ACCOMMODATIONS

The primary accommodation of students while studying is in homestays with Paraguayan families. This helps to enhance the students' learning experiences, because there is no better way to learn a language and a culture than through the daily interaction that comes with living with a local family.

Homestay accommodation includes a single room and 3 meals daily

SPECIAL ACTIVITIES

Students have the opportunity to participate in a variety of activities conducted by the local coordinators, an experience well worth the visit. Activities give you a chance to use the language, in fun, real life settings, but at the same time allow you to savor the richness of Paraguay by discovering its culture and living alongside its people.

You will also have an opportunity to get to know some of the hundreds of other students who have come from abroad and have formed bonds of friendship, by taking part in social and cultural activities together.

Arrival Information

Arrival transfer from the Asunción airport is available on request and at additional cost. Lodging information is sent 7-14 days prior to departure. Information of where to go and how to get there will be sent to students prior to departure.

TO REGISTER:

Complete the NRCSA Preregistration Form or contact the National Registration Center for Study Abroad at 823 North 2nd Street, P.O. Box 1393, Milwaukee, WI 53201 USA, or by calling (414) 278-0631; by Fax (414) 271-8884.

**Check out our website at <http://www.nrcca.com>
or e-mail us at study@nrcca.com**

Program & Admission Information - Asuncion, Paraguay

Programs
Spanish Programs
Guarani Programs

Programs

Students are welcome to take professional and/or personal programs in Spanish and Guarani, the indigenous language of Paraguay. Each type of program is geared toward the needs of that group ensuring that each student understands and quickly learns the language.

Students are tested before and after the course to determine their level of proficiency.

Classes are held Monday through Friday.



Spanish Programs

- Group 30 hours per week Students in the Spanish Group Program are placed in small groups of no more than 6 students. Classes are held for 6 hours per day, Monday through Friday, for a total of 30 hours per week.
- Tutor 20 hours per week In the Spanish Tutor Program, the student is placed with an individual tutor for 4 hours per day, Monday through Friday, for a total of 20 hours per week.
- Shared Tutor 20 hours per week The Shared Spanish Tutor Program allows two students traveling together and at the same language level to share a tutor. Classes are 4 hours per day, Monday through Friday, for a total of 20 hours per week.

Guarani Programs

- Tutor 20 hours per week In the Guarani Tutor Program, the student is placed with an individual tutor for 4 hours per day, Monday through Friday, for a total of 20 hours per week.
- Shared Tutor 20 hours per week The Shared Guarani Tutor Program allows two students traveling together and at the same language level to share a tutor. Classes are 4 hours per day, Monday through Friday, for a total of 20 hours per week.

Admissions & Academic Credit

Students age 18 years and older are welcomed regardless of educational background, occupation or nationality. No previous knowledge of Spanish or Guarani is required except where otherwise indicated.

Students desiring credit for their study should contact their home school or request the NRCSA Credit Fact Sheet. Generally, U.S. universities consider 15 hours of study to be equal to 1 semester credit.

For more information about academic credit in Spanish speaking countries, [please click here](#).

For general information on academic credit, [please click here](#).



Admissions &
Academic Credit

Activities
Activities

Comments

"I chose NRCSA because it was easily accessed and had a lot of different options as far as schools, programs, and locations. Also, I was able to arrange housing and work out the finer details in a simpler way (I believe) than would have been possible otherwise."

University Student,
McKinleyville, CA



ALL NRCSA PROGRAMS INCLUDE:

- ✓ Foreign language immersion classes
- ✓ Small interactive group and/or one-on-one instruction
- ✓ Culture program integrated into conversation classes, activities
- ✓ Meet-the-People interaction at school, homestays, & community events
- ✓ Orientation covering attractions, how to, health, safety, entertainment
- ✓ Academic assessments, placement-exit tests, Achievement Certificate
- ✓ Lodging (reduced fee if no lodging needed)
- ✓ Meals and/or cooking facilities at most centres
- ✓ Insurance: medical and accident - see below
- ✓ Emergency Hotline staffed 24 hours/day - see below
- ✓ Housing Coordinator familiar with area homestays, apartments, hotels
- ✓ Activity Coordinator facilitates transfers, cultural/social activities, tours
- ✓ Program Director experienced working with foreign participants
- ✓ Qualified, experienced, and certified educators
- ✓ Weekly proficiency goals and progress assessments
- ✓ Planning and Orientation materials
- ✓ International Ambiance, participants from around-the-world welcome
- ✓ Telecom assistance, web/e-mail access, usually on-site
- ✓ Local taxes for included services
- ✓ 24:7 Culture Immersion w/ native speakers: class, homestay, community
- ✓ **ALL NRCSA PROGRAMS INCLUDE the following INSURANCE***

ACCIDENT INSURANCE up to \$10,000 SICKNESS INSURANCE up to \$10,000

EMERGENCY MEDICAL EVACUATION up to \$25,000

EMERGENCY REUNION up to \$5,000

REPATRIATION up to \$7,500

LIFE INSURANCE \$5,000

plus

24 HOUR EMERGENCY WORLDWIDE MULTI-LINGUAL TELEPHONE ASSISTANCE

MANY ALSO OFFER

- ✓ **Tours:** cultural visits, day and weekend fieldtrips
- ✓ **Art:** classes/workshops, craft, dance, theater, fashion, music, photo
- ✓ **Humanities:** culture, area studies, hist, lit, gov't, educ, comm, plus...
- ✓ **Health:** golf, swimming, tennis, diving, skiing, riding, plus...
- ✓ **Special:** vocabulary classes tailored to your professional needs
- ✓ **Lodging:** homestay, apartment, dorm, hotel, special diet
- ✓ **Food:** home cooking, cooking classes, dine-around, wine tasting
- ✓ **Family:** services, daycare, child classes, community services
- ✓ **Teacher:** training, workshops, practicums, practice teaching, ECH
- ✓ **Teen:** camps and youth programs (including experiential)
- ✓ **University:** credit, undergraduate and graduate
- ✓ **Professional:** development credit in many fields, licensure, CEU
- ✓ **Volunteer:** medical, social service, ecology, teach plus...
- ✓ **Internships:** business, media, arts, eco, tourism, computer, plus...
- ✓ **Business:** classes, visits, networking, executive support services
- ✓ **Peer-to-Peer:** share interests, network by profession or hobby
- ✓ **Current Events & Professional Workshops, Holiday Courses**
- ✓ **Distance** educ liaison service, independent studies, research assist
- ✓ **Free** books and course materials. Return at end of studies
- ✓ **Free** airport transfers and internet access
- ✓ **Assessment** reports for attendance, progress, acculturation if needed
- ✓ **Medical:** professional training, law, social work, sciences etc.

** If you have a problem while studying abroad, call the 24 hour hotline! Call Any Time from Anywhere! Medical or travel emergencies, legal or medical or embassy referrals, lost passport or luggage, emergency message relay, coordinating emergency prescription replacement or cash transfer, emergency translations, 24-hour medical monitoring. Problems seldom occur, but when they do, it is nice to know insurance and worldwide assistance are included in your cost for study dates prepaid through NRCSA as reflected on your NRCSA confirmation. Additional optional insurance available upon request. Refer to the certificate for specific terms, conditions and other details regarding benefits, limitations, eligibility and exclusions of this plan. Questions? Contact NRCSA: Tel: 414-278-0631 ... E-Mail: info@nrcca.com ... Web: <http://www.nrcca.com>*

For Questions, Concerns, or Registration, Contact NRCSA
National Registration Center for Study Abroad * Box 1393, Milwaukee WI 53201 USA
Tel 414-278-0631 * Fax 414-271-8884* www.nrcca.com * info@nrcca.com
Since 1968 * Language-Culture Immersion Worldwide * Start Weekly * All Ages * Credit, CEU or Enrichment

