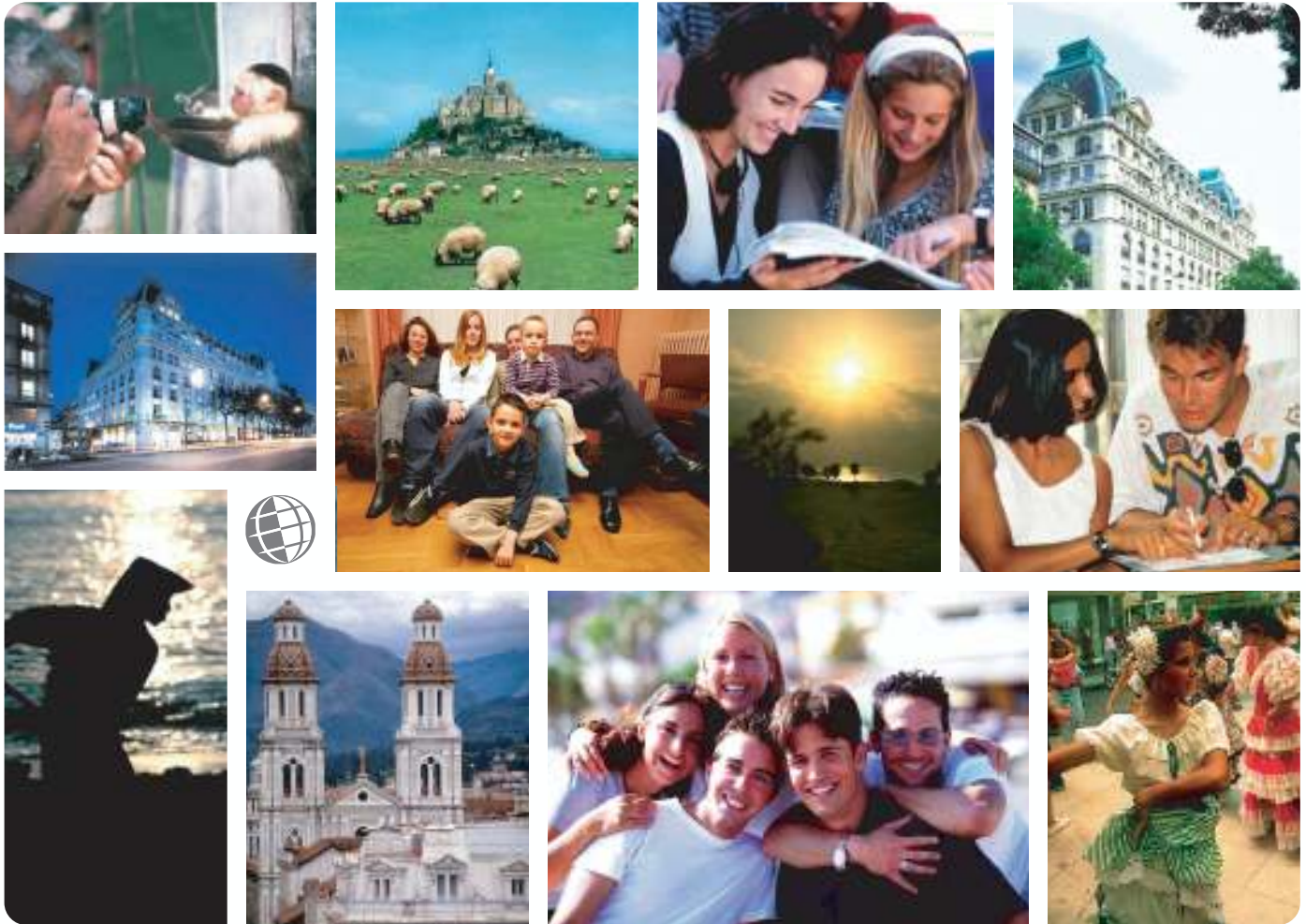


*Live the Language
Learn the Culture*

Foreign Language and Cultural Immersion Since 1968

NATIONAL REGISTRATION CENTER FOR STUDY ABROAD



Russian

For more information please visit: www.nrcsa.com

NRCSA is a proud member of:



National Registration Center for Study Abroad
PO Box 1393 Milwaukee, Wisconsin 53201 USA
Tel: (414) 278-0631 Email: study@nrcsa.com

National Registration Center for Study Abroad (NRCSA)

P.O. Box 1393, Milwaukee, WI 53201 USA. Tel. 414 278 0631 Fax. 414 271 8884



Learn the Culture  Live the Language  Since 1968

L&D LANGUAGE INSTITUTE – MOSCOW, RUSSIA

ABOUT THE SCHOOL AND THE CITY

Learn Russian in the heart of "Mother Russia". L&D Language Institute Moscow, in association with Moscow Linguistic University, offers courses in Language and Culture in Moscow. Classes are held at the University in a residential neighborhood located in the city centre, just minutes from the Moskva River and Gorky Park, and only 2 Metro stops from the Kremlin and Red Square.

All L&D Language Institute teachers are trained, qualified staff who specialize in language teaching and are teaching in their native language to adults. Classes are taught by a team of 2 or 3 teachers, one of whom has overall responsibility of course planning. The teachers will use student feedback in weekly and daily work plans taking account of the needs of the individuals in the class.

The University has high academic standards and experienced teachers make the study of Russian interesting and relevant to students' needs. Course participants will have the opportunity to learn Russian successfully and to gain insights into the society. Each course will include Russian language learning, topics related to Russian culture and contemporary life, visits to places of interest, and a full and varied social program.

The splendid palaces of the tzars, the world famous Red Square, majestic church towers and impressive underground stations; the hectic pace of modern life in Moscow unfolds against the backdrop of its glorious past. Day and night, the sheer diversity of life is simply fascinating, as are the people with their incomparable warmth and hospitality. The city of 10 million inhabitants is indeed the "Soul of Russia".

ABOUT THE PROGRAM

Group Course 20 lessons per week. Communicative teaching methods with small groups of maximum 8 students per class make this popular course a pleasurable and enriching experience for everyone participating. Group courses are offered from February to October with a minimum course length of 2 weeks.

The course syllabus is dynamic and follows a modular pattern made of 2 week units. For participants who stay 4 weeks or longer, the following units will build up on grammar basics of unit one, treating the same grammar topics from a different angle with more in-depth explanations, with a more complex vocabulary, different exercises, more dialogues and role-play in class.

The small group size of maximum 8 students per group combined with a sizable amount of homework is intended to make an impact right from the beginning. The feeling of success will help to maintain a high level of motivation which in turn is essential for the necessary discipline.

Common lectures in addition to the 20 weekly lessons of language teaching held twice a week covering a number of subjects including but not limited: History of St. Petersburg, History of Moscow, Russian Economy, Current Politics

Intensive Group Course comprises 25 lessons per week in groups with maximum ten participants. The morning lessons (20) are taken together with the students, which have booked our Standard Group Course. The afternoon supplement (5 lessons on two days – usually Tuesday and Thursday)

* A1 – Beginner, * A1+/A2 – Elementary,
* B1 – Intermediate * B2 – Upper-intermediate

Professional Tutor Course 20 lessons per week. The one-to-one Professional Tutor Course is individually structured for each student and is designed primarily for executives, government officials, professionals, interpreters and future Russia/CIS representatives. The individual approach speeds up the learning process and focuses on the needs of the particular client without having to compromise on, or take into consideration, other students.

ACCOMMODATIONS

Homestay

Host Families offering a warm welcome and home cooking are located about 30 to 50 minutes from the university by metro. A single room and 2 meals daily is included.

Student Residence

The residence is located about 5 minutes walking distance from the university buildings. This is a modern block with single rooms arranged in pairs, each 2-room unit with a separate bathroom and toilet. Couples may have a unit for themselves. 2 meals daily in the student canteen is included.

SPECIAL ACTIVITIES

Excursions, Cultural & Social Activities

In addition to the afternoon lectures and guided tours, L&D Language Institute Moscow also offers a social program that includes attending concerts, going to the famed Russian circus and, of course, the ballet. Russian singing classes and attending poetry readings are also part of the program. Excursions to other cities of interest, such as St. Petersburg and Zagorsk, are available at additional cost.

TO REGISTER:

Complete the NRCSA Preregistration Form or contact the National Registration Center for Study Abroad at 823 North 2nd Street, P.O. Box 1393, Milwaukee, WI 53201 USA, or by calling (414) 278-0631; by Fax (414) 271-8884.

Check out our website at <http://www.nrca.com>
or e-mail us at study@nrca.com

ALL NRCSA PROGRAMS INCLUDE:

- ✓ Foreign language immersion classes
- ✓ Small interactive group and/or one-on-one instruction
- ✓ Culture program integrated into conversation classes, activities
- ✓ Meet-the-People interaction at school, homestays, & community events
- ✓ Orientation covering attractions, how to, health, safety, entertainment
- ✓ Academic assessments, placement-exit tests, Achievement Certificate
- ✓ Lodging (reduced fee if no lodging needed)
- ✓ Meals and/or cooking facilities at most centres
- ✓ Insurance: medical and accident - see below
- ✓ Emergency Hotline staffed 24 hours/day - see below
- ✓ Housing Coordinator familiar with area homestays, apartments, hotels
- ✓ Activity Coordinator facilitates transfers, cultural/social activities, tours
- ✓ Program Director experienced working with foreign participants
- ✓ Qualified, experienced, and certified educators
- ✓ Weekly proficiency goals and progress assessments
- ✓ Planning and Orientation materials
- ✓ International Ambiance, participants from around-the-world welcome
- ✓ Telecom assistance, web/e-mail access, usually on-site
- ✓ Local taxes for included services
- ✓ 24:7 Culture Immersion w/ native speakers: class, homestay, community
- ✓ **ALL NRCSA PROGRAMS INCLUDE the following INSURANCE***

ACCIDENT INSURANCE up to \$10,000 SICKNESS INSURANCE up to \$10,000

EMERGENCY MEDICAL EVACUATION up to \$25,000

EMERGENCY REUNION up to \$5,000

REPATRIATION up to \$7,500

LIFE INSURANCE \$5,000

plus

24 HOUR EMERGENCY WORLDWIDE MULTI-LINGUAL TELEPHONE ASSISTANCE

MANY ALSO OFFER

- ✓ **Tours:** cultural visits, day and weekend fieldtrips
- ✓ **Art:** classes/workshops, craft, dance, theater, fashion, music, photo
- ✓ **Humanities:** culture, area studies, hist, lit, gov't, educ, comm, plus...
- ✓ **Health:** golf, swimming, tennis, diving, skiing, riding, plus...
- ✓ **Special:** vocabulary classes tailored to your professional needs
- ✓ **Lodging:** homestay, apartment, dorm, hotel, special diet
- ✓ **Food:** home cooking, cooking classes, dine-around, wine tasting
- ✓ **Family:** services, daycare, child classes, community services
- ✓ **Teacher:** training, workshops, practicums, practice teaching, ECH
- ✓ **Teen:** camps and youth programs (including experiential)
- ✓ **University:** credit, undergraduate and graduate
- ✓ **Professional:** development credit in many fields, licensure, CEU
- ✓ **Volunteer:** medical, social service, ecology, teach plus...
- ✓ **Internships:** business, media, arts, eco, tourism, computer, plus...
- ✓ **Business:** classes, visits, networking, executive support services
- ✓ **Peer-to-Peer:** share interests, network by profession or hobby
- ✓ **Current Events** & Professional Workshops, Holiday Courses
- ✓ **Distance** educ liaison service, independent studies, research assist
- ✓ **Free** books and course materials. Return at end of studies
- ✓ **Free** airport transfers and internet access
- ✓ **Assessment** reports for attendance, progress, acculturation if needed
- ✓ **Medical:** professional training, law, social work, sciences etc.

* If you have a problem while studying abroad, call the 24 hour hotline! Call Any Time from Anywhere! Medical or travel emergencies, legal or medical or embassy referrals, lost passport or luggage, emergency message relay, coordinating emergency prescription replacement or cash transfer, emergency translations, 24-hour medical monitoring. Problems seldom occur, but when they do, it is nice to know insurance and worldwide assistance are included in your cost for study dates prepaid through NRCSA as reflected on your NRCSA confirmation. Additional optional insurance available upon request. Refer to the certificate for specific terms, conditions and other details regarding benefits, limitations, eligibility and exclusions of this plan. Questions? Contact NRCSA: Tel: 414-278-0631 ... E-Mail: info@nrcca.com ... Web: <http://www.nrcca.com>

For Questions, Concerns, or Registration, Contact NRCSA
National Registration Center for Study Abroad * Box 1393, Milwaukee WI 53201 USA
Tel 414-278-0631 * Fax 414-271-8884 * www.nrcca.com * info@nrcca.com
Since 1968 * Language-Culture Immersion Worldwide * Start Weekly * All Ages * Credit, CEU or Enrichment