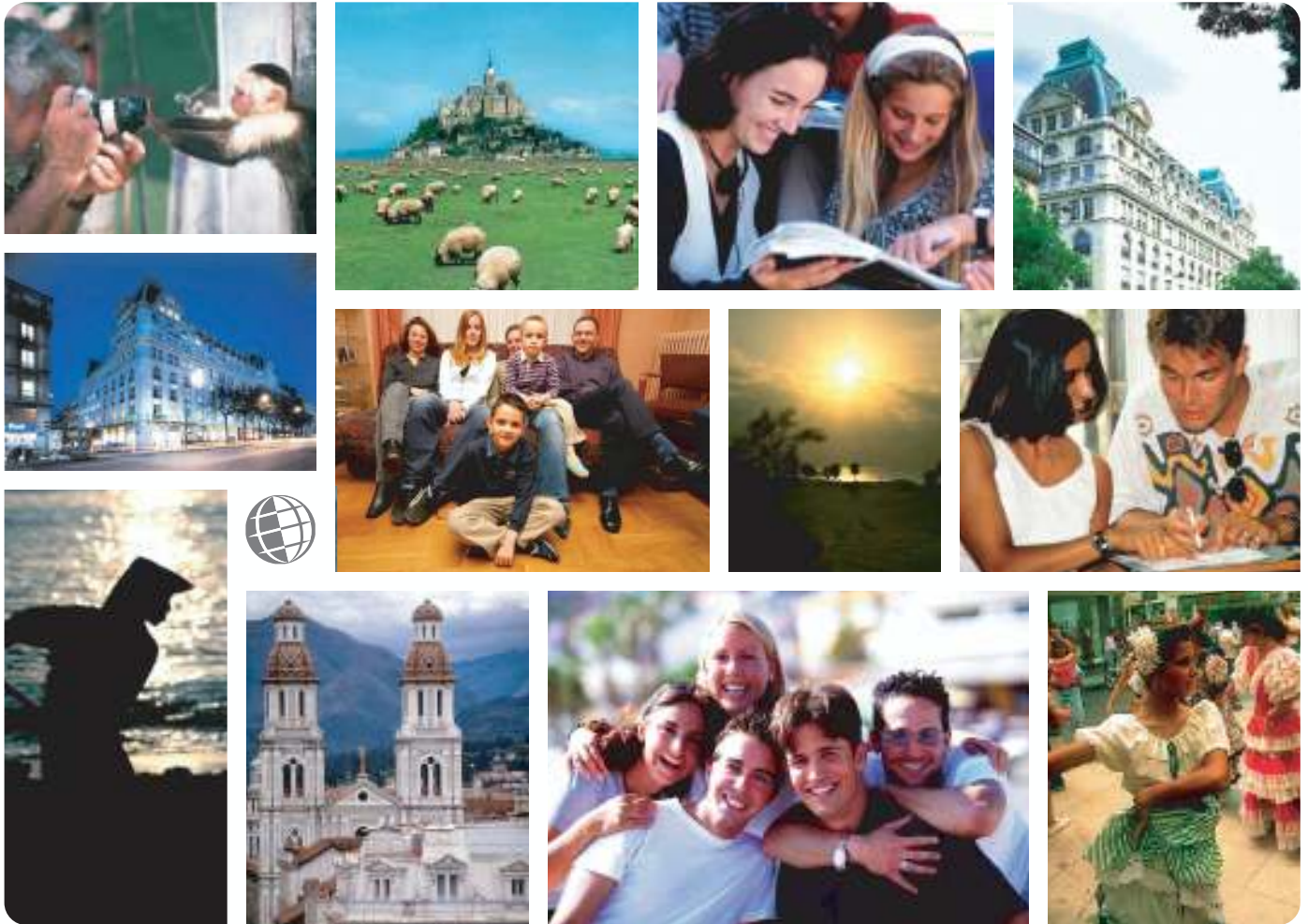


*Live the Language  
Learn the Culture*

Foreign Language and Cultural Immersion Since 1968  
**NATIONAL REGISTRATION CENTER  
FOR STUDY ABROAD**



# Spain 2008-2009

For more information please visit: [www.nrca.com](http://www.nrca.com)

NRCSA is a proud member of:



**National Registration Center for Study Abroad**  
PO Box 1393 Milwaukee, Wisconsin 53201 USA  
Tel: (414) 278-0631 Email: [study@nrca.com](mailto:study@nrca.com)

# National Registration Center for Study Abroad (NRCSA)

P.O. Box 1393, Milwaukee, WI 53201 USA. Tel. 414 278 0631 Fax. 414 271 8884



Learn the Culture  Live the Language  Since 1968

## COLEGIO MARAVILLAS – BENALMADENA, SPAIN

### ABOUT THE SCHOOL AND THE CITY

Colegio Maravillas was founded in 1976 as a private Spanish school. Only a few years later, in 1978, the Language School was opened in an independent building, only 50 meters from the main school. The building is modern with 12 large, bright classrooms, all with air-conditioning and audiovisual facilities. There is also a library, a video room, a dining room and cafeteria, and sports grounds. Students also have access to e-mail and the internet. Colegio teaches foreign languages to Spaniards as well, hence students are generally interested in conversational exchange.

**Benalmadena** is a small town with approximately 30,000 inhabitants. It sits on a hill at the foot of the Mijas mountain range in the Malaga province. Originally a sleepy Andalusian fishing village with beautiful white washed houses, Benalmadena has developed into a small but lively town which retains its old charm and character. The town is small enough to provide a peaceful and secure environment, while large enough to offer good shops, restaurants, an open-air cinema, etc. It offers cultural richness and close proximity to other fascinating cities.

### ABOUT THE PROGRAM

Spanish conversation and discussing techniques are based on real life situations and will develop skills of oral comprehension, idiomatic usage and fluency. The material used in the courses are comprised of recognized publications for foreign language learning with the additional use of an audio/visual system and supplementary material prepared by Colegio Maravillas' staff. All courses consist of 60 minute classes and take place Monday through Friday. There are 3 levels: beginners, intermediate and advanced. Maximum number of 11 students per group.

**Intensive Course** Group 20 hours per week. Classes are held from 9.30 to 11.30 and 12.00 to 14:00 (2:00PM) daily. Classes concentrate on grammatical structure, speaking and understanding everyday Spanish, and pronunciation. Intermediate and advanced students will focus on comprehension, communication, creative writing, idiomatic expressions, and presentation of role-playing.

**Combination Course** Group/Tutor 25 hours per week - 20 Group + 5 Tutor. This is a combination of the Intensive Course of 20 hours per week and 5 private lessons in the afternoon per week. This option offers the student an opportunity to work on specific language problem areas adapting the content to meet his/her needs.

**Teen Summer Program:** Ages 14 - 17. Group 15 hours per week Spanish, 2 excursions per week + evening activities. The Teen Program combines formal classroom work with a varied program of leisure activities. All levels are taught, from beginner to advanced, and formal classes are held in the morning consisting

of 15 hours per week in small groups. At the end of the course, every student will receive a Colegio Course Completion Certificate. Colegio is considered one of the leading youth organizations in the south of Spain and is a member of FIYTO (Federation of International Youth Travel Organization).

### The activity program includes:

- \* Afternoon sports activities at the Municipal Sport Center or on the beach: tennis, volleyball, basketball, swimming, etc.
- \* Local visit to Malaga, Marbella, Mijas, Nerja, etc.
- \* Full-day excursion on Saturdays to Rhonda, Granada or Sevilla.
- \* Evening activities: bowling, video sessions, disco parties, etc.

**Accommodation** is provided in a homestay that has been carefully selected by Colegio Maravillas. Each student shares a room with another student of similar age but of different nationality. Homestays provide breakfast and dinner, with lunch provided in the dining room at the school. Weekends, all 3 meals are provided by the host family.

### ACCOMMODATIONS

Homestays Staying with a host family offers an excellent opportunity to get to know the Spanish lifestyle. Most host families live within walking distance of the school, while others live about 10 to 15 minutes away traveling by train or bus. Families are carefully selected and accommodation in either a single or double room with breakfast or 2 meals daily.

**Aparthotels** Apartments are situated in a complex located 10 minutes walking distance from the school. These single or double room mini-apartments are furnished and each has a fully equipped kitchen, bathroom, terrace, and telephone. A cleaning service, 24 hour reception, bed linens and a swimming pool are provided. Students receive vouchers for breakfast daily at a cafeteria.

Hotels are available upon request and is at additional cost.

### SPECIAL ACTIVITIES

Periodically, optional excursions are organized, accompanied and guided by the Art professor. Excursions may be to Granada, Cordoba, Seville, Ronda and Morocco. Besides the activities included in the program, the student will be able to visit several museums, attend conferences, film and flamenco recitals.

### TO REGISTER:

Complete the NRCSA Preregistration Form or contact the National Registration Center for Study Abroad at 823 North 2nd Street, P.O. Box 1393, Milwaukee, WI 53201 USA, or by calling (414) 278-0631; by Fax (414) 271-8884.

Check out our website at <http://www.nrca.com>  
or e-mail us at [study@nrca.com](mailto:study@nrca.com)

## Programs & Activities - Benalmadena, Spain

### Programs

**The Programs** Spanish conversation and discussion techniques are based on real life situations and will develop skills of oral comprehension, idiomatic usage and fluency. The material used in the courses are comprised of recognized publications for foreign language learning with the additional use of an audio/visual system and supplementary material prepared by the school's skilled staff.



All courses consists of 60 minute classes and take place Monday through Friday. There are 3 levels: Beginner, Intermediate and Advanced. A placement exam is given at the start of the course. There is a maximum of 11 students per group, with an average of 5 - 8. An Attendance Diploma is given after a final examination. Classes are not held on National and Regional Holidays, including Easter Week and December 22 through January 6th. No makeup will be scheduled for classes lost during holidays.



**Intensive Course** Group 20 hours per week. Classes are held from 9:30 to 11:30 and 12:00 to 14:00 daily. Classes concentrate on grammatical structure, speaking and understanding everyday Spanish, and pronunciation. Intermediate and advanced students will focus on comprehension, communication, creative writing, idiomatic expressions, and presentations of role-playing activities.

**Combination Course** Group/Tutor 25 hours per week: 20 Group + 5 Tutor. This is a combination of the Intensive Course of 20 hours per week and 5 private lessons in the afternoon per week. This option offers the student an opportunity to work on specific language problem areas adapting the content to meet his/her needs.

#### **Easter Teen Program:**

For Ages: 14 - 17. Absolute Beginner to Intermediate Spanish.

[View more information about the Easter Teen Program.](#)

#### **Teen Summer Program**

For ages 14 - 17. Absolute Beginner to Intermediate Spanish

[View more information about the Summer Teen Program.](#)

### Admissions & Academic Credit

Students age 17 years and older are welcomed regardless of educational background, occupation or nationality. Students enrolled in the Easter or Summer Teen Programs must be between the ages of 14 and 17. No previous knowledge of Spanish is required except where otherwise indicated.

Students desiring credit for their study should contact their home school or request the NRCSA Credit Fact Sheet. Generally, U.S. schools consider 15 hours of study to be equal to 1 semester credit. Students interested in credit will be required to write an assessment test and an Attendance Diploma will be given at the end of the course.

For more information about academic credit in Spanish speaking countries, [please click here](#).

For general information on academic credit, [please click here](#).

### Certificates & Exams

The school offers a preparation course for the DELE Exam of Instituto Cervantes in April and October. This course is at additional cost.

### Programs

Intensive Course  
Combination Course  
Teen Program

Admissions &  
Academic Credit  
Certificates & Exams

### Activities

Cultural, Social &  
Sporting Activities

### Comments

*"I enjoyed the school, and most of all the location. I found the teachers very helpful and friendly. The facility was kept immaculate."*

Receptionist, Vancouver, BC,  
CANADA

*"I was really happy with the experience overall. I made many new friends - all from other countries. I am looking forward to doing this again soon."*

University Student, San  
Carlos, CA

*"I thoroughly enjoyed the entire experience. The familia was incredible! The setting was beautiful and I loved the school and staff!"*

Grad Student, La Habra  
Heights, CA

# ALL NRCSA PROGRAMS INCLUDE:

- ✓ Foreign language immersion classes
- ✓ Small interactive group and/or one-on-one instruction
- ✓ Culture program integrated into conversation classes, activities
- ✓ Meet-the-People interaction at school, homestays, & community events
- ✓ Orientation covering attractions, how to, health, safety, entertainment
- ✓ Academic assessments, placement-exit tests, Achievement Certificate
- ✓ Lodging (reduced fee if no lodging needed)
- ✓ Meals and/or cooking facilities at most centres
- ✓ Insurance: medical and accident - see below
- ✓ Emergency Hotline staffed 24 hours/day - see below
- ✓ Housing Coordinator familiar with area homestays, apartments, hotels
- ✓ Activity Coordinator facilitates transfers, cultural/social activities, tours
- ✓ Program Director experienced working with foreign participants
- ✓ Qualified, experienced, and certified educators
- ✓ Weekly proficiency goals and progress assessments
- ✓ Planning and Orientation materials
- ✓ International Ambiance, participants from around-the-world welcome
- ✓ Telecom assistance, web/e-mail access, usually on-site
- ✓ Local taxes for included services
- ✓ 24:7 Culture Immersion w/ native speakers: class, homestay, community
- ✓ **ALL NRCSA PROGRAMS INCLUDE the following INSURANCE\***

ACCIDENT INSURANCE up to \$10,000    SICKNESS INSURANCE up to \$10,000

EMERGENCY MEDICAL EVACUATION up to \$25,000

EMERGENCY REUNION up to \$5,000

REPATRIATION up to \$7,500

LIFE INSURANCE \$5,000

plus

24 HOUR EMERGENCY WORLDWIDE MULTI-LINGUAL TELEPHONE ASSISTANCE

## MANY ALSO OFFER

- ✓ **Tours:** cultural visits, day and weekend fieldtrips
- ✓ **Art:** classes/workshops, craft, dance, theater, fashion, music, photo
- ✓ **Humanities:** culture, area studies, hist, lit, gov't, educ, comm, plus...
- ✓ **Health:** golf, swimming, tennis, diving, skiing, riding, plus...
- ✓ **Special:** vocabulary classes tailored to your professional needs
- ✓ **Lodging:** homestay, apartment, dorm, hotel, special diet
- ✓ **Food:** home cooking, cooking classes, dine-around, wine tasting
- ✓ **Family:** services, daycare, child classes, community services
- ✓ **Teacher:** training, workshops, practicums, practice teaching, ECH
- ✓ **Teen:** camps and youth programs (including experiential)
- ✓ **University:** credit, undergraduate and graduate
- ✓ **Professional:** development credit in many fields, licensure, CEU
- ✓ **Volunteer:** medical, social service, ecology, teach plus...
- ✓ **Internships:** business, media, arts, eco, tourism, computer, plus...
- ✓ **Business:** classes, visits, networking, executive support services
- ✓ **Peer-to-Peer:** share interests, network by profession or hobby
- ✓ **Current Events & Professional Workshops, Holiday Courses**
- ✓ **Distance** educ liaison service, independent studies, research assist
- ✓ **Free** books and course materials. Return at end of studies
- ✓ **Free** airport transfers and internet access
- ✓ **Assessment** reports for attendance, progress, acculturation if needed
- ✓ **Medical:** professional training, law, social work, sciences etc.

*\* If you have a problem while studying abroad, call the 24 hour hotline! Call Any Time from Anywhere! Medical or travel emergencies, legal or medical or embassy referrals, lost passport or luggage, emergency message relay, coordinating emergency prescription replacement or cash transfer, emergency translations, 24-hour medical monitoring. Problems seldom occur, but when they do, it is nice to know insurance and worldwide assistance are included in your cost for study dates prepaid through NRCSA as reflected on your NRCSA confirmation. Additional optional insurance available upon request. Refer to the certificate for specific terms, conditions and other details regarding benefits, limitations, eligibility and exclusions of this plan. Questions? Contact NRCSA: Tel: 414-278-0631 ... E-Mail: info@nrcca.com ... Web: <http://www.nrcca.com>*

For Questions, Concerns, or Registration, Contact NRCSA  
National Registration Center for Study Abroad \* Box 1393, Milwaukee WI 53201 USA  
Tel 414-278-0631 \* Fax 414-271-8884\* [www.nrcca.com](http://www.nrcca.com) \* [info@nrcca.com](mailto:info@nrcca.com)  
Since 1968 \* Language-Culture Immersion Worldwide \* Start Weekly \* All Ages \* Credit, CEU or Enrichment

# PREREGISTRATION FORM – NRCSA PROGRAMS

1. Complete & send to NRCSA, P.O. Box 1393, Milwaukee, WI 53201, USA • Tel. (414) 278-0631 • Fax (414) 271-8884 • Web: www.nrcca.com
2. Enclose a non-refundable deposit/registration fee of \$140 per person, per program, payable to NRCSA (\$40 registration fee & \$100 program deposit applied towards the program costs).
3. Register early. Add \$40 per person late enrollment fee if paying in full within 40 days of departure. Within 20 days, payments by certified check.
4. Credit Cards may be used for deposits (see "H" below). NRCSA street address for overnight deliveries is 207 East Buffalo Street, Suite 610, Milwaukee, WI 53202 USA. You are welcome to photocopy this form. Please send separate form for each school if taking multiple programs.

**A. Name(s)** \_\_\_\_\_ Sex \_\_\_\_\_ Birthdate \_\_\_\_\_ Citizenship \_\_\_\_\_  
Please print  
 \_\_\_\_\_ Employer \_\_\_\_\_ Occupation \_\_\_\_\_  
If student, school attending and year

Street: \_\_\_\_\_ Tel. Home: \_\_\_\_\_  
Street address (not P.O. Box) where someone can sign for documents sent to you.  
 City/State/Zip: \_\_\_\_\_ Tel. Work: \_\_\_\_\_  
 Fax: \_\_\_\_\_  
 E-mail: \_\_\_\_\_

In Emergency, notify: \_\_\_\_\_  
(Name, Address, Phone)

**B. BACKGROUND:** \_\_\_\_\_  
Describe your background in the course you're taking abroad. Check your ability level:  
 Beginner  Post Beginner  
 Intermediate  Advanced

**C. LODGING:** \_\_\_\_\_  
Schools will try (cannot guarantee) to meet them. Special Diet (may be available) at additional cost.

**D. GOALS:** \_\_\_\_\_

**E. INSURANCE:** Includes prepaid study dates. To extend coverage up to 30 days before/after study dates, add \$5/day or \$19/week and advise dates.

**Check Preferences.**

- Single  Share Twin  Other: \_\_\_\_\_  
 Yes Smoking  No Smoking  Either  
 Yes Pets  No Pets  Either  
 Yes Children  No Children  Either

- PREFER:**  Homestay Involvement  Freedom to Come/Go  
**ARE YOU?**  Quiet  Outgoing  Frequent Traveler  
**OBJECTIVES:**  Enrichment  Academic Credit  Job Related  
**HOBBIES:**  Reading  Music  Cooking  Jogging  Sports

|  |   |
|--|---|
| <b>F. PROGRAM INFORMATION</b>  | School/Center                               |
| Program Name (use title from Dates & Fees)                                   | City/Country                                |
| Date: Start Program  | Date: Start Lodging (most start day before) |
| No. of hours day/week  | No. of weeks attending                      |
| Disabilities/Allergies/Health Problems                                       | 2nd Choice Program                          |
| How did you learn about NRCSA?   | Social Security Number                      |
| Options (see program for choices)  |   |
| <b>Your Signature</b> (if you are under age 18, both parents must also sign) |   |

**INSURANCE INCLUDED for PRE-PAID STUDY DATES**

**ACCIDENT / MEDICAL INSURANCE UP TO \$10,000**

**EMERGENCY MEDICAL EVACUATION UP TO \$25,000**

**EMERGENCY REUNION UP TO \$5,000**

**REPATRIATION UP TO \$7,500**

**LIFE INSURANCE \$5,000**

**24 HOUR EMERGENCY WORLDWIDE-MULTI-LINGUAL TELEPHONE ASSISTANCE**

For More Info: <http://www.nrcca.com/INS24hrHotline.html>

**H. CREDIT CARDS:**

For program deposit only (**not final payment**) check:  
 VISA  Mastercard  American Express Amount Charged \$ \_\_\_\_\_

\_\_\_\_\_  
Card Number (13 or more numbers) Exp Date

\_\_\_\_\_  
SIGNATURE (as on card) PRINT name (as on card)

**CHANGE FEES** of at least \$35 apply for each change you make. Some "changes" may result in cancellation fees.

**CANCELLATIONS** are effective the day received in writing by NRCSA in Milwaukee. All payments less \$140 per program fully refundable up to 60 days prior to departure. For cancellations within 60 days of departure, \$250 per person is not refundable; within 40 days of departure, less 50% of program cost or \$300 per person (whichever is greater); within 14 days of departure, 100% of program cost is non refundable. Airline cancellation penalties, if any, are in addition to those outlined above. Cancellation penalties are per person, per program. Medical, baggage (above that included) and cancellation insurance is strongly recommended. Attach a note if you have a medical condition or Rx which the school/center should know about.

**CONDITIONS:** Each institution listed herein is independent of the National Registration Center for Study Abroad (hereinafter referred to as NRCSA, controls, and will periodically make changes in the program. Classes may fill, be changed, or dropped by the sponsoring academic institutions. NRCSA is a division of Mibar Ltd. and is not responsible for these changes or other actions beyond its control such as strikes, postal delays or loss, mechanical breakdowns, weather, government actions, delay or acts/omissions of suppliers. NRCSA may make changes or substitutions or cancel any program. In the event of entire program cancellation by NRCSA, liability is limited to refunding all monies paid to NRCSA for said program. Passengers electing not to use portions of a program shall not be entitled to a refund. No agent or representative of NRCSA shall have the right to alter the provisions listed herein. Costs based on tariffs and exchange rates effective the date of printing of this material, and are subject to change. Additional costs resulting from such change will be paid by the participant. Registrations are valid when accepted by NRCSA in Milwaukee. The passage contract used by the airline, when issued, is the sole agreement between it and you. Photographs of or statements by participants may be used by NRCSA. NRCSA, group leaders or foreign coordinators, at their discretion, may get medical assistance for participants, or place them in a hospital, or fly them back to the U.S. for medical treatment. All costs related to medical treatment or evacuation will be paid by the participant. As visitors you are expected to adhere to foreign rules and customs. If the foreign staff feels you are not adhering to these rules and customs, your participation in the program shall terminate immediately without refund whatsoever. A "homestay" is defined as living with a local person(s) in the foreign country and may not be multi generational, multinational, etc. It is the responsibility of the participant to have required proof of citizenship and visa(s) if applicable - check with the consulate of the country(s) you will be visiting.

**INFORMATION USE:** Information provided to NRCSA will be shared with participating organizations to facilitate your registration.

**NOTE:** Classes canceled in honor of local holidays are not made up. Foreign Language schools use placement tests. If there is no group at your level, smaller group or tutor classes may be substituted with fewer hours per week. Classes are conducted entirely in the target language. See **Fast Facts Guide** for more information.