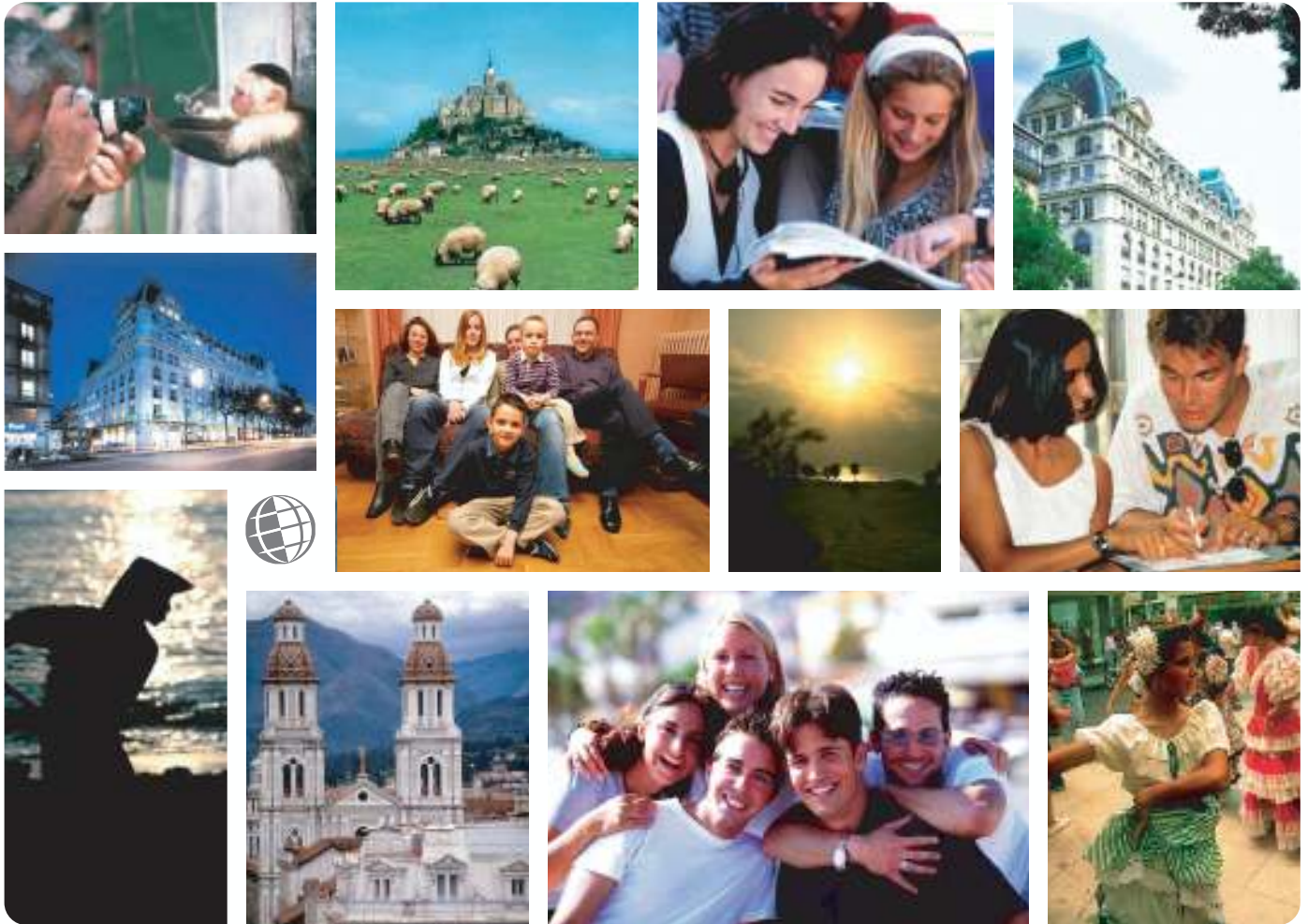


*Live the Language  
Learn the Culture*

Foreign Language and Cultural Immersion Since 1968  
**NATIONAL REGISTRATION CENTER  
FOR STUDY ABROAD**



# Spain 2008-2009

For more information please visit: [www.nrca.com](http://www.nrca.com)

NRCSA is a proud member of:



**National Registration Center for Study Abroad**  
PO Box 1393 Milwaukee, Wisconsin 53201 USA  
Tel: (414) 278-0631 Email: [study@nrca.com](mailto:study@nrca.com)

# National Registration Center for Study Abroad (NRCSA)

P.O. Box 1393, Milwaukee, WI 53201 USA. Tel. 414 278 0631 Fax. 414 271 8884



Learn the Culture  Live the Language  Since 1968

## CITY AND SCHOOL INFORMATION – MALAGA, SPAIN

**Instituto de Malaga** is an exciting teaching center that combines the highest academic performance with a most pleasant atmosphere. The intensive studies, the special pupil-teacher rapport, the frequent parties and various other out-of-school activities, all concur to make stay for an unforgettable experience. Founded over 25 years ago, Instituto de Malaga is widely recognized to be one of the best language schools in Spain.

**Malaga** is the capital of the Costa del Sol, with a population of about 450,000. Its situation, first-class tourist attractions, constant blue sky and Mediterranean Sea, warm hospitality, folklore, mild climate and wide variety of night sports and restaurants make Malaga an ideal setting for spending your time learning Spanish and enjoying yourself.

### ABOUT THE PROGRAM

**Intensive Group** 20 hours per week. Minimum Age 16.

The school's Intensive is the standard general Spanish programs with a maximum of 10 students per class. The Intensive Program includes 4 lessons per day, while the Special Intensive Program consists of 6 lessons per day. Both programs are offered at all levels from total beginner to advanced and cover all aspects of the Spanish language.

**Super Intensive Mini-Group** 30 hrs/wk This program consists of 6 lessons per day and like the Intensive Group Program, is offered at all levels from total beginner to advanced and covers all aspects of the Spanish language. 6 Students per class.

The programs have been carefully designed to provide an intensive, progressive course, with a good balance between the various skills and continual reinforcement of the new points introduced each day. Each day's class work is further reinforced by an average of 1 - 2 hours integrated homework.

The programs are offered in progressive 4-week units. The minimum duration is 2 weeks and longer stay students will normally complete the entire program in 20-24 weeks. Those staying for only 2 weeks receive half a 4-week Unit.

**One-to-One Tutor Program** Minimum Age 18

The frequently preferred option for the highly demanding business or professional person. The program is based around the course books but the supplementary materials are adapted to the client's individual needs. In addition, the school can adapt the style of teaching to the individual student's preferred method of learning. As a result of tailoring the course to meet the needs of the student, progress can at times be startling fast.

Class times can be scheduled to the student's needs or wishes. Please indicated on the NRCSA Preregistration Form what time

schedule you would like. Students may also request an examination at the end of the course if desired.

**DELE Exam Preparation Course** 4 week program is designed specifically to prepare students for the DELE exam administered by the Instituto Cervantes. The exam dates for 2004 are May 14 and Nov 12. The April DELE Exam Preparation Course will be completed two weeks before the May exam date. Exam preparation course price does not include DELE exam fees.

**Executive Mini-Group Program** Mini-Group 30 hours per week. Minimum Age 18. Total beginner to advanced levels accepted. This is a highly intensive course in 2 week units designed for business executives, professionals and other highly motivated people who need to make rapid progress in a short time. As the Mini-Group program aims to progress very rapidly, participants will need to dedicate a lot of time and effort outside the lesson hours to practice and consolidate the work introduced in class. Actual progress will, of course, depend on the linguistic aptitudes of the participants. With an average of 4 in a class (max. 6) each participant receives a high degree of personal attention and gets plenty of opportunity to speak. Furthermore, the supplementary materials used in the more communicative sessions can take into account the individual needs and interests of the group members. Class times are 08.30 to 14.30 (subject to variation).

**Spanish for International Trade & Commerce**

This is a specialized course of 4 weeks 4 lessons per day in Intensive Group format. You need to have an advanced level of Spanish to join this course. This course combines the study of advanced Spanish with the teaching of concepts and customs of commerce in Spain: e.g. Import/export procedures, banking infrastructure, the Media, marketing, business correspondence, etc at the 5th and 6th hours.

**Spanish Hispanic Studies Program** Group 20 hours per week.

Minimum Age 18. This program is intended for students who want to attain a high level of Spanish and learn about the civilization and culture of Andalucía and Spain. Students completing the program may also prepare for the University Entrance Examinations for Overseas students: "Selectividad para Extranjeros".

The program is divided into 2 terms. Students may choose to take either one term or both.:

**1. Term I (16 Weeks):** Starting in August or September each year, this is an Intensive course of General Spanish from the Beginner level (A1) through Advanced level (C2). Students may join the course at 4 week modules according to their level. Aim: To prepare students for Term II by covering levels A, B and C at a slightly slower pace and in greater depth than in the standard Intensive Program.

# National Registration Center for Study Abroad (NRCSA)

P.O. Box 1393, Milwaukee, WI 53201 USA. Tel. 414 278 0631 Fax. 414 271 8884



Learn the Culture  Live the Language  Since 1968

**2. Term II (20 Weeks):** Starting in January each year this course combines Advanced Spanish from Superior 1 level (D1) through Master 2 level (E2) and aspects of Spanish culture and civilization. The latter is taught at pre-University level. Students may join the course in 4 week modules according to their level. Aims: To cover levels D and E and prepare students for the DELE Básico, provide students with an overview of Spanish civilization and culture and, for those who want, a preparation for the "Selectividad". Students who wish to prepare for the "Selectividad" must take the full 20 week Term II.

### Spanish & Dance Program Group

20 hours per week + 10 Dance Lessons. Minimum Age 16. This 2 week program combines the Spanish Group Program 20 hours per week with 10 Sevillanas or Salsa dance lessons per week in the school's dance studio. All levels of Spanish are accepted. Spanish classes are held from 8:30 to 12:30, with dance classes from 14:00 to 16:00 or 16:00 to 18:00 (subject to variation).

### Master Class Senior Program

Group 15 hours per week + Daily Fieldtrips & Activities. Average Age 62. This 2-week program has been designed especially for young-at-heart retired people who want to make the most of the extra time they now have available. The school has created a course that combines some highly practical language study with social activities and visits to places of cultural and historical interest. 3 levels are available: Beginner, Intermediate and Advanced. The emphasis will always be on speaking.

Beginners will concentrate on highly practical situations such as how to ask directions, order drinks and food, book excursions, etc. The more advanced students will also discuss aspects of Spanish life, society, culture and politics. After your lessons the school arranges a program of daily activities and excursions to make the most of Andalucía's rich culture and history. These are frequently accompanied by a teacher and are often prepared in class. For example, you might learn the vocabulary of food, weights, measures and prices and then visit the Central Market with its vibrant atmosphere and spectacular displays of fish, sea food and fruits. Here you would practice asking the names and prices of the various items and enjoy the hustle and bustle.

### Spanish & Cooking

The program is a two week combination of the Intensive Group 20 hrs/wk course with a program of cooking lessons and associated activities. All levels of Spanish are accepted in the course. The program includes:

- \* 4 lessons per day of Intensive Group Spanish
- \* 2 Cooking lessons (complete menus) a week with dinner
- \* 1 cultural talk per week on a food/wine related topic
- \* 1 local visit to a venue of culinary interest
- \* A sumptuous farewell lunch (including wine) in the magnificent restaurant of the famous La Consula catering school
- \* A recipe course textbook
- \* An illustrated book of Spanish recipes
- \* All transport costs for the local visits

Young Adult Summer Program: Ages 16-20 years. A special program designed for older teens.

### ACCOMMODATIONS

Club Hispánico School Residence It offers a range of options from fairly small singles to large Executive rooms, all with en-suite facilities. There is a 24-hour reception, onsite cafeteria, daily maid service and bed linen is changed once a week.

Host Families, Student and Executive Apartments also available.

### SPECIAL ACTIVITIES

Among the sports that you can easily practice while at Malaca include: Golf; Horseback riding; soccer; tennis and windsurfing. Malaca organizes parties, excursions, and all sorts of out-of-school activities and social events.

**TO REGISTER:** Complete the NRCSA Preregistration Form or contact the National Registration Center for Study Abroad at, P.O. Box 1393, Milwaukee, WI 53201 USA, or by calling (414) 278-0631; by Fax (414) 271-8884.

**Check out our website at <http://www.nrca.com>  
or email: [study@nrca.com](mailto:study@nrca.com)**

# Programs & Activities - Malaga, Spain

## Programs

Over the 25 years of its existence, the school staff and administration have developed a highly effective teaching system which has been made into a series of textbooks. These books form the basis of most of the teaching but they are also supplemented by other materials drawn from TV, radio, music, magazines, etc. The books contain a progressive series of lessons with integrated exercises and homework, each of which are intended to form one day's work.

Although the teaching is essentially "communicative" and you are encouraged to speak Spanish from day 1, we also ensure that you gain a good understanding of the grammar and structure of the language. The teachers have been trained in both traditional and more modern teaching methods and frequently use role-plays, suggestopedic methods, rhythm exercises and word games.



For the complete classification of Spanish levels offered, [please click here](#).

**Intensive** Group 20 hours per week. Minimum Age 16.

The school's Intensive is the standard general Spanish programs with a maximum of 10 students per class. The Intensive Program includes 4 lessons per day, while the Special Intensive Program consists of 6 lessons per day. Both programs are offered at all levels from total beginner to advanced and cover all aspects of the Spanish language.

**Super Intensive Mini-Group 30 hrs/wk** This program consists of 6 lessons per day and like the Intensive Group Program, is offered at all levels from total beginner to advanced and covers all aspects of the Spanish language. 6 Students per class.



The programs have been carefully designed to provide an intensive, progressive course, with a good balance between the various skills and continual reinforcement of the new points introduced each day. Each day's class work is further reinforced by an average of 1 - 2 hours integrated homework.

The programs are offered in progressive 4-week units. The minimum duration is 2 weeks and longer stay students will normally complete the entire program in 20-24 weeks. Those staying for only 2 weeks receive half a 4-week Unit.

In Advanced classes there are also special lessons on Spanish culture, history, geography, etc.

Class times for the Intensive Program are 8.30 - 12.30 or 14.30 - 18.30 (2:30PM - 6:30PM) or 16.00 - 20.00 (4:00PM - 8:00PM).

Class times for the Special Intensive Program are 8.30 - 14.30 (8:30AM - 2:30PM) or 14.30 - 20.30 (2:30PM - 8:30PM).

\*Class times are subject to variation.

**One-to-One Tutor Program** Minimum Age 18

The One-to-One Tutor program is the frequently preferred option for the highly demanding business or professional person. The program is based around the course books but the supplementary materials are adapted to the client's individual needs. In addition, the school can adapt the style of teaching to the individual student's preferred method of learning. As a result of tailoring the course to meet the needs of the student, progress can at times be startlingly fast.

Class times can be scheduled to the student's needs or wishes. Please indicated on the NRCSA Preregistration Form what time schedule you would like. Students may also request an examination at the end of the course if desired.

## Programs

Intensive  
Super Intensive Mini-Group  
One-to-One Tutor  
DELE Exam Preparation  
Executive Mini-Group Program  
Spanish for International Trade & Commerce  
Spanish Hispanic Studies  
Spanish & Dance  
Master Class Senior  
Spanish & Cooking  
Young Adult Summer

Admissions & Academic Credit  
Certificates & Exams

## Activities

Social & Sporting Activities

## Comments

*"I enjoyed most the aspect of meeting and becoming friendly with the other students. I enjoyed learning about their backgrounds and cultures, as well as the Spanish culture."*

Tailor, Brooklyn, NY

*"The part I enjoyed most about my foreign experience was meeting people from all over the world. I love learning about other cultures, especially when the knowledge comes directly from the people who live in a different culture, rather than from a book."*

University Student,  
Wawatosa, WI

*"I appreciated the willingness of your staff to talk with me over the phone. I am now enthusiastic and committed to learning Spanish and I continue to take it at the University here, my life is in general much brighter for this endeavor."*

Secretary, St. Paul, MN

*"The friendships I made and the excellent teaching method of the school. It was great!"*

Librarian, Washington, DC

*"The setting for each of the schools involved (through NRCSA) is just as exiting as the spectacular beaches, mountains, archaeological zones, artisan centers, native markets, or sophisticated city entertainment that surround them."*

Rocky Mountain News

**DELE Exam Preparation Course** 4 week program is designed specifically to prepare students for the DELE exam administered by the Instituto Cervantes. The exam dates for 2004 are May 14 and Nov 12. The April DELE Exam Preparation Course will be completed two weeks before the May exam date. Exam preparation course price does not include DELE exam fees.

**Executive Mini-Group Program** Mini-Group 30 hours per week. Minimum Age 18.

Total beginner to advanced levels accepted. This is a highly intensive course in 2 week units designed for business executives, professionals and other highly motivated people who need to make rapid progress in a short time. As the Mini-Group program aims to progress very rapidly, participants will need to dedicate a lot of time and effort outside the lesson hours to practice and consolidate the work introduced in class. Actual progress will, of course, depend on the linguistic aptitudes of the participants. With an average of 4 in a class (max. 6) each participant receives a high degree of personal attention and gets plenty of opportunity to speak. Furthermore, the supplementary materials used in the more communicative sessions can take into account the individual needs and interests of the group members. Class times are 08.30 to 14.30 (subject to variation).

Examinations are not offered as a part of this course, however, for those who wish to take an internal examination, the school can arrange it outside class hours.

Participants may take advantage of the extra degree of comfort provided in the Executive Single rooms in student residence. This lodging option is available at additional cost.

### **Spanish for International Trade & Commerce**

This is a specialized course of 4 weeks 4 lessons per day in Intensive Group format. You need to have an advanced level of Spanish to join this course. This course combines the study of advanced Spanish with the teaching of concepts and customs of commerce in Spain: e.g. Import/export procedures, banking infrastructure, the Media, marketing, business correspondence, etc at the 5th and 6th hours.

Participants may use this course to prepare themselves for the Madrid Chamber of Commerce and take the examination at the end of the course at additional cost. When registering for this course, please indicate if you would like to take the exam.



**Spanish Hispanic Studies Program** Group 20 hours per week. Minimum Age 18.

This program is intended for students who want to attain a high level of Spanish and learn about the civilization and culture of Andalucía and Spain. Students completing the program may also prepare for the University Entrance Examinations for Overseas students: "Selectividad para Extranjeros".

The program is divided into 2 terms. Students may choose to take either one term or both.:

1. **Term I (16 Weeks):** Starting in August or September each year, this is an Intensive course of General Spanish from the Beginner level (A1) through Advanced level (C2). Students may join the course at 4 week modules according to their level. Aim: To prepare students for Term II by covering levels A, B and C at a slightly slower pace and in greater depth than in the standard Intensive Program.

2. **Term II (20 Weeks):** Starting in January each year this course combines Advanced Spanish from Superior 1 level (D1) through Master 2 level (E2) and aspects of Spanish culture and civilization. The latter is taught at pre-University level. Students may join the course in 4 week modules according to their level. Aims: To cover levels D and E and prepare students for the DELE Básico, provide students with an overview of Spanish civilization and culture and, for those who want, a preparation for the "Selectividad". Students who wish to prepare for the "Selectividad" must take the full 20 week Term II.

### **Hispanic Studies Term II Content**

**Month; Number of Weeks; Prerequisite; Content**

January 4 Weeks C2 Spanish + Geography, History I, Art I.

February 4 Weeks D1 Spanish + History II, Literature I, Spanish Way of Life.

March 4 Weeks D2 Spanish + History III, Art II, Literature II.

April 4 Weeks D2 Spanish OR DELE Basico + Social & Political Institutions, The Economy.

May 4 Weeks D2 Spanish + Spanish Cinema & the Media, Textual Comparisons.

Note: Supplementary books for Term II are not included in the program cost. Students may purchase these books at the school.

For the complete classification of Spanish levels, please click [here](#).

### **Certificates/Diplomas**

- \* All students who attend classes regularly will receive a Certificate of Attendance.
- \* Students successfully passing the school's examinations in Spanish will receive a school-generated Diploma in Hispanic Studies.

**Spanish & Dance Program** Group 20 hours per week + 10 Dance Lessons. Minimum Age 16.

This 2 week program combines the Spanish Group Program 20 hours per week with 10 Sevillanas or Salsa dance lessons per week in the school's dance studio. All levels of Spanish are accepted. Spanish classes are held from 8:30 to 12:30, with dance classes from 14:00 to 16:00 or 16:00 to 18:00 (subject to variation).



### **Master Class Senior Program**

Group 15 hours per week + Daily Fieldtrips & Activities. Average Age 62.

This 2-week program has been designed especially for young-at-heart retired people who want to make the most of the extra time they now have available. The school has created a course that combines some highly practical language study with social activities and visits to places of cultural and historical interest. 3 levels are available: Beginner, Intermediate and Advanced. The emphasis will

always be on speaking.

The Beginners will concentrate on highly practical situations such as how to ask directions, order drinks and food, book excursions, etc. The more advanced students will also discuss aspects of Spanish life, society, culture and politics. After your lessons the school arranges a program of daily activities and excursions to make the most of Andalucía's rich culture and history. These are frequently accompanied by a teacher and are often prepared in class. For example, you might learn the vocabulary of food, weights, measures and prices and then visit the Central Market with its vibrant atmosphere and spectacular displays of fish, sea food and fruits. Here you would practice asking the names and prices of the various items and enjoy the hustle and bustle.

### **Spanish & Cooking**

The program is a two week combination of the Intensive Group 20 hrs/wk course with a program of cooking lessons and associated activities. All levels of Spanish are accepted in the course. The program includes:

- \* 4 lessons per day of Intensive Group Spanish
- \* 2 Cooking lessons (complete menus) per week followed by dinner
- \* 1 cultural talk per week on a food/wine related topic
- \* 1 local visit to a venue of culinary interest
- \* A sumptuous farewell lunch (including wine) in the magnificent restaurant of the famous La Consula catering school
- \* A recipe course textbook
- \* An illustrated book of Spanish recipes
- \* All transport costs for the local visits

**Young Adult Summer Program:** Ages 16-20 years. A special program designed for older teens.

[View more information about the Young Adult Summer Program](#)

## Admissions & Academic Credit

Students age 16 years and older are welcomed into the Intensive, Special Intensive, and Spanish & Dance Programs regardless of educational background, occupation or nationality. No previous knowledge of Spanish is required.

Students ages 16-20 years are welcome in the Young Adult Program regardless of educational background, occupation or nationality. No previous knowledge of Spanish is required.

The school welcomes students age 18 years and older into the One-to-One Tutor, Executive Mini-Group, Commercial Spanish, Spanish Hispanic Studies Programs regardless of educational background, occupation or nationality. No previous knowledge of Spanish is required except where otherwise indicated.

The average age for the Master Class Senior Program is 62 years and all are welcome over the age of 50 regardless of educational background, occupation or nationality. No previous knowledge of Spanish is required.

The Teacher Refresher Course is open to both native and non-native Spanish speakers 20 years and older regardless of nationality, however, non-native Spanish speakers must be practicing teachers of Spanish as a second language.

Students desiring credit for their study should contact their home school or request the NRCSA Credit Fact Sheet. Generally, U.S. schools consider 15 hours of study to be equal to 1 semester credit.

For more information about academic credit in Spanish speaking countries, [please click here](#).  
For general information on academic credit, [please click here](#).

## Certificates & Exams

There are regular internal examinations to assess the progress of each student, with the exam policy varying depending on the course. Assuming you attend classes regularly you also receive a Certificate of Attendance.

A diploma will be awarded to those who pass the examinations of the Advanced and Superior level courses.

The DELE diplomas are official diplomas given by the Spanish Ministry of Education and Science which recognize the candidate as having a certain skill level in the Spanish language. Preparation for the following DELE exams in the Humanities is offered at additional cost:

- Diploma Inicial
- Diploma Básico
- Diploma Superior

# ALL NRCSA PROGRAMS INCLUDE:

- ✓ Foreign language immersion classes
- ✓ Small interactive group and/or one-on-one instruction
- ✓ Culture program integrated into conversation classes, activities
- ✓ Meet-the-People interaction at school, homestays, & community events
- ✓ Orientation covering attractions, how to, health, safety, entertainment
- ✓ Academic assessments, placement-exit tests, Achievement Certificate
- ✓ Lodging (reduced fee if no lodging needed)
- ✓ Meals and/or cooking facilities at most centres
- ✓ Insurance: medical and accident - see below
- ✓ Emergency Hotline staffed 24 hours/day - see below
- ✓ Housing Coordinator familiar with area homestays, apartments, hotels
- ✓ Activity Coordinator facilitates transfers, cultural/social activities, tours
- ✓ Program Director experienced working with foreign participants
- ✓ Qualified, experienced, and certified educators
- ✓ Weekly proficiency goals and progress assessments
- ✓ Planning and Orientation materials
- ✓ International Ambiance, participants from around-the-world welcome
- ✓ Telecom assistance, web/e-mail access, usually on-site
- ✓ Local taxes for included services
- ✓ 24:7 Culture Immersion w/ native speakers: class, homestay, community
- ✓ **ALL NRCSA PROGRAMS INCLUDE the following INSURANCE\***

ACCIDENT INSURANCE up to \$10,000    SICKNESS INSURANCE up to \$10,000

EMERGENCY MEDICAL EVACUATION up to \$25,000

EMERGENCY REUNION up to \$5,000

REPATRIATION up to \$7,500

LIFE INSURANCE \$5,000

plus

24 HOUR EMERGENCY WORLDWIDE MULTI-LINGUAL TELEPHONE ASSISTANCE

## MANY ALSO OFFER

- ✓ **Tours:** cultural visits, day and weekend fieldtrips
- ✓ **Art:** classes/workshops, craft, dance, theater, fashion, music, photo
- ✓ **Humanities:** culture, area studies, hist, lit, gov't, educ, comm, plus...
- ✓ **Health:** golf, swimming, tennis, diving, skiing, riding, plus...
- ✓ **Special:** vocabulary classes tailored to your professional needs
- ✓ **Lodging:** homestay, apartment, dorm, hotel, special diet
- ✓ **Food:** home cooking, cooking classes, dine-around, wine tasting
- ✓ **Family:** services, daycare, child classes, community services
- ✓ **Teacher:** training, workshops, practicums, practice teaching, ECH
- ✓ **Teen:** camps and youth programs (including experiential)
- ✓ **University:** credit, undergraduate and graduate
- ✓ **Professional:** development credit in many fields, licensure, CEU
- ✓ **Volunteer:** medical, social service, ecology, teach plus...
- ✓ **Internships:** business, media, arts, eco, tourism, computer, plus...
- ✓ **Business:** classes, visits, networking, executive support services
- ✓ **Peer-to-Peer:** share interests, network by profession or hobby
- ✓ **Current Events & Professional Workshops, Holiday Courses**
- ✓ **Distance** educ liaison service, independent studies, research assist
- ✓ **Free** books and course materials. Return at end of studies
- ✓ **Free** airport transfers and internet access
- ✓ **Assessment** reports for attendance, progress, acculturation if needed
- ✓ **Medical:** professional training, law, social work, sciences etc.

*\* If you have a problem while studying abroad, call the 24 hour hotline! Call Any Time from Anywhere! Medical or travel emergencies, legal or medical or embassy referrals, lost passport or luggage, emergency message relay, coordinating emergency prescription replacement or cash transfer, emergency translations, 24-hour medical monitoring. Problems seldom occur, but when they do, it is nice to know insurance and worldwide assistance are included in your cost for study dates prepaid through NRCSA as reflected on your NRCSA confirmation. Additional optional insurance available upon request. Refer to the certificate for specific terms, conditions and other details regarding benefits, limitations, eligibility and exclusions of this plan. Questions? Contact NRCSA: Tel: 414-278-0631 ... E-Mail: info@nrcca.com ... Web: <http://www.nrcca.com>*

For Questions, Concerns, or Registration, Contact NRCSA  
National Registration Center for Study Abroad \* Box 1393, Milwaukee WI 53201 USA  
Tel 414-278-0631 \* Fax 414-271-8884\* [www.nrcca.com](http://www.nrcca.com) \* [info@nrcca.com](mailto:info@nrcca.com)  
Since 1968 \* Language-Culture Immersion Worldwide \* Start Weekly \* All Ages \* Credit, CEU or Enrichment

# PREREGISTRATION FORM – NRCSA PROGRAMS

1. Complete & send to NRCSA, P.O. Box 1393, Milwaukee, WI 53201, USA • Tel. (414) 278-0631 • Fax (414) 271-8884 • Web: www.nrcca.com
2. Enclose a non-refundable deposit/registration fee of \$140 per person, per program, payable to NRCSA (\$40 registration fee & \$100 program deposit applied towards the program costs).
3. Register early. Add \$40 per person late enrollment fee if paying in full within 40 days of departure. Within 20 days, payments by certified check.
4. Credit Cards may be used for deposits (see "H" below). NRCSA street address for overnight deliveries is 207 East Buffalo Street, Suite 610, Milwaukee, WI 53202 USA. You are welcome to photocopy this form. Please send separate form for each school if taking multiple programs.

**A. Name(s)** \_\_\_\_\_ Sex \_\_\_\_\_ Birthdate \_\_\_\_\_ Citizenship \_\_\_\_\_  
Please print  
 \_\_\_\_\_ Employer \_\_\_\_\_ Occupation \_\_\_\_\_  
If student, school attending and year

Street: \_\_\_\_\_ Tel. Home: \_\_\_\_\_  
Street address (not P.O. Box) where someone can sign for documents sent to you.  
 City/State/Zip: \_\_\_\_\_ Tel. Work: \_\_\_\_\_  
 Fax: \_\_\_\_\_  
 E-mail: \_\_\_\_\_

In Emergency, notify: \_\_\_\_\_  
(Name, Address, Phone)

**B. BACKGROUND:** \_\_\_\_\_  
Describe your background in the course you're taking abroad. Check your ability level:  Beginner  Post Beginner  
 Intermediate  Advanced

**C. LODGING:** \_\_\_\_\_  
Schools will try (cannot guarantee) to meet them. Special Diet (may be available) at additional cost.

**D. GOALS:** \_\_\_\_\_

**E. INSURANCE:** Includes prepaid study dates. To extend coverage up to 30 days before/after study dates, add \$5/day or \$19/week and advise dates.

- Check Preferences.**  
 Single  Share Twin  Other: \_\_\_\_\_  
 Yes Smoking  No Smoking  Either  
 Yes Pets  No Pets  Either  
 Yes Children  No Children  Either
- PREFER:**  Homestay Involvement  Freedom to Come/Go  
**ARE YOU?**  Quiet  Outgoing  Frequent Traveler  
**OBJECTIVES:**  Enrichment  Academic Credit  Job Related  
**HOBBIES:**  Reading  Music  Cooking  Jogging  Sports

<b>F. PROGRAM INFORMATION</b>	School/Center
Program Name (use title from Dates & Fees)	City/Country
Date: Start Program	Date: Start Lodging (most start day before)
No. of hours day/week	No. of weeks attending
Disabilities/Allergies/Health Problems	2nd Choice Program
How did you learn about NRCSA?	Social Security Number
Options (see program for choices)	
<b>Your Signature</b> (if you are under age 18, both parents must also sign)	

**INSURANCE INCLUDED for PRE-PAID STUDY DATES**

**ACCIDENT / MEDICAL INSURANCE UP TO \$10,000**

**EMERGENCY MEDICAL EVACUATION UP TO \$25,000**

**EMERGENCY REUNION UP TO \$5,000**

**REPATRIATION UP TO \$7,500**

**LIFE INSURANCE \$5,000**

**24 HOUR EMERGENCY WORLDWIDE-MULTI-LINGUAL TELEPHONE ASSISTANCE**

For More Info: <http://www.nrcca.com/INS24hrHotline.html>

**H. CREDIT CARDS:**

For program deposit only (**not final payment**) check:  
 VISA  Mastercard  American Express Amount Charged \$ \_\_\_\_\_

\_\_\_\_\_  
Card Number (13 or more numbers) Exp Date

\_\_\_\_\_  
SIGNATURE (as on card) PRINT name (as on card)

**CHANGE FEES** of at least \$35 apply for each change you make. Some "changes" may result in cancellation fees.

**CANCELLATIONS** are effective the day received in writing by NRCSA in Milwaukee. All payments less \$140 per program fully refundable up to 60 days prior to departure. For cancellations within 60 days of departure, \$250 per person is not refundable; within 40 days of departure, less 50% of program cost or \$300 per person (whichever is greater); within 14 days of departure, 100% of program cost is non refundable. Airline cancellation penalties, if any, are in addition to those outlined above. Cancellation penalties are per person, per program. Medical, baggage (above that included) and cancellation insurance is strongly recommended. Attach a note if you have a medical condition or Rx which the school/center should know about.

**CONDITIONS:** Each institution listed herein is independent of the National Registration Center for Study Abroad (hereinafter referred to as NRCSA, controls, and will periodically make changes in the program. Classes may fill, be changed, or dropped by the sponsoring academic institutions. NRCSA is a division of Mibar Ltd. and is not responsible for these changes or other actions beyond its control such as strikes, postal delays or loss, mechanical breakdowns, weather, government actions, delay or acts/omissions of suppliers. NRCSA may make changes or substitutions or cancel any program. In the event of entire program cancellation by NRCSA, liability is limited to refunding all monies paid to NRCSA for said program. Passengers electing not to use portions of a program shall not be entitled to a refund. No agent or representative of NRCSA shall have the right to alter the provisions listed herein. Costs based on tariffs and exchange rates effective the date of printing of this material, and are subject to change. Additional costs resulting from such change will be paid by the participant. Registrations are valid when accepted by NRCSA in Milwaukee. The passage contract used by the airline, when issued, is the sole agreement between it and you. Photographs of or statements by participants may be used by NRCSA. NRCSA, group leaders or foreign coordinators, at their discretion, may get medical assistance for participants, or place them in a hospital, or fly them back to the U.S. for medical treatment. All costs related to medical treatment or evacuation will be paid by the participant. As visitors you are expected to adhere to foreign rules and customs. If the foreign staff feels you are not adhering to these rules and customs, your participation in the program shall terminate immediately without refund whatsoever. A "homestay" is defined as living with a local person(s) in the foreign country and may not be multi generational, multinational, etc. It is the responsibility of the participant to have required proof of citizenship and visa(s) if applicable - check with the consulate of the country(s) you will be visiting.

**INFORMATION USE:** Information provided to NRCSA will be shared with participating organizations to facilitate your registration.

**NOTE:** Classes canceled in honor of local holidays are not made up. Foreign Language schools use placement tests. If there is no group at your level, smaller group or tutor classes may be substituted with fewer hours per week. Classes are conducted entirely in the target language. See **Fast Facts Guide** for more information.