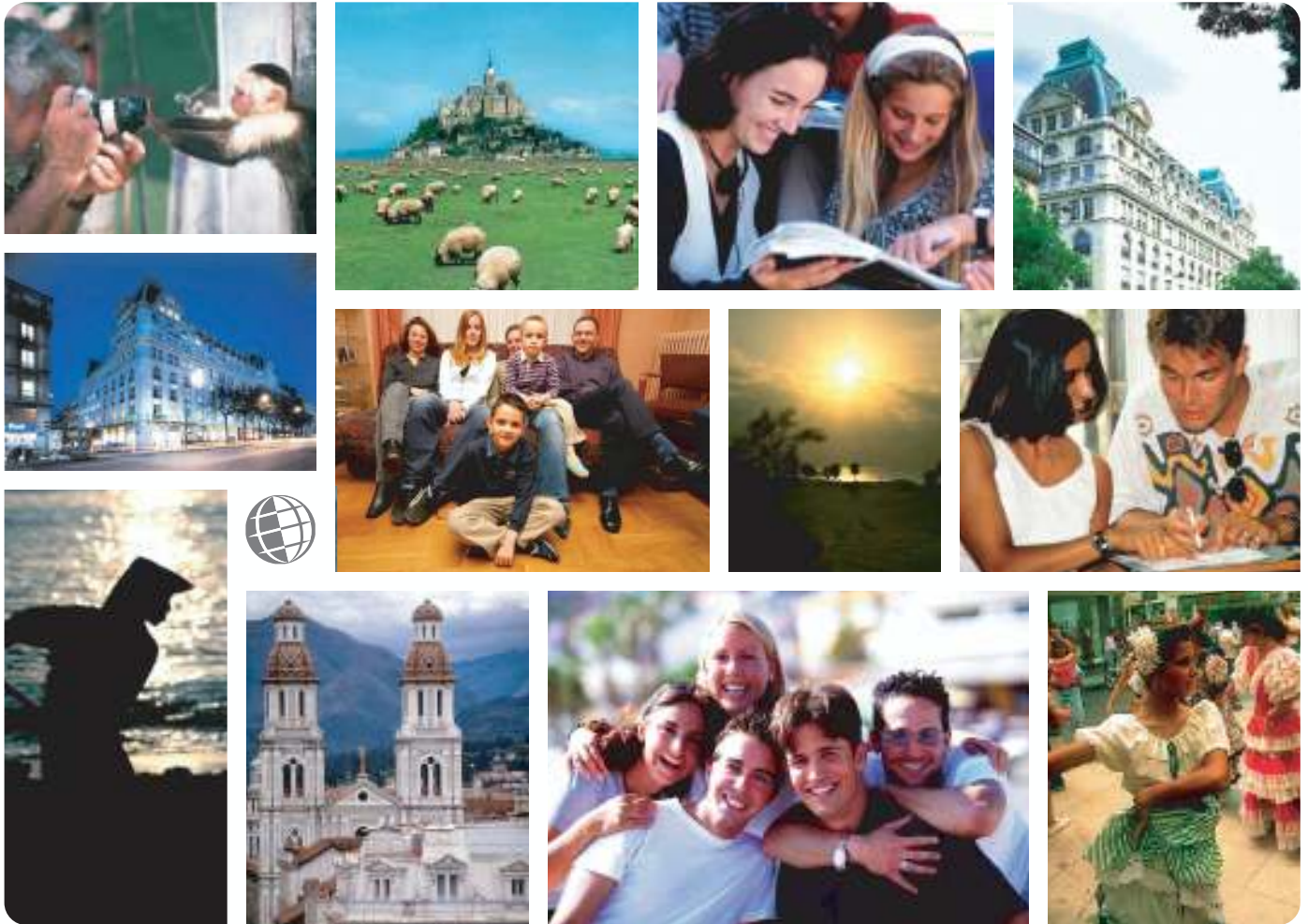


*Live the Language
Learn the Culture*

Foreign Language and Cultural Immersion Since 1968
**NATIONAL REGISTRATION CENTER
FOR STUDY ABROAD**



Spain 2008-2009

For more information please visit: www.nrca.com

NRCSA is a proud member of:



National Registration Center for Study Abroad
PO Box 1393 Milwaukee, Wisconsin 53201 USA
Tel: (414) 278-0631 Email: study@nrca.com

National Registration Center for Study Abroad (NRCSA)

P.O. Box 1393, Milwaukee, WI 53201 USA. Tel. 414 278 0631 Fax. 414 271 8884



Learn the Culture  Live the Language  Since 1968

ESTUDIO DE INMERSION (CILCE) – VALENCIA, SPAIN

ABOUT THE SCHOOL AND THE CITY

Estudio de Inmersion, founded in 1969, is located in Valencia on the Mediterranean coast, the city made famous by the exploits of El Cid. Its sole purpose is the teaching of Spanish to foreign students all year round. This has given Estudio de Inmersion wide experience of this type of teaching and the school is regarded as one of the leading language schools in this area. Through the expertise of Estudio de Inmersion's university qualified teaching staff, the learning of Spanish is made both effective and enjoyable. Estudio de Inmersion's Direct Teaching Method has been developed in order to combine a high level of student participation with special attention to the needs of individual students. The school could not be more conveniently located, right in the heart of Valencia's ancient city centre.

All instructors at Estudio de Inmersion are Spanish University-degreed teachers, native Spaniards who have had experience in Spanish language instruction. Teachers change each hour.

Valencia is a city of 750,000 inhabitants situated on the Mediterranean coast with extensive pleasant, sandy beaches and a warm, sunny climate. This climate permits a lively atmosphere in the streets throughout the year. It is nearly always possible to find a sunny spot in the open-air in one of its many cafes. If you wish to enjoy the annual fiestas of Valencia at the same time as you learn Spanish, visit the school during the months of March and July. From the 12th to the 19th of March the fiesta of "Las Fallas" is celebrated honoring Saint Joseph. From the 20th to the 31st of July, the Valencia "Fair" takes place. During this period there is great cultural activity in the city with many theater functions, concerts, ballets, firework displays, and bullfights.

ABOUT THE PROGRAM

A placement exam will be given to students with previous knowledge of Spanish on the first Monday of class. Results and class placement are posted the following day. Class size will never exceed 14, but normally classes are composed of 10 students or less.

Grammar explanations are all given in Spanish. The text has been compiled by the Directors of Estudio de Inmersion based on their experience in teaching Spanish as a second language. Instructors also use a variety of exercises derived from other sources, including newspapers and magazines. Video, cassettes, slides, records and films are used to complement the courses. Magazines, dictionaries, books, typewriter, games, etc. are available. Books used during the course are included in the price. Classes are held from 9:00 a.m. to 1:00 p.m. from Monday through Friday.

Group Program

The Group program includes 20 hours of classes weekly. Four levels, from beginner to advanced, are available with class subjects in grammatical structures, practical exercises, comprehension, conversation, vocabulary, composition, Spanish literature and culture. The program is offered throughout the year with stays from 2 weeks minimum.

Group/Tutor Program

The Group/Tutor program includes 20 hours per week of group classes, plus 5 private tutorial lessons per week. Minimum program length is 2 weeks.

Easter Course

Estudio de Inmersion offers a special 2 week Easter course. The total number of hours of classes is 36, 4 days per week (Monday - Thursday) and are distributed as follows:

* First week from 9 a.m. to 1 p.m.

* Second week 9 a.m. to 2 p.m.

No absolute beginners for this course.

ACCOMMODATIONS

Homestays

Estudio de Inmersion works closely with over 150 Valencian families who have been receiving students for many years. Students are placed two per family and as often as possible, the students will be of different nationalities in order to promote Language and Cultural exposure. Estudio de Inmersion is located in the center of the old city of Valencia and all families are within a 5-20 minute bus ride from school.

Other Accommodation

Hotel and apartment lodging available upon request.

SPECIAL ACTIVITIES

During your stay Estudio de Inmersion offers a number of free optional activities such as excursions, conferences, films, parties, visits to newspapers, theater, concerts, and visits to the city. These activities aid the student in obtaining an ample knowledge of Spanish culture and the special characteristics of the Valencian region.

TO REGISTER:

Complete the NRCSA Preregistration Form or contact the National Registration Center for Study Abroad at 823 North 2nd Street, P.O. Box 1393, Milwaukee, WI 53201 USA, or by calling (414) 278-0631; by Fax (414) 271-8884.

Check out our website at <http://www.nrcsa.com>
or e-mail us at study@nrcsa.com

Programs & Activities - Valencia, Spain

Programs
Group Program
Group/Tutor Program

Admissions &
Academic Credit
Certificates & Exams

Programs

A placement exam is given to students with previous knowledge of Spanish on the first Monday of class. Results and class placement are posted the following day. Class size will never exceed 14, but normally classes are composed of 10 students or less. Total enrollment varies from 50 students in winter to a maximum of 250 students in the summer.

Grammar explanations are all given in Spanish. The text has been compiled by the academic directors based on their experience in teaching Spanish as a second language. Instructors also use a variety of exercises derived from other sources, including newspapers and magazines. Video, cassettes, slides, records and films are used to compliment the courses. Magazines, dictionaries, books, typewriter, games, etc. are available. Books used during the course are included in the price. Classes are held from 9:00 to 13:00, Monday - Friday.



The school offers the following levels of study:

- **Beginners:** 4 hours of language, beginning with vocabulary and grammar for the first weeks. Vocabulary is taught with the use of slides in order to avoid translation. As beginner progress, Spanish culture and folklore are gradually introduced during the last hour of class. Culture and folklore discussion topics are diverse in content - everything from cooking to bullfighting. Slides are also used here to facilitate comprehension and avoid translation.
- **Intermediate level:** 4 hours divided into one hour each of grammar; conversation; Spanish culture and folklore; and, practice including dictation, essay and exercises. Subjects such as Spanish fiestas, current events in Spain, or visits to the local Valencian landmarks. It normally takes 4-8 weeks to complete each Beginning and Intermediate level class.
- **Advanced levels of Spanish** include increased conversation and lectures on Spanish culture, ancient through current Spanish history, literature, and art. It normally takes 3 months to complete this level.

Group Program The Group program includes 20 hours of classes weekly. 4 levels, from elementary to advanced, are available with class subjects in grammatical structures, practical exercises, comprehension, conversation, vocabulary, composition, Spanish literature and culture. The program is offered throughout the year with stays from 2 weeks minimum. Students have use of video, cassettes, slides, records and films, as supplementary material, and two activities per week are included.

Group/Tutor Program The Group/Tutor program includes 20 hours per week of group classes, plus 5 private tutorial lessons per week,. Minimum program length is 2 weeks.

Admissions & Academic Credit

Students age 17 years and older are welcomed regardless of educational background, occupation or nationality. No previous knowledge of Spanish is required except where otherwise indicated.

Students desiring credit for their study should contact their home school or request the NRCSA Credit Fact Sheet. Generally, U.S. schools consider 15 hours of study to be equal to 1 semester credit. Check with your own college or university for credit transfer.

For general information on academic credit, [please click here](#).

Certificates & Exams

Comments

"My experience in Spain was extraordinary & enriching beyond description. I grew as a person, developed a more solid sense of self, & acquired the ability to speak better Spanish. I met wonderful people from all over the world & learned to exist fairly well in a new culture. I would recommend study abroad to anyone interested in an immersion program."

Science Teacher,
New York, NY

"The family stay was wonderful. I believe every student should take advantage of this opportunity at least once - the immersion into another culture is invaluable."

University Student, Palm
Beach, FL

Upon completing a level, there will be a test to evaluate the progress in the course, which will be accredited by a school certificate as well as a personal report.

The Super Intensive Mini-Group Program is recognized in Germany as a Professional Training Program.

The DELE diplomas are official diplomas given by the Spanish Ministry of Education and Science which recognize the candidate as having a certain skill level in the Spanish language. The exams are held in in May and November in various cities.

Preparation for the following DELE exams is offered at additional cost:

1. Diploma Inicial
2. Diploma Básico
3. Diploma Superior

The Cámara Oficial de Comercio e Industria Exam is for intermediate and advanced student only. The exam will be given in Valencia. The preparation course is 4 weeks long.

National Registration Center for Study Abroad
P.O. Box 1393 Milwaukee, WI 53201 USA
Tel: (414) 278-0631 **Fax:** (414) 271-8884 **E-Mail:** study@nrca.com

ALL NRCSA PROGRAMS INCLUDE:

- ✓ Foreign language immersion classes
- ✓ Small interactive group and/or one-on-one instruction
- ✓ Culture program integrated into conversation classes, activities
- ✓ Meet-the-People interaction at school, homestays, & community events
- ✓ Orientation covering attractions, how to, health, safety, entertainment
- ✓ Academic assessments, placement-exit tests, Achievement Certificate
- ✓ Lodging (reduced fee if no lodging needed)
- ✓ Meals and/or cooking facilities at most centres
- ✓ Insurance: medical and accident - see below
- ✓ Emergency Hotline staffed 24 hours/day - see below
- ✓ Housing Coordinator familiar with area homestays, apartments, hotels
- ✓ Activity Coordinator facilitates transfers, cultural/social activities, tours
- ✓ Program Director experienced working with foreign participants
- ✓ Qualified, experienced, and certified educators
- ✓ Weekly proficiency goals and progress assessments
- ✓ Planning and Orientation materials
- ✓ International Ambiance, participants from around-the-world welcome
- ✓ Telecom assistance, web/e-mail access, usually on-site
- ✓ Local taxes for included services
- ✓ 24:7 Culture Immersion w/ native speakers: class, homestay, community
- ✓ **ALL NRCSA PROGRAMS INCLUDE the following INSURANCE***

ACCIDENT INSURANCE up to \$10,000 SICKNESS INSURANCE up to \$10,000

EMERGENCY MEDICAL EVACUATION up to \$25,000

EMERGENCY REUNION up to \$5,000

REPATRIATION up to \$7,500

LIFE INSURANCE \$5,000

plus

24 HOUR EMERGENCY WORLDWIDE MULTI-LINGUAL TELEPHONE ASSISTANCE

MANY ALSO OFFER

- ✓ **Tours:** cultural visits, day and weekend fieldtrips
- ✓ **Art:** classes/workshops, craft, dance, theater, fashion, music, photo
- ✓ **Humanities:** culture, area studies, hist, lit, gov't, educ, comm, plus...
- ✓ **Health:** golf, swimming, tennis, diving, skiing, riding, plus...
- ✓ **Special:** vocabulary classes tailored to your professional needs
- ✓ **Lodging:** homestay, apartment, dorm, hotel, special diet
- ✓ **Food:** home cooking, cooking classes, dine-around, wine tasting
- ✓ **Family:** services, daycare, child classes, community services
- ✓ **Teacher:** training, workshops, practicums, practice teaching, ECH
- ✓ **Teen:** camps and youth programs (including experiential)
- ✓ **University:** credit, undergraduate and graduate
- ✓ **Professional:** development credit in many fields, licensure, CEU
- ✓ **Volunteer:** medical, social service, ecology, teach plus...
- ✓ **Internships:** business, media, arts, eco, tourism, computer, plus...
- ✓ **Business:** classes, visits, networking, executive support services
- ✓ **Peer-to-Peer:** share interests, network by profession or hobby
- ✓ **Current Events & Professional Workshops, Holiday Courses**
- ✓ **Distance** educ liaison service, independent studies, research assist
- ✓ **Free** books and course materials. Return at end of studies
- ✓ **Free** airport transfers and internet access
- ✓ **Assessment** reports for attendance, progress, acculturation if needed
- ✓ **Medical:** professional training, law, social work, sciences etc.

** If you have a problem while studying abroad, call the 24 hour hotline! Call Any Time from Anywhere! Medical or travel emergencies, legal or medical or embassy referrals, lost passport or luggage, emergency message relay, coordinating emergency prescription replacement or cash transfer, emergency translations, 24-hour medical monitoring. Problems seldom occur, but when they do, it is nice to know insurance and worldwide assistance are included in your cost for study dates prepaid through NRCSA as reflected on your NRCSA confirmation. Additional optional insurance available upon request. Refer to the certificate for specific terms, conditions and other details regarding benefits, limitations, eligibility and exclusions of this plan. Questions? Contact NRCSA: Tel: 414-278-0631 ... E-Mail: info@nrcca.com ... Web: <http://www.nrcca.com>*

For Questions, Concerns, or Registration, Contact NRCSA
National Registration Center for Study Abroad * Box 1393, Milwaukee WI 53201 USA
Tel 414-278-0631 * Fax 414-271-8884* www.nrcca.com * info@nrcca.com
Since 1968 * Language-Culture Immersion Worldwide * Start Weekly * All Ages * Credit, CEU or Enrichment

PREREGISTRATION FORM – NRCSA PROGRAMS

1. Complete & send to NRCSA, P.O. Box 1393, Milwaukee, WI 53201, USA • Tel. (414) 278-0631 • Fax (414) 271-8884 • Web: www.nrcca.com
2. Enclose a non-refundable deposit/registration fee of \$140 per person, per program, payable to NRCSA (\$40 registration fee & \$100 program deposit applied towards the program costs).
3. Register early. Add \$40 per person late enrollment fee if paying in full within 40 days of departure. Within 20 days, payments by certified check.
4. Credit Cards may be used for deposits (see "H" below). NRCSA street address for overnight deliveries is 207 East Buffalo Street, Suite 610, Milwaukee, WI 53202 USA. You are welcome to photocopy this form. Please send separate form for each school if taking multiple programs.

A. Name(s) _____ Sex _____ Birthdate _____ Citizenship _____
Please print
 _____ Employer _____ Occupation _____
If student, school attending and year

Street: _____ Tel. Home: _____
Street address (not P.O. Box) where someone can sign for documents sent to you.
 City/State/Zip: _____ Tel. Work: _____
 Fax: _____
 E-mail: _____

In Emergency, notify: _____
(Name, Address, Phone)

B. BACKGROUND: _____
Describe your background in the course you're taking abroad. Check your ability level: Beginner Post Beginner
 Intermediate Advanced

C. LODGING: _____
Schools will try (cannot guarantee) to meet them. Special Diet (may be available) at additional cost.

D. GOALS: _____

E. INSURANCE: Includes prepaid study dates. To extend coverage up to 30 days before/after study dates, add \$5/day or \$19/week and advise dates.

- Check Preferences.**
- Single Share Twin Other: _____
 Yes Smoking No Smoking Either
 Yes Pets No Pets Either
 Yes Children No Children Either
- PREFER:** Homestay Involvement Freedom to Come/Go
ARE YOU? Quiet Outgoing Frequent Traveler
OBJECTIVES: Enrichment Academic Credit Job Related
HOBBIES: Reading Music Cooking Jogging Sports

F. PROGRAM INFORMATION	School/Center
Program Name (use title from Dates & Fees)	City/Country
Date: Start Program	Date: Start Lodging (most start day before)
No. of hours day/week	No. of weeks attending
Disabilities/Allergies/Health Problems	2nd Choice Program
How did you learn about NRCSA?	Social Security Number
Options (see program for choices)	
Your Signature (if you are under age 18, both parents must also sign)	

INSURANCE INCLUDED for PRE-PAID STUDY DATES

ACCIDENT / MEDICAL INSURANCE UP TO \$10,000

EMERGENCY MEDICAL EVACUATION UP TO \$25,000

EMERGENCY REUNION UP TO \$5,000

REPATRIATION UP TO \$7,500

LIFE INSURANCE \$5,000

24 HOUR EMERGENCY WORLDWIDE-MULTI-LINGUAL TELEPHONE ASSISTANCE

For More Info: <http://www.nrcca.com/INS24hrHotline.html>

H. CREDIT CARDS:

For program deposit only (**not final payment**) check:
 VISA Mastercard American Express Amount Charged \$ _____

_____ / _____
Card Number (13 or more numbers) Exp Date

SIGNATURE (as on card) PRINT name (as on card)

CHANGE FEES of at least \$35 apply for each change you make. Some "changes" may result in cancellation fees.

CANCELLATIONS are effective the day received in writing by NRCSA in Milwaukee. All payments less \$140 per program fully refundable up to 60 days prior to departure. For cancellations within 60 days of departure, \$250 per person is not refundable; within 40 days of departure, less 50% of program cost or \$300 per person (whichever is greater); within 14 days of departure, 100% of program cost is non refundable. Airline cancellation penalties, if any, are in addition to those outlined above. Cancellation penalties are per person, per program. Medical, baggage (above that included) and cancellation insurance is strongly recommended. Attach a note if you have a medical condition or Rx which the school/center should know about.

CONDITIONS: Each institution listed herein is independent of the National Registration Center for Study Abroad (hereinafter referred to as NRCSA, controls, and will periodically make changes in the program. Classes may fill, be changed, or dropped by the sponsoring academic institutions. NRCSA is a division of Mibar Ltd. and is not responsible for these changes or other actions beyond its control such as strikes, postal delays or loss, mechanical breakdowns, weather, government actions, delay or acts/omissions of suppliers. NRCSA may make changes or substitutions or cancel any program. In the event of entire program cancellation by NRCSA, liability is limited to refunding all monies paid to NRCSA for said program. Passengers electing not to use portions of a program shall not be entitled to a refund. No agent or representative of NRCSA shall have the right to alter the provisions listed herein. Costs based on tariffs and exchange rates effective the date of printing of this material, and are subject to change. Additional costs resulting from such change will be paid by the participant. Registrations are valid when accepted by NRCSA in Milwaukee. The passage contract used by the airline, when issued, is the sole agreement between it and you. Photographs of or statements by participants may be used by NRCSA. NRCSA, group leaders or foreign coordinators, at their discretion, may get medical assistance for participants, or place them in a hospital, or fly them back to the U.S. for medical treatment. All costs related to medical treatment or evacuation will be paid by the participant. As visitors you are expected to adhere to foreign rules and customs. If the foreign staff feels you are not adhering to these rules and customs, your participation in the program shall terminate immediately without refund whatsoever. A "homestay" is defined as living with a local person(s) in the foreign country and may not be multi generational, multinational, etc. It is the responsibility of the participant to have required proof of citizenship and visa(s) if applicable - check with the consulate of the country(s) you will be visiting.

INFORMATION USE: Information provided to NRCSA will be shared with participating organizations to facilitate your registration.

NOTE: Classes canceled in honor of local holidays are not made up. Foreign Language schools use placement tests. If there is no group at your level, smaller group or tutor classes may be substituted with fewer hours per week. Classes are conducted entirely in the target language. See **Fast Facts Guide** for more information.