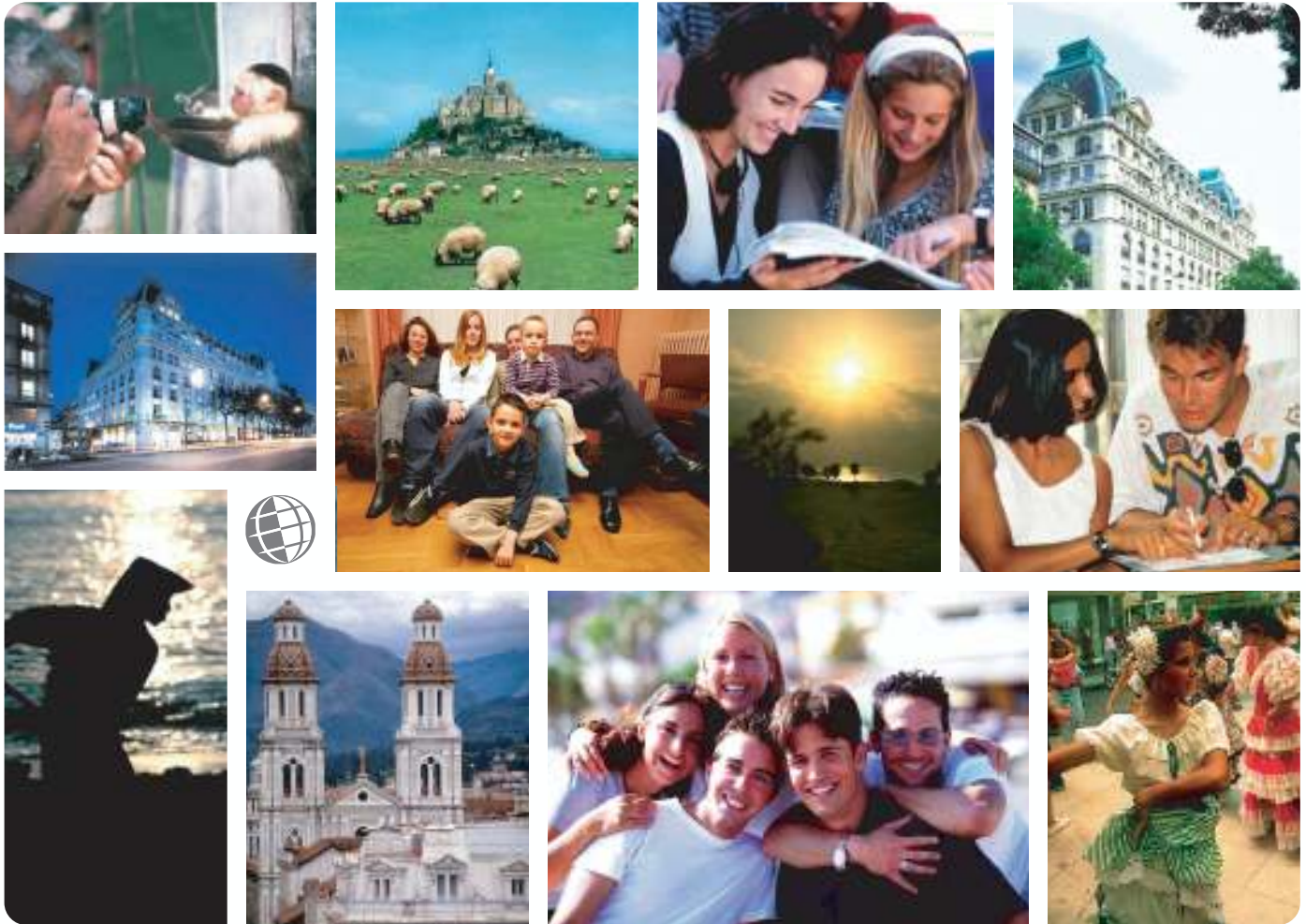


*Live the Language  
Learn the Culture*

Foreign Language and Cultural Immersion Since 1968

# **NATIONAL REGISTRATION CENTER FOR STUDY ABROAD**



## **Switzerland**

For more information please visit: [www.nrcsa.com](http://www.nrcsa.com)

NRCSA is a proud member of:



**National Registration Center for Study Abroad**  
PO Box 1393 Milwaukee, Wisconsin 53201 USA  
Tel: (414) 278-0631 Email: [study@nrcsa.com](mailto:study@nrcsa.com)

# National Registration Center for Study Abroad (NRCSA)

P.O. Box 1393, Milwaukee, WI 53201 USA. Tel. 414 278 0631 Fax. 414 271 8884



Learn the Culture  Live the Language  Since 1968

## LAUSANNE LANGUAGE SCHOOL – LAUSANNE, SWITZERLAND

### ABOUT THE SCHOOL AND THE CITY

Lausanne Language School is part of the 25-center system in eight countries of the world, established as meeting places for people of all ages and backgrounds who are united in a common aim: to learn a new language and to develop their understanding of other people. The school is run in association with the cultural department of Migros Vaud and is located right in the centre of town in a quiet pedestrian area. The building is designed for language teaching with 12 classrooms, a Multi-Media Learning Center, a Foyer with vending machines, and a terrace.

All Lausanne Language School teachers are trained, qualified staff who specialize in language teaching and are teaching in their native language to adults. Classes are taught by a team of 2 or 3 teachers, one of whom has overall responsibility of course planning. The teachers will use student feedback in weekly and daily work plans taking account of the needs of the individuals in the class.

In **Lausanne**, unlike most big capitals, the pace of life is not at all hectic. Even so, it is an industrious town, a busy commercial centre. But here everyone keeps a sense of proportion and takes the time to live. Here, it's the quality of life that counts. Each district, street, park and shop attempts to outshine the others, but always in the best of good taste and with due moderation! The forest of Sauvabelin is like a crown of greenery above Lausanne. From the lake, the city looks as though it had its own reflections for foundations. Lausanne is not a town to be passed through in a hurry. It must be visited leisurely, in all directions. And with all your senses on alert.

Over 21,000 students attend Lausanne Language Schools each year, from a variety of ages, educational backgrounds and nationalities. By offering a variety of courses for different levels, selecting well-qualified teachers, setting clear and realistic learning objectives, and providing students with opportunities for self assessment, the Lausanne Language Schools have designed classes to meet your needs.

### ABOUT THE PROGRAM

#### Basic Course

20 lessons per week. Available for students at any level beginning to advanced. Each lesson has a duration of 50 minutes. The courses take place in the morning, Monday-Friday. Systematic training in speaking and writing, with phases of intensive study alternating with active exercises aimed at teaching the basic skills necessary for understanding, speaking and writing French. All students are expected to work on grammar and the way the language works; build up vocabulary and learn to pronounce properly; learn how to use the language appropriately.

### Self Study & Social Program

Self study in the Multi-Media Learning Center is available for all students and there are learning resources of all kinds: audio, video, computer assisted language learning. These elements are all available for students to work independently. Some of the social program is complimentary and includes:

- \* Films
- \* Fitness Center (14:00 - 17:00)

### Super Intensive Course

30 lessons per week. Consists of the same systematic training in speaking and writing as the Intensive Course, with five additional language lessons and a smaller class size of a maximum of 8 students per class.

### Elective Program

The students who enroll in a 3-4 week session can participate in the afternoon elective lessons for the French for Business - CCIP exam course. A minimum of 5 participants is required to activate this course. These lessons are at additional cost and students may enroll directly at the school.

### ACCOMMODATIONS

#### Homestays

Many of the families who welcome Lausanne Language School students have worked with the school for many years, and there are some friendly older women who are happy to spend time with their house guests. In the centre of Lausanne, host family accommodation is mainly in small but comfortable flats. Further out of the centre, families with children live in houses and the approximate traveling time is 30 minutes. Single room with 2 meals daily is included.

### SPECIAL ACTIVITIES

Excursions and social events, which the school provides at additional cost, give students even more opportunities to make friends and to practice speaking the language. The social and excursion programs at Lausanne Language School are organized by the Migros club school, one of the important private institutions for adult education in Switzerland. Excursions cost approximately CHF 25 to CHF 40 and include: \* Lavaux Vineyards \* Geneva, UNO \* Vevey (Nestle museum) \* Grottes de Vallorbe

### TO REGISTER:

Complete the NRCSA Preregistration Form or contact the National Registration Center for Study Abroad at 823 North 2nd Street, P.O. Box 1393, Milwaukee, WI 53201 USA, or by calling (414) 278-0631; by Fax (414) 271-8884.

Check out our website at <http://www.nrcsa.com>  
or e-mail us at [study@nrcsa.com](mailto:study@nrcsa.com)

# ALL NRCSA PROGRAMS INCLUDE:

- ✓ Foreign language immersion classes
- ✓ Small interactive group and/or one-on-one instruction
- ✓ Culture program integrated into conversation classes, activities
- ✓ Meet-the-People interaction at school, homestays, & community events
- ✓ Orientation covering attractions, how to, health, safety, entertainment
- ✓ Academic assessments, placement-exit tests, Achievement Certificate
- ✓ Lodging (reduced fee if no lodging needed)
- ✓ Meals and/or cooking facilities at most centres
- ✓ Insurance: medical and accident - see below
- ✓ Emergency Hotline staffed 24 hours/day - see below
- ✓ Housing Coordinator familiar with area homestays, apartments, hotels
- ✓ Activity Coordinator facilitates transfers, cultural/social activities, tours
- ✓ Program Director experienced working with foreign participants
- ✓ Qualified, experienced, and certified educators
- ✓ Weekly proficiency goals and progress assessments
- ✓ Planning and Orientation materials
- ✓ International Ambiance, participants from around-the-world welcome
- ✓ Telecom assistance, web/e-mail access, usually on-site
- ✓ Local taxes for included services
- ✓ 24:7 Culture Immersion w/ native speakers: class, homestay, community
- ✓ **ALL NRCSA PROGRAMS INCLUDE the following INSURANCE\***

ACCIDENT INSURANCE up to \$10,000    SICKNESS INSURANCE up to \$10,000

EMERGENCY MEDICAL EVACUATION up to \$25,000

EMERGENCY REUNION up to \$5,000

REPATRIATION up to \$7,500

LIFE INSURANCE \$5,000

plus

**24 HOUR EMERGENCY WORLDWIDE MULTI-LINGUAL TELEPHONE ASSISTANCE**

## MANY ALSO OFFER

- ✓ **Tours:** cultural visits, day and weekend fieldtrips
- ✓ **Art:** classes/workshops, craft, dance, theater, fashion, music, photo
- ✓ **Humanities:** culture, area studies, hist, lit, gov't, educ, comm, plus...
- ✓ **Health:** golf, swimming, tennis, diving, skiing, riding, plus...
- ✓ **Special:** vocabulary classes tailored to your professional needs
- ✓ **Lodging:** homestay, apartment, dorm, hotel, special diet
- ✓ **Food:** home cooking, cooking classes, dine-around, wine tasting
- ✓ **Family:** services, daycare, child classes, community services
- ✓ **Teacher:** training, workshops, practicums, practice teaching, ECH
- ✓ **Teen:** camps and youth programs (including experiential)
- ✓ **University:** credit, undergraduate and graduate
- ✓ **Professional:** development credit in many fields, licensure, CEU
- ✓ **Volunteer:** medical, social service, ecology, teach plus...
- ✓ **Internships:** business, media, arts, eco, tourism, computer, plus...
- ✓ **Business:** classes, visits, networking, executive support services
- ✓ **Peer-to-Peer:** share interests, network by profession or hobby
- ✓ **Current Events & Professional Workshops, Holiday Courses**
- ✓ **Distance** educ liaison service, independent studies, research assist
- ✓ **Free** books and course materials. Return at end of studies
- ✓ **Free** airport transfers and internet access
- ✓ **Assessment** reports for attendance, progress, acculturation if needed
- ✓ **Medical:** professional training, law, social work, sciences etc.

\* If you have a problem while studying abroad, call the 24 hour hotline! Call Any Time from Anywhere! Medical or travel emergencies, legal or medical or embassy referrals, lost passport or luggage, emergency message relay, coordinating emergency prescription replacement or cash transfer, emergency translations, 24-hour medical monitoring. Problems seldom occur, but when they do, it is nice to know insurance and worldwide assistance are included in your cost for study dates prepaid through NRCSA as reflected on your NRCSA confirmation. Additional optional insurance available upon request. Refer to the certificate for specific terms, conditions and other details regarding benefits, limitations, eligibility and exclusions of this plan. Questions? Contact NRCSA: Tel: 414-278-0631 ... E-Mail: [info@nrcca.com](mailto:info@nrcca.com) ... Web: <http://www.nrcca.com>

For Questions, Concerns, or Registration, Contact NRCSA  
National Registration Center for Study Abroad \* Box 1393, Milwaukee WI 53201 USA  
Tel 414-278-0631 \* Fax 414-271-8884 \* [www.nrcca.com](http://www.nrcca.com) \* [info@nrcca.com](mailto:info@nrcca.com)  
Since 1968 \* Language-Culture Immersion Worldwide \* Start Weekly \* All Ages \* Credit, CEU or Enrichment