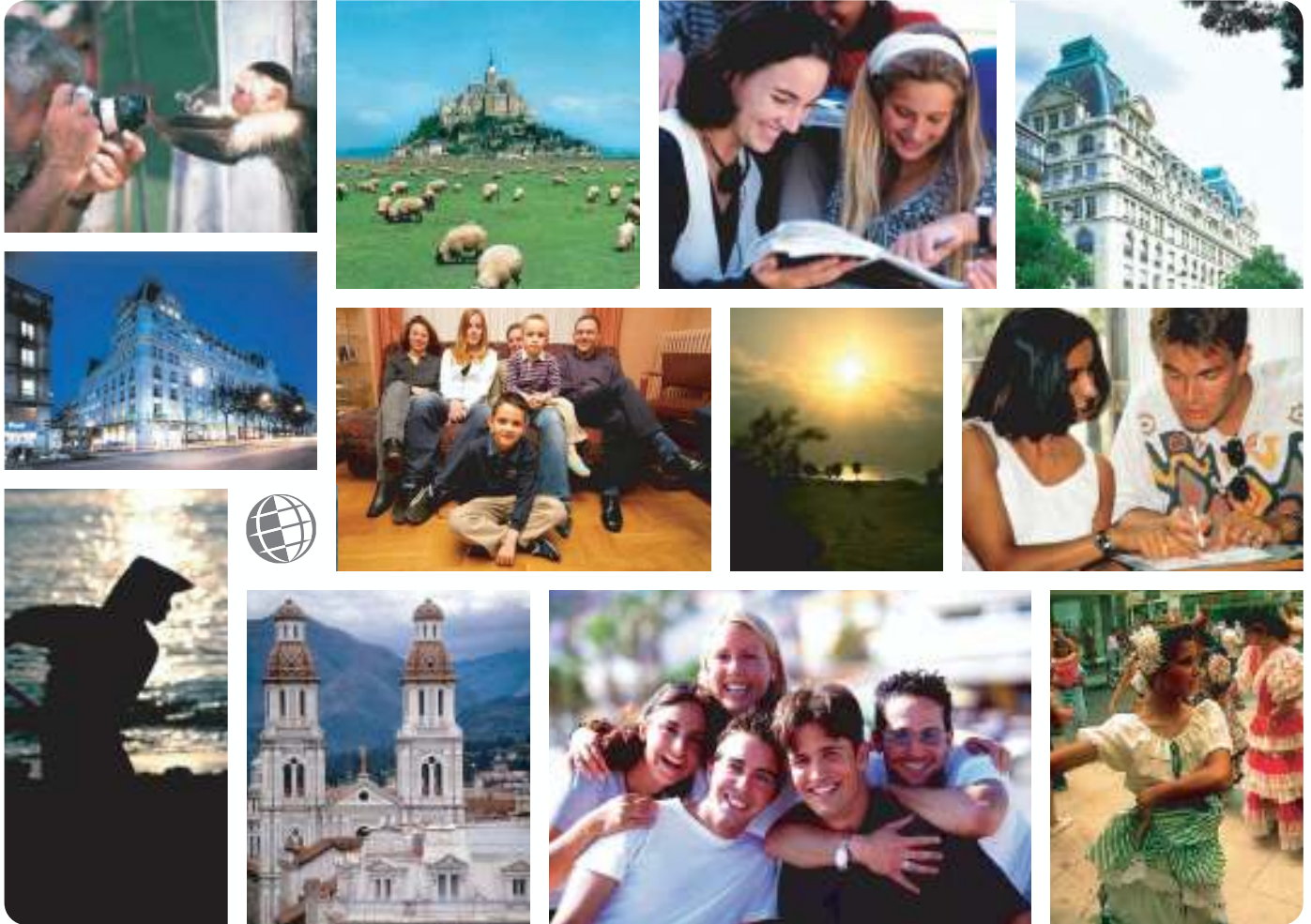


*Live the Language
Learn the Culture*

Foreign Language and Cultural Immersion Since 1968
**NATIONAL REGISTRATION CENTER
FOR STUDY ABROAD**



Japan 2008-2009

For more information please visit: www.nrca.com

NRCSA is a proud member of:



National Registration Center for Study Abroad
PO Box 1393 Milwaukee, Wisconsin 53201 USA
Tel: (414) 278-0631 Email: study@nrca.com

National Registration Center for Study Abroad (NRCSA)

P.O. Box 1393, Milwaukee, WI 53201 USA. Tel. 414 278 0631 Fax. 414 271 8884



Learn the Culture  Live the Language  Since 1968

KYOTO INTERNATIONAL CENTER – KYOTO, JAPAN

ABOUT THE SCHOOL AND THE CITY

Kyoto International Center of Languages offers Japanese at three basic levels and at two intermediate levels in a ten-week regular course and a four-week summer course. It also offers a six-month intensive course at four levels. In keeping with Japan's dedication to education (current literacy rate is 99 percent), the Kyoto Center offers a library that provides books and audio tapes.

Kyoto International Center of Languages was recognized as an accredited school by the immigration Department of the Ministry of Justice in 1981, and as an intermediary for immigration-related procedures in 1987. In 1989, the same year as the establishment of the Association for the Promotion of Japanese Language Education, Kyoto Center received certification as an educational institution for Japanese language. All teaching staff meet the requirements of the Association.

It is said that the former capital of Japan, Kyoto, embodies the essence of the Japanese spirit. Located on south-central Honshu Island where it is cradled by mountains, Kyoto has been a center for art and culture in Japan for the last twelve centuries. The city's history is long, but Kyoto is at the same time forward-looking and well known for its new innovations. The people (population 1,480,000) and city have a special pride unique in Japan.

ABOUT THE PROGRAM

Intensive 6 Month Term

This Term is designed for those coming to Japan for the purpose of studying Japanese. Students who complete this course enter schools of higher education in Japan, or use their higher level of ability in Japanese to pursue their research and/or business.

The course is offered at five different levels: two basic, two intermediate and one advanced level. The curriculum of each level is designed according to the students' ability. Regardless of the level, however, all classes are taught entirely in Japanese. There is a maximum of 18 students per class, with 160 students in the entire program.

Class assignments are determined at the beginning of each term by the results of a written placement test and an interview test, with some consideration given to prior Japanese language education. Classes are scheduled from 9:00 to 12:30, Monday through Friday.

Summer Intensive Course

This four week course is designed for students seeking conversational proficiency and a deeper understanding of the Japanese language in a short period of time. Classes are scheduled from 9:00 to 12:30, Monday through Friday. A total of 8 levels are available: three basic, three intermediate and two advanced. There is a maximum of 13 students per class, with 120 students in the entire program.

The basic level classes are centered around oral practice and drill work, designed to enable the students to master the necessary patterns and expressions used in everyday conversation. In addition to the spoken language, reading and writing of the Hiragana and Katakana syllabaries are taught, as well as approximately 300 Kanji characters.

In the intermediate levels students learn and practice to distinguish and use words and expressions in accordance with specific situations as well as reading comprehension of simple sentences.

In the advanced levels students practice conversations in which they are expected to explain and support their opinions. Speech practice and written compositions supplement the program.

Please Note: Applications and tuition fees for the Summer Intensive Japanese Course should be submitted no later than 3 months in advance of the program start date.

ACCOMMODATIONS

Homestay with 2 meals a day, for students studying full time in the Intensive Course or Summer course. If students would like to stay with Japanese families, they must make their request at least 2 months before arrival.

Guesthouse & Business Hotel accommodations near the Center are available upon request and at additional cost.

SPECIAL ACTIVITIES

Cultural Activities

Kyoto Center offers opportunities to see traditional Japanese events and various kinds of activities, to help students better understand Japanese culture and society.

TO REGISTER:

Complete the NRCSA Preregistration Form or contact the National Registration Center for Study Abroad at 823 North 2nd Street, P.O. Box 1393, Milwaukee, WI 53201 USA, or by calling (414) 278-0631; by Fax (414) 271-8884.

Check out our website at <http://www.nrca.com>
or e-mail us at study@nrca.com

Program & Admission Information - Kyoto, Japan

Programs

Summer Intensive Course This four week course is designed for students seeking conversational proficiency and a deeper understanding of the Japanese language in a short period of time. Classes are scheduled from 9:00 to 12:30, Monday through Friday. A total of 8 levels are available: three basic, three intermediate and two advanced. There is a maximum of 15 students per class, with 120 students in the entire program.

The basic level classes are centered around oral practice and drill work, and are designed to enable the students to master the necessary patterns and expressions used in everyday conversation. In addition to the spoken language, reading and writing of the Hiragana and Katakana syllabaries are taught, as well as approximately 300 Kanji characters.

In the intermediate levels students learn and practice how to distinguish and use words and expressions in accordance with specific situations. Students will also learn how to read and comprehend simple sentences.

In the advanced levels students practice conversations in which they are expected to explain and support their opinions. Speech practice and written compositions supplement the program.

Please Note: Applications and tuition fees for the Summer Intensive Japanese Course should be submitted no later than 3 months in advance of the program start date.

Intensive 6 Month Term The Intensive 6 Month Term is designed for those coming to Japan for the purpose of studying Japanese. Students who complete this course enter schools of higher education in Japan, or use their higher level of ability in Japanese to pursue their research and/or business either in their home countries or in Japan.

The course is offered at five different levels: two basic, two intermediate and one advanced level. The curriculum of each level is designed according to the students' ability. Regardless of the level, however, all classes are taught entirely in Japanese. There is a maximum of 18 students per class, with 240 students in the entire program. PLEASE NOTE: Students must possess a post beginner level in Japanese to register for 6 Month Term.

Class assignments are determined at the beginning of each term by the results of a written placement test and an interview test, with some consideration given to prior Japanese language education. Classes are scheduled from 9:00 to 12:30, Monday through Friday.

Intensive 6 Month Term Course Descriptions

The curriculum of each level is designed according to the students' ability. As all classes are taught entirely in Japanese, individuals interested in 6 Month Term programs must hold a post beginner language proficiency level.

* Basic Level 1 - 6 Months

- o Students learn basic sentences through practice acquired in the form of questions and answers.
- o Speaking ability on essential matters for carrying out daily activities using these patterns and vocabulary is learned.
- o Video programs and audio tapes are frequently used to improve hearing ability; students come to understand the contents of the program accurately.
- o Students learn to understand relatively short and simple sentences composed of patterns already learned as well as to write about everyday situations using Kanji and the Kana syllabaries.
- o Students learn Hiragana and Katakana as well as about 550 Kanji characters.
- o Students completing this course move up to Intermediate Level 1 and are approximately at the same level as level-3 in the Japanese Language Proficiency Test.

* Basic Level 2 - 6 Months

- o Designed for students who, having accumulated approximately 200 hours of language class outside of Japan, have a good foundation in the basic grammatical structures and patterns of the language, but are still unable to sufficiently apply their knowledge.
- o Beginning with a review of the material that students studied in their own countries, the practice drills and exercises are aimed at enabling the students to actually use what they know.
- o The introduction of new expressions and patterns, and the practicing of shortened and colloquial forms is also an important part of the curriculum.



Programs

Summer Intensive
Course
Intensive 6 Month
Term

Admissions &
Academic Credit
Visa

Activities

Cultural Activities

Comments

"My Japanese definitely improved and I also learned more about interacting with people with different backgrounds."

University Student, San Francisco, CA

"I had a great host family. It was a great city (Kyoto). I had fun classmates/good teachers and I loved living in Japan."

Consultant from Germany

"KICL offered an outstanding academic program. My time in Kyoto also allowed me an opportunity to travel to many places over a month rather than a quick stopover for a day or two. Additionally, my home-stay allowed me to interact with other college age foreign students in which Japanese was the only common language."

US Marine from Japan

"I had a wonderful time being a part of a Japanese family for a month. I feel like I really had the chance to come to understand how life is different at the personal level."

University Student, Anchorage, AK

- o Students are taught about 600 Kanji characters and are expected to learn to read and understand full, complete sentences.

- o Students completing this course move up to either Intermediate Level 1 or 2.

* Intermediate Level 1 - 6 Months

- o Students learn advanced expressions using reading materials for foreign students of Japanese, learning to grasp the contents of relatively long and complicated passages.

- o Students learn to describe their opinion using complex patterns.

- o Students are taught to be able to distinguish style in various situations found in daily life.

- o Approximately 800-1,000 Kanji are taught.

- o Students completing this course should be able to pass level-2 in the Japanese Language Proficiency Test.

* Intermediate Level 2 - 6 Months

- o Acquisition of a sufficient level of Japanese for entering a university and for following special research interests in Japan. For this purpose, students learn a wide range of vocabulary and come to understand the logical structure of sentences and to acquire the ability to read rapidly.

- o Various topics concerning social problems are discussed and students summarize the main points of the debate in simple sentences.

- o Students practice exercises for the Japanese Language Proficiency Test, level-1 (Advanced).

- o Students passing this course should be able to pass level-1 in the Japanese Language Proficiency Test.

* Advanced Level - 6 Months

- o This advanced level is designed for students who already have a sufficient working knowledge of Japanese but who need a high level of ability in Japanese to pursue their research and/or business in Japan.

- o Reading ability is acquired in order to understand extensive topics as well as paying attention to literary expressions.

- o Students will survey current and professional topics, exchange opinions and information, and summarize contents.

Admissions & Academic Credit

Students age 18 years and older are welcome regardless of educational background, occupation or nationality, however, applicants must have completed at least 12 years of formal education (completed high school). No previous knowledge of Japanese is required except where otherwise indicated. Placement of those who have already studied Japanese will be based on a test and completed by the student prior to the beginning of the course. An informal interview will also be used.

Students desiring credit for their study should contact their home school or request the NRCSA Credit Fact Sheet. Generally, U.S. universities consider 15 hours of study to be equal to 1 semester credit. Students wishing academic credit should furnish details of past academic work before arrival.

For general information on academic credit, [please click here](#).

Visas When students in the Intensive Course enter Japan, they are given the status of residence "Pre-college Student" for studying Japanese and students are permitted to stay for a period of 6 months from the time of arrival. Students can extend their period of stay every 6 months. In general, the period which students can stay in Japan for the purpose of studying Japanese is a maximum of 2 years.

Since the school is recognized by the Immigration Department, students enrolled at the school are not required to appear in person at the Immigration Office to apply for permission to extend their period of stay at the end of each school term, but can do so through the school's main office. Students can also apply for reentry permits at the school to leave Japan for home countries or other countries temporarily for a short period during a summer or winter vacation.

Students of the Summer Intensive Course cannot obtain a visa for studying Japanese. They can, however, enter Japan on a temporary visitor visa (tourist visa) which is issued upon arrival. For students from those countries with visa exemption agreements with Japan (including the U.S.), no visa is necessary to enter Japan on a short term basis. Currently, Japan has such agreements with approximately 50 countries. For more detailed information concerning visa application requirements and procedures, please make inquiries at the Japanese Consulate or Embassy in your home country.

ALL NRCSA PROGRAMS INCLUDE:

- ✓ Foreign language immersion classes
- ✓ Small interactive group and/or one-on-one instruction
- ✓ Culture program integrated into conversation classes, activities
- ✓ Meet-the-People interaction at school, homestays, & community events
- ✓ Orientation covering attractions, how to, health, safety, entertainment
- ✓ Academic assessments, placement-exit tests, Achievement Certificate
- ✓ Lodging (reduced fee if no lodging needed)
- ✓ Meals and/or cooking facilities at most centres
- ✓ Insurance: medical and accident - see below
- ✓ Emergency Hotline staffed 24 hours/day - see below
- ✓ Housing Coordinator familiar with area homestays, apartments, hotels
- ✓ Activity Coordinator facilitates transfers, cultural/social activities, tours
- ✓ Program Director experienced working with foreign participants
- ✓ Qualified, experienced, and certified educators
- ✓ Weekly proficiency goals and progress assessments
- ✓ Planning and Orientation materials
- ✓ International Ambiance, participants from around-the-world welcome
- ✓ Telecom assistance, web/e-mail access, usually on-site
- ✓ Local taxes for included services
- ✓ 24:7 Culture Immersion w/ native speakers: class, homestay, community
- ✓ **ALL NRCSA PROGRAMS INCLUDE the following INSURANCE***

ACCIDENT INSURANCE up to \$10,000 SICKNESS INSURANCE up to \$10,000

EMERGENCY MEDICAL EVACUATION up to \$25,000

EMERGENCY REUNION up to \$5,000

REPATRIATION up to \$7,500

LIFE INSURANCE \$5,000

plus

24 HOUR EMERGENCY WORLDWIDE MULTI-LINGUAL TELEPHONE ASSISTANCE

MANY ALSO OFFER

- ✓ **Tours:** cultural visits, day and weekend fieldtrips
- ✓ **Art:** classes/workshops, craft, dance, theater, fashion, music, photo
- ✓ **Humanities:** culture, area studies, hist, lit, gov't, educ, comm, plus...
- ✓ **Health:** golf, swimming, tennis, diving, skiing, riding, plus...
- ✓ **Special:** vocabulary classes tailored to your professional needs
- ✓ **Lodging:** homestay, apartment, dorm, hotel, special diet
- ✓ **Food:** home cooking, cooking classes, dine-around, wine tasting
- ✓ **Family:** services, daycare, child classes, community services
- ✓ **Teacher:** training, workshops, practicums, practice teaching, ECH
- ✓ **Teen:** camps and youth programs (including experiential)
- ✓ **University:** credit, undergraduate and graduate
- ✓ **Professional:** development credit in many fields, licensure, CEU
- ✓ **Volunteer:** medical, social service, ecology, teach plus...
- ✓ **Internships:** business, media, arts, eco, tourism, computer, plus...
- ✓ **Business:** classes, visits, networking, executive support services
- ✓ **Peer-to-Peer:** share interests, network by profession or hobby
- ✓ **Current Events & Professional Workshops, Holiday Courses**
- ✓ **Distance** educ liaison service, independent studies, research assist
- ✓ **Free** books and course materials. Return at end of studies
- ✓ **Free** airport transfers and internet access
- ✓ **Assessment** reports for attendance, progress, acculturation if needed
- ✓ **Medical:** professional training, law, social work, sciences etc.

** If you have a problem while studying abroad, call the 24 hour hotline! Call Any Time from Anywhere! Medical or travel emergencies, legal or medical or embassy referrals, lost passport or luggage, emergency message relay, coordinating emergency prescription replacement or cash transfer, emergency translations, 24-hour medical monitoring. Problems seldom occur, but when they do, it is nice to know insurance and worldwide assistance are included in your cost for study dates prepaid through NRCSA as reflected on your NRCSA confirmation. Additional optional insurance available upon request. Refer to the certificate for specific terms, conditions and other details regarding benefits, limitations, eligibility and exclusions of this plan. Questions? Contact NRCSA: Tel: 414-278-0631 ... E-Mail: info@nrcca.com ... Web: <http://www.nrcca.com>*

For Questions, Concerns, or Registration, Contact NRCSA
National Registration Center for Study Abroad * Box 1393, Milwaukee WI 53201 USA
Tel 414-278-0631 * Fax 414-271-8884* www.nrcca.com * info@nrcca.com
Since 1968 * Language-Culture Immersion Worldwide * Start Weekly * All Ages * Credit, CEU or Enrichment

PREREGISTRATION FORM – NRCSA PROGRAMS

1. Complete & send to NRCSA, P.O. Box 1393, Milwaukee, WI 53201, USA • Tel. (414) 278-0631 • Fax (414) 271-8884 • Web: www.nrca.com
2. Enclose a non-refundable deposit/registration fee of \$140 per person, per program, payable to NRCSA (\$40 registration fee & \$100 program deposit applied towards the program costs).
3. Register early. Add \$40 per person late enrollment fee if paying in full within 40 days of departure. Within 20 days, payments by certified check.
4. Credit Cards may be used for deposits (see "H" below). NRCSA street address for overnight deliveries is 207 East Buffalo Street, Suite 610, Milwaukee, WI 53202 USA. You are welcome to photocopy this form. Please send separate form for each school if taking multiple programs.

A. Name(s) _____ Sex _____ Birthdate _____ Citizenship _____
Please print
 _____ Employer _____ Occupation _____
If student, school attending and year

Street: _____ Tel. Home: _____
Street address (not P.O. Box) where someone can sign for documents sent to you.
 City/State/Zip: _____ Tel. Work: _____
 Fax: _____
 E-mail: _____

In Emergency, notify: _____
(Name, Address, Phone)

B. BACKGROUND: _____
Describe your background in the course you're taking abroad. Check your ability level: Beginner Post Beginner
 Intermediate Advanced

C. LODGING: _____
Schools will try (cannot guarantee) to meet them. Special Diet (may be available) at additional cost.

D. GOALS: _____

E. INSURANCE: Includes prepaid study dates. To extend coverage up to 30 days before/after study dates, add \$5/day or \$19/week and advise dates.

- Check Preferences.**
 Single Share Twin Other: _____
 Yes Smoking No Smoking Either
 Yes Pets No Pets Either
 Yes Children No Children Either
PREFER: Homestay Involvement Freedom to Come/Go
ARE YOU? Quiet Outgoing Frequent Traveler
OBJECTIVES: Enrichment Academic Credit Job Related
HOBBIES: Reading Music Cooking Jogging Sports

F. PROGRAM INFORMATION	School/Center
Program Name (use title from Dates & Fees)	City/Country
Date: Start Program	Date: Start Lodging (most start day before)
No. of hours day/week	No. of weeks attending
Disabilities/Allergies/Health Problems	2nd Choice Program
How did you learn about NRCSA?	Social Security Number
Options (see program for choices)	
Your Signature (if you are under age 18, both parents must also sign)	

INSURANCE INCLUDED for PRE-PAID STUDY DATES

ACCIDENT / MEDICAL INSURANCE UP TO \$10,000

EMERGENCY MEDICAL EVACUATION UP TO \$25,000

EMERGENCY REUNION UP TO \$5,000

REPATRIATION UP TO \$7,500

LIFE INSURANCE \$5,000

24 HOUR EMERGENCY WORLDWIDE-MULTI-LINGUAL TELEPHONE ASSISTANCE

For More Info: <http://www.nrca.com/INS24hrHotline.html>

H. CREDIT CARDS:

For program deposit only (**not final payment**) check:
 VISA Mastercard American Express Amount Charged \$ _____

Card Number (13 or more numbers) Exp Date

SIGNATURE (as on card) PRINT name (as on card)

CHANGE FEES of at least \$35 apply for each change you make. Some "changes" may result in cancellation fees.

CANCELLATIONS are effective the day received in writing by NRCSA in Milwaukee. All payments less \$140 per program fully refundable up to 60 days prior to departure. For cancellations within 60 days of departure, \$250 per person is not refundable; within 40 days of departure, less 50% of program cost or \$300 per person (whichever is greater); within 14 days of departure, 100% of program cost is non refundable. Airline cancellation penalties, if any, are in addition to those outlined above. Cancellation penalties are per person, per program. Medical, baggage (above that included) and cancellation insurance is strongly recommended. Attach a note if you have a medical condition or Rx which the school/center should know about.

CONDITIONS: Each institution listed herein is independent of the National Registration Center for Study Abroad (hereinafter referred to as NRCSA, controls, and will periodically make changes in the program. Classes may fill, be changed, or dropped by the sponsoring academic institutions. NRCSA is a division of Mibar Ltd. and is not responsible for these changes or other actions beyond its control such as strikes, postal delays or loss, mechanical breakdowns, weather, government actions, delay or acts/omissions of suppliers. NRCSA may make changes or substitutions or cancel any program. In the event of entire program cancellation by NRCSA, liability is limited to refunding all monies paid to NRCSA for said program. Passengers electing not to use portions of a program shall not be entitled to a refund. No agent or representative of NRCSA shall have the right to alter the provisions listed herein. Costs based on tariffs and exchange rates effective the date of printing of this material, and are subject to change. Additional costs resulting from such change will be paid by the participant. Registrations are valid when accepted by NRCSA in Milwaukee. The passage contract used by the airline, when issued, is the sole agreement between it and you. Photographs of or statements by participants may be used by NRCSA. NRCSA, group leaders or foreign coordinators, at their discretion, may get medical assistance for participants, or place them in a hospital, or fly them back to the U.S. for medical treatment. All costs related to medical treatment or evacuation will be paid by the participant. As visitors you are expected to adhere to foreign rules and customs. If the foreign staff feels you are not adhering to these rules and customs, your participation in the program shall terminate immediately without refund whatsoever. A "homestay" is defined as living with a local person(s) in the foreign country and may not be multi generational, multinational, etc. It is the responsibility of the participant to have required proof of citizenship and visa(s) if applicable - check with the consulate of the country(s) you will be visiting.

INFORMATION USE: Information provided to NRCSA will be shared with participating organizations to facilitate your registration.

NOTE: Classes canceled in honor of local holidays are not made up. Foreign Language schools use placement tests. If there is no group at your level, smaller group or tutor classes may be substituted with fewer hours per week. Classes are conducted entirely in the target language. See **Fast Facts Guide** for more information.