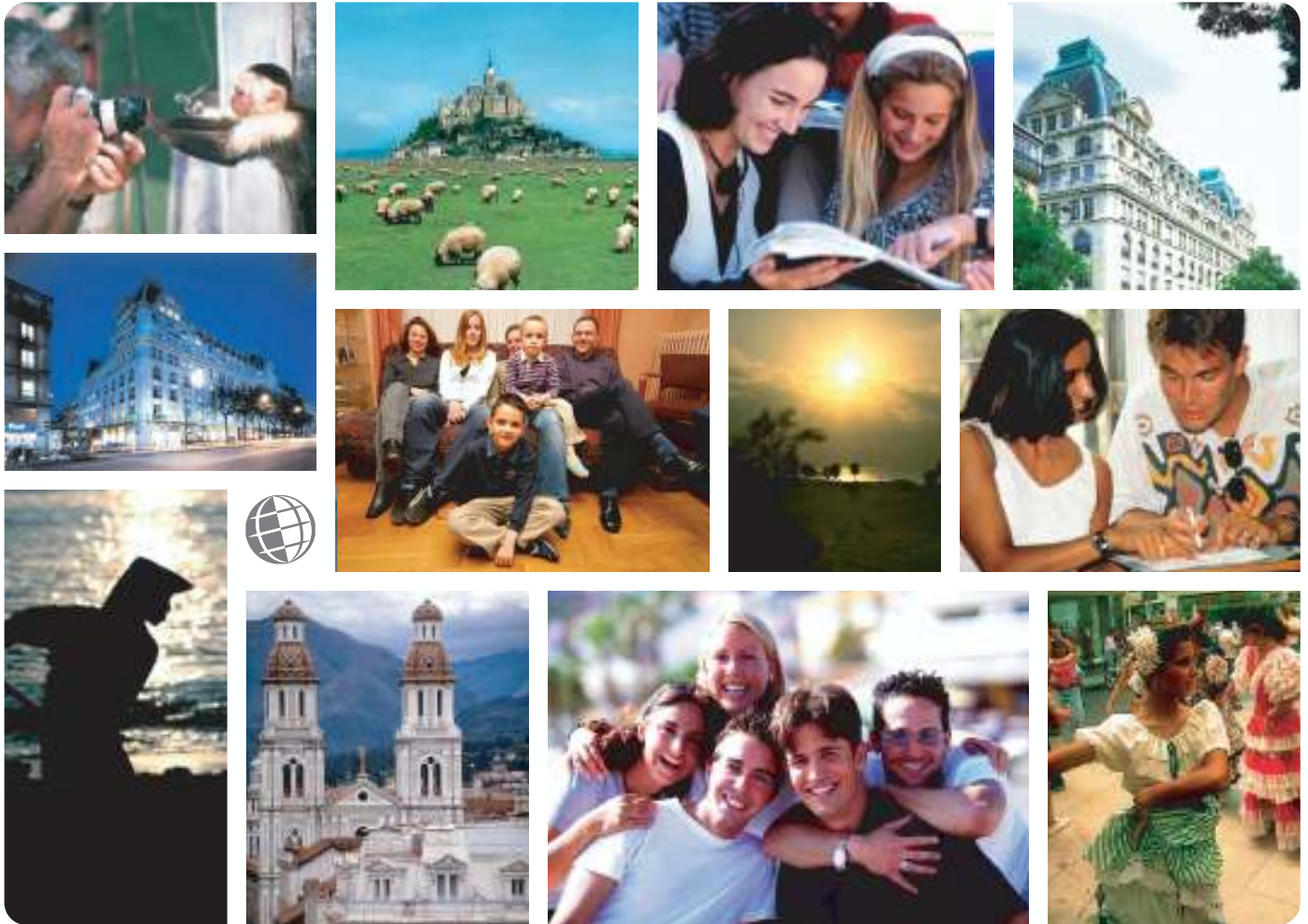


*Live the Language
Learn the Culture*

Foreign Language and Cultural Immersion Since 1968
**NATIONAL REGISTRATION CENTER
FOR STUDY ABROAD**



Spain 2008-2009

For more information please visit: www.nrca.com

NRCSA is a proud member of:



National Registration Center for Study Abroad
PO Box 1393 Milwaukee, Wisconsin 53201 USA
Tel: (414) 278-0631 Email: study@nrca.com

National Registration Center for Study Abroad (NRCSA)

P.O. Box 1393, Milwaukee, WI 53201 USA. Tel. 414 278 0631 Fax. 414 271 8884



Learn the Culture  Live the Language  Since 1968

INTERNATIONAL HOUSE – BARCELONA, SPAIN

ABOUT THE SCHOOL AND THE CITY

International House was founded in 1972 and has since grown into a major centre for language teaching, teacher training and related activities. There are three main areas of activity in the school: 1) Teaching Spanish to students from all over the world; 2) Teaching other languages (English, German, and French) to the local population; 3) Training teachers of Spanish and English. International House in Barcelona currently has around 1,200 local people studying English, German or French in the school, so there is opportunity for students of Spanish to meet native Spanish speakers.

Barcelona is one of the most beautiful and exciting cities in the world. It has a huge number of attractions including a city centre which retains its medieval street plan, some stunning modernist architecture including several buildings by Gaudi, dozens of museums including one dedicated to Picasso, another to Miro and one to Barcelona's famous football club.

ABOUT THE PROGRAM

The main objective of the International House's Spanish courses is to improve the student's communicative skills. The emphasis is on classroom activities and the development of the student's ability to speak and understand spoken Spanish. Attention is also paid to grammar, vocabulary, reading and writing skills, and a wide variety of materials. International House offers a wide range of levels: Beginners, Elementary, Intermediate 1, Intermediate 2, Intermediate 3, Advanced 1, Advanced 2, Advanced 3, Proficiency.

Intensive Group Course

Group 12, 20 hours per week. IH Barcelona's Intensive Group Course consists of 4 hours per day of Spanish, from Monday to Friday. Courses are offered at all levels from complete beginners to very advanced. There is a maximum of 12 students per group and the minimum age for this course is 16 years old.

Intensive Group & Culture Course

Group 12 & Culture, 26 hours per week. Low Intermediate Level Required, except for the course in Spanish Literature where the minimum level required is Upper Intermediate. This course combines the Intensive Group Course of 4 hours per day of Spanish, Monday to Friday, with 1.50 hours per day of Culture Classes, Tuesday to Friday.

Business Spanish Course

30 hours per week. Upper Intermediate Level Required. International House in Barcelona offers courses in Business Spanish which consist of 6 hours of Spanish per day for 4 weeks. Students attend a Group Intensive Course and, after lunch, students take an additional 2 hours of class focusing on Business Spanish.

Executive Spanish Course

30 Tutor hours per week. This is a specialized Spanish language training program which features an intensive study including 30 hours of one-to-one Spanish, working lunches with teachers, guided individual project work, extensive use of up-to-date and authentic materials, two dinners with teachers, and an optional evening social program.

Introductory Teacher Training Course

3 weeks, 35 hours/week. The Introductory Teacher Training Course at International House is for fluent Spanish speakers (native and non-native) who would like to learn how to teach Spanish to foreigners. Duration is 3 weeks and consists of a total of 105 hours. Covers theoretical and practical aspects of teaching.

Teacher Methodology & Culture Course

2 weeks, 30 hours/week. This course is designed for non-native teachers of Spanish. Teachers are given the opportunity to refresh and develop their teaching skills and broaden their knowledge of Spanish culture. The course is 2 weeks and consists of 60 hours per week. Spanish language, techniques for pronunciation, cultural activities (fiestas, costumbres, diversidad...), and special practice with International House's teaching staff are included in the course.

Teen Summer Program: Ages 14-17-Tarragona Only

Includes 15 hours per week of Spanish plus social activities. The Teen Program takes place in Tarragona, a pleasant coastal resort city approximately 100 km south of Barcelona. The course fee includes airport transfer service on arrival and departure, 3 hours of Spanish classes per day, host family accommodation in single or double rooms with 3 meals daily, a full social program, and a local bus pass

ACCOMMODATIONS

International House can arrange accommodation to suit the needs of all students, either with Spanish families, in University Residences, in apartments or in hotels.

SPECIAL ACTIVITIES

International House organizes a varied program of social activities for Spanish students. All costs of the social program are included in the course fees, except when an excursion in a coach bus.

TO REGISTER:

Complete the NRCSA Preregistration Form or contact the National Registration Center for Study Abroad at P.O. Box 1393, Milwaukee, WI 53201 USA, or by calling (414) 278-0631; by Fax (414) 271-8884.

Check out our website at <http://www.nrca.com>
or e-mail us at study@nrca.com

Programs & Activities - Barcelona, Spain

Programs

The main objective of the Spanish courses is to improve the student's communicative skills. The emphasis of classroom activities is therefore the development of the student's ability to speak and understand spoken Spanish. For this reason, classes are conducted entirely in Spanish and students are given plenty of opportunity to practice the sort of language they are likely to need outside the classroom. While the atmosphere in the classroom is generally relaxed and informal, students should be prepared to work hard and participate fully.

Due attention is also paid to grammar, vocabulary, reading and writing skills, and a wide variety of materials is used including published materials from many different sources as well as materials which have been written by the school's own teachers. All materials that the students need to work with are provided free of charge. This includes a Spanish Grammar book which is given to students at the beginning of their course. Students who attend private classes will have course materials designed specifically to meet their particular needs.

The teaching and the course program are carefully supervised by the Director of Studies who is also responsible for ensuring that students are placed in the appropriate level and that their progress is satisfactory. On the first day of the course, each student with any prior knowledge of Spanish is given both an oral and a written entry test so that their level of ability can be ascertained and they can be placed in the most appropriate group.

A wide range of levels are offered, from absolute beginners to very advanced. Students will normally need at least 40 hours tuition at any one level before advancing to the next course. The names given to each level are as follows: Beginners, Elementary, Intermediate 1, Intermediate 2, Intermediate 3, Advanced 1, Advanced 2, Advanced 3, Proficiency.

Intensive Group Course

Group 12, 20 hours per week. The Intensive Group Course consists of 4 hours per day of Spanish, from Monday to Friday. Classes take place from 09.30 to 13.30, with a 20 minute break for coffee taken halfway through the morning. Students may enroll for as many weeks as they like (minimum 2 weeks).

Intensive Group Courses are offered at all levels from complete beginners to very advanced. There is a maximum of 12 students per group and the minimum age for this course is 16 years old.



Intensive Group & Culture Course Group 12 & Culture, 26 hours per week. Low Intermediate level required, except for the course in Spanish Literature (class number 4, see below) where the minimum level required is Upper Intermediate. This course combines the Intensive Group Course of 4 hours per day of Spanish from 09.30 to 13.30, Monday to Friday, with 1.50 hours per day of culture classes from 14.30 to 16.00, Tuesday to Friday. The timetable allows for a one hour lunch (13.30 to 14.30) and for students to participate in the social program which begins at 16.00.

Each culture class lasts one week and looks at a different aspect of Spanish culture. Course subjects are as follows:

- Spanish art in the 20th Century: a look at a range of artistic styles including those of Picasso, Dali, Miro and Tapies.
- The Spanish media: Press, Radio, Television & Internet and the language that is characteristic of each media.
- The Spanish Civil War: the causes, most important episodes and many consequences of this tragedy.
- An introduction to the History of Spanish Literature from the Middle Ages to the present day.
- Flamenco: a course which looks beyond the music and dance to the culture of flamenco.
- Spain's most popular fiestas: the Easter Processions, the Fallas, San Fermin, etc.
- Spain's cultural diversity: the languages, gastronomy, geography and folklore of each of Spain's regional cultures.
- Spanish social customs: students are given an insight into the Spanish way of life and invited to compare Spanish social customs with those of their own countries.

Programs

Intensive Group Course

Business Spanish Course

Intensive Group & Culture Course

Business Spanish Course

Executive Spanish Senior Course

Introductory Teacher Training Course

Admissions & Academic Credit Certificates & Exams

Activities

Social Program and Excursions

Comments

"I enjoyed the family I lived with the most. They were among some of the most wonderful people I met in Spain. Sitting down for breakfast and dinner every night, setting the table, helping with the preparation of the meals, meeting the other students who lived with the family, it really was a pleasing, engrossing and engaging - I enjoyed it immensely. Additionally, meeting and going out with other language students from all over the world was extremely fun. It was interesting to get other perspectives from around the world - especially while the World Cup was going on."

University Student, San Rafael, CA

"Barcelona in autumn is AMAZING! and the cost of living (well, compared to NYC) is so manageable."

Science Editor, New York, NY

Specific dates for each culture class are available, please contact NRCSA.

Business Spanish Course

courses designed to help students who need to use the language in their work.

The aim of these courses is to help improve student's level of competence in many typical work-related activities such as participating in meetings, using the telephone for business, negotiating and selling, making presentations, etc.

Students are also introduced to a wide range of business vocabulary and given an insight into the sort of cultural differences that they may encounter while working or doing business in a Spanish-speaking country.



Course design

The course consists of 4 hours tuition per day (from 09.30 - 13.30) for 2 or 3 weeks. Students who take the 3-week course can choose to take an exam at the end of the third week.

At the end of the course, students can take an exam which is organized by the Madrid Chamber of Commerce in conjunction with the University of Alcalá. The exams are not obligatory but students should expect a certain amount of classroom time to be spent on activities designed to help students prepare for these exams. These exams are available at two levels, Certificado Básico and Certificado Superior. The lower of the two levels (Básico) recognizes that students have a basic competence in Business Spanish which should allow them to perform routine tasks in a Business context. The second level (Superior) recognizes a more advanced level of competence and familiarity with the technical language used in the Business world. The exams are held in the school on the Saturday at the end of the course. Each exam currently costs approximately 180 to 200 Euros.

Executive Spanish

Thirty Tutor one-on-one hours per week. This is a specialized Spanish language training program which features an intensive study day from 09.00 to 18.30 including:

- * 30 hours of one-to-one Spanish
- * Working lunch with teachers every day
- * Guided individual project work
- * Extensive use of up-to-date, authentic materials.
- * Visits to Spanish companies can arranged on request.
- * Two dinners during the course with teachers.
- * Optional evening social program to be arranged by agreement.



These features combine to produce a course which provides an intensive, personalized language learning experience, enabling the course participant to make real progress in those areas which are most important to the individual concerned, while spending only a short time away from work. Each Executive Spanish Course is designed from both a level test and a detailed needs analysis; each course is therefore tailor-made for each individual student.

Example Executive Plus Course Timetable

- 09.00 - 11.00 Individual classes focusing on grammar points
- 11.00 - 11.30 Coffee break
- 11.30 - 13.30 Individual classes working on developing communication skills
- 13.30 - 15.00 Working lunch with teacher
- 15.00 - 16.00 Guided project work
- 16.00 - 16.30 Coffee break
- 16.30 - 18.30 Individual classes based on project work or visit to a local company accompanied by a teacher
- 18.30 -20.30 Rest period
- 20.30 - 22.00 Dinner with teacher or accompanied visit to the theatre or cinema.

Executive courses can start any Monday throughout the year, except during the Christmas holiday period (see Dates & Fees).

The cost includes homestay single room, breakfast daily, classes, educational materials, a reference or textbook, lunches and two evening meals with teacher. The cost of any other, optional, evening activities is not included in the fee.

Senior Course Two week course designed for students over the age of 50 who prefer to study and socialize with individuals of a similar age. The course consists of 3 hours per day of Spanish classes, which take place from 10.00 - 13.00, Monday to Friday. Classes are given in groups with a maximum of 12 students. All language proficiency levels are welcome, including complete beginners. The course also includes a special program of visits to places of interest inside the city, a lunch or dinner in one of the Barcelona's typical restaurants, and an excursion outside Barcelona on one Saturday.



Introductory Teacher Training Course

Three weeks, 35 hours/week. The Introductory Teacher Training Course is available for fluent Spanish speakers (native and non-native) who would like to learn how to teach Spanish to foreigners. This intensive course has a duration of 3 weeks and consists of a total of 105 hours. It covers both theoretical and practical aspects of teaching.



Those students who hold a university degree, have a suitably high level of Spanish (native or near-native speaker level) and who successfully complete the Introductory Teacher Training Course receive an officially recognized teaching certificate from the University of Barcelona. This certificate is also equivalent to 6 credits on the University of Barcelona's Masters course in teaching Spanish as a foreign language.

Junior Summer Program Ages 14 - 17 - Tarragona Only

[For detailed information on the Junior Summer Program, please click here.](#)

Admissions & Academic Credit

Students age 16 years and older are welcomed regardless of educational background, occupation or nationality. No previous knowledge of Spanish is required except where otherwise indicated.

Students desiring credit for their study should contact their home school or request the NRCSA Credit Fact Sheet. Generally, U.S. schools consider 15 hours of study to be equal to 1 semester credit.

For more information about academic credit in Spanish speaking countries, [please click here](#).
For general information on academic credit, [please click here](#).

Certificates & Exams

At the end of their course all students will be given a certificate, which indicates the number of hours they have studied and the level of ability they have reached.

The DELE diplomas are official diplomas given by the Spanish Ministry of Education and Science which recognize the candidate as having a certain skill level in the Spanish language. The exams are held in in May (Initial and Basic) and (Basic and Higher).

Preparation for the following DELE exams is offered at additional cost:

1. Diploma Inicial
2. Diploma Básico
3. Diploma Superior

ALL NRCSA PROGRAMS INCLUDE:

- ✓ Foreign language immersion classes
- ✓ Small interactive group and/or one-on-one instruction
- ✓ Culture program integrated into conversation classes, activities
- ✓ Meet-the-People interaction at school, homestays, & community events
- ✓ Orientation covering attractions, how to, health, safety, entertainment
- ✓ Academic assessments, placement-exit tests, Achievement Certificate
- ✓ Lodging (reduced fee if no lodging needed)
- ✓ Meals and/or cooking facilities at most centres
- ✓ Insurance: medical and accident - see below
- ✓ Emergency Hotline staffed 24 hours/day - see below
- ✓ Housing Coordinator familiar with area homestays, apartments, hotels
- ✓ Activity Coordinator facilitates transfers, cultural/social activities, tours
- ✓ Program Director experienced working with foreign participants
- ✓ Qualified, experienced, and certified educators
- ✓ Weekly proficiency goals and progress assessments
- ✓ Planning and Orientation materials
- ✓ International Ambiance, participants from around-the-world welcome
- ✓ Telecom assistance, web/e-mail access, usually on-site
- ✓ Local taxes for included services
- ✓ 24:7 Culture Immersion w/ native speakers: class, homestay, community
- ✓ **ALL NRCSA PROGRAMS INCLUDE the following INSURANCE***

ACCIDENT INSURANCE up to \$10,000 SICKNESS INSURANCE up to \$10,000

EMERGENCY MEDICAL EVACUATION up to \$25,000

EMERGENCY REUNION up to \$5,000

REPATRIATION up to \$7,500

LIFE INSURANCE \$5,000

plus

24 HOUR EMERGENCY WORLDWIDE MULTI-LINGUAL TELEPHONE ASSISTANCE

MANY ALSO OFFER

- ✓ **Tours:** cultural visits, day and weekend fieldtrips
- ✓ **Art:** classes/workshops, craft, dance, theater, fashion, music, photo
- ✓ **Humanities:** culture, area studies, hist, lit, gov't, educ, comm, plus...
- ✓ **Health:** golf, swimming, tennis, diving, skiing, riding, plus...
- ✓ **Special:** vocabulary classes tailored to your professional needs
- ✓ **Lodging:** homestay, apartment, dorm, hotel, special diet
- ✓ **Food:** home cooking, cooking classes, dine-around, wine tasting
- ✓ **Family:** services, daycare, child classes, community services
- ✓ **Teacher:** training, workshops, practicums, practice teaching, ECH
- ✓ **Teen:** camps and youth programs (including experiential)
- ✓ **University:** credit, undergraduate and graduate
- ✓ **Professional:** development credit in many fields, licensure, CEU
- ✓ **Volunteer:** medical, social service, ecology, teach plus...
- ✓ **Internships:** business, media, arts, eco, tourism, computer, plus...
- ✓ **Business:** classes, visits, networking, executive support services
- ✓ **Peer-to-Peer:** share interests, network by profession or hobby
- ✓ **Current Events & Professional Workshops, Holiday Courses**
- ✓ **Distance** educ liaison service, independent studies, research assist
- ✓ **Free** books and course materials. Return at end of studies
- ✓ **Free** airport transfers and internet access
- ✓ **Assessment** reports for attendance, progress, acculturation if needed
- ✓ **Medical:** professional training, law, social work, sciences etc.

** If you have a problem while studying abroad, call the 24 hour hotline! Call Any Time from Anywhere! Medical or travel emergencies, legal or medical or embassy referrals, lost passport or luggage, emergency message relay, coordinating emergency prescription replacement or cash transfer, emergency translations, 24-hour medical monitoring. Problems seldom occur, but when they do, it is nice to know insurance and worldwide assistance are included in your cost for study dates prepaid through NRCSA as reflected on your NRCSA confirmation. Additional optional insurance available upon request. Refer to the certificate for specific terms, conditions and other details regarding benefits, limitations, eligibility and exclusions of this plan. Questions? Contact NRCSA: Tel: 414-278-0631 ... E-Mail: info@nrcca.com ... Web: <http://www.nrcca.com>*

For Questions, Concerns, or Registration, Contact NRCSA
National Registration Center for Study Abroad * Box 1393, Milwaukee WI 53201 USA
Tel 414-278-0631 * Fax 414-271-8884* www.nrcca.com * info@nrcca.com
Since 1968 * Language-Culture Immersion Worldwide * Start Weekly * All Ages * Credit, CEU or Enrichment

PREREGISTRATION FORM – NRCSA PROGRAMS

1. Complete & send to NRCSA, P.O. Box 1393, Milwaukee, WI 53201, USA • Tel. (414) 278-0631 • Fax (414) 271-8884 • Web: www.nrca.com
2. Enclose a non-refundable deposit/registration fee of \$140 per person, per program, payable to NRCSA (\$40 registration fee & \$100 program deposit applied towards the program costs).
3. Register early. Add \$40 per person late enrollment fee if paying in full within 40 days of departure. Within 20 days, payments by certified check.
4. Credit Cards may be used for deposits (see "H" below). NRCSA street address for overnight deliveries is 207 East Buffalo Street, Suite 610, Milwaukee, WI 53202 USA. You are welcome to photocopy this form. Please send separate form for each school if taking multiple programs.

A. Name(s) _____ Sex _____ Birthdate _____ Citizenship _____
Please print

_____ Employer _____ Occupation _____
If student, school attending and year

Street: _____ Tel. Home: _____
Street address (not P.O. Box) where someone can sign for documents sent to you.

City/State/Zip: _____ Tel. Work: _____

_____ Fax: _____

_____ E-mail: _____

In Emergency, notify: _____
(Name, Address, Phone)

B. BACKGROUND: _____
Describe your background in the course you're taking abroad. Check your ability level:

- Beginner Post Beginner
 Intermediate Advanced

C. LODGING: _____
Schools will try (cannot guarantee) to meet them. Special Diet (may be available) at additional cost.

Check Preferences.

- Single Share Twin Other: _____
 Yes Smoking No Smoking Either
 Yes Pets No Pets Either
 Yes Children No Children Either

D. GOALS: _____

E. INSURANCE: Includes prepaid study dates. To extend coverage up to 30 days before/after study dates, add \$5/day or \$19/week and advise dates.

- PREFER:** Homestay Involvement Freedom to Come/Go
ARE YOU? Quiet Outgoing Frequent Traveler
OBJECTIVES: Enrichment Academic Credit Job Related
HOBBIES: Reading Music Cooking Jogging Sports

F. PROGRAM INFORMATION	School/Center
Program Name (use title from Dates & Fees)	City/Country
Date: Start Program	Date: Start Lodging (most start day before)
No. of hours day/week	No. of weeks attending
Disabilities/Allergies/Health Problems	2nd Choice Program
How did you learn about NRCSA?	Social Security Number
Options (see program for choices)	
Your Signature (if you are under age 18, both parents must also sign)	

INSURANCE INCLUDED for PRE-PAID STUDY DATES

ACCIDENT / MEDICAL INSURANCE UP TO \$10,000

EMERGENCY MEDICAL EVACUATION UP TO \$25,000

EMERGENCY REUNION UP TO \$5,000

REPATRIATION UP TO \$7,500

LIFE INSURANCE \$5,000

24 HOUR EMERGENCY WORLDWIDE-MULTI-LINGUAL TELEPHONE ASSISTANCE

For More Info: <http://www.nrca.com/INS24hrHotline.html>

H. CREDIT CARDS:

For program deposit only (**not final payment**) check:
 VISA Mastercard American Express Amount Charged \$ _____

_____ / _____
Card Number (13 or more numbers) Exp Date

SIGNATURE (as on card) PRINT name (as on card)

CHANGE FEES of at least \$35 apply for each change you make. Some "changes" may result in cancellation fees.

CANCELLATIONS are effective the day received in writing by NRCSA in Milwaukee. All payments less \$140 per program fully refundable up to 60 days prior to departure. For cancellations within 60 days of departure, \$250 per person is not refundable; within 40 days of departure, less 50% of program cost or \$300 per person (whichever is greater); within 14 days of departure, 100% of program cost is non refundable. Airline cancellation penalties, if any, are in addition to those outlined above. Cancellation penalties are per person, per program. Medical, baggage (above that included) and cancellation insurance is strongly recommended. Attach a note if you have a medical condition or Rx which the school/center should know about.

CONDITIONS: Each institution listed herein is independent of the National Registration Center for Study Abroad (hereinafter referred to as NRCSA, controls, and will periodically make changes in the program. Classes may fill, be changed, or dropped by the sponsoring academic institutions. NRCSA is a division of Mibar Ltd. and is not responsible for these changes or other actions beyond its control such as strikes, postal delays or loss, mechanical breakdowns, weather, government actions, delay or acts/omissions of suppliers. NRCSA may make changes or substitutions or cancel any program. In the event of entire program cancellation by NRCSA, liability is limited to refunding all monies paid to NRCSA for said program. Passengers electing not to use portions of a program shall not be entitled to a refund. No agent or representative of NRCSA shall have the right to alter the provisions listed herein. Costs based on tariffs and exchange rates effective the date of printing of this material, and are subject to change. Additional costs resulting from such change will be paid by the participant. Registrations are valid when accepted by NRCSA in Milwaukee. The passage contract used by the airline, when issued, is the sole agreement between it and you. Photographs of or statements by participants may be used by NRCSA. NRCSA, group leaders or foreign coordinators, at their discretion, may get medical assistance for participants, or place them in a hospital, or fly them back to the U.S. for medical treatment. All costs related to medical treatment or evacuation will be paid by the participant. As visitors you are expected to adhere to foreign rules and customs. If the foreign staff feels you are not adhering to these rules and customs, your participation in the program shall terminate immediately without refund whatsoever. A "homestay" is defined as living with a local person(s) in the foreign country and may not be multi generational, multinational, etc. It is the responsibility of the participant to have required proof of citizenship and visa(s) if applicable - check with the consulate of the country(s) you will be visiting.

INFORMATION USE: Information provided to NRCSA will be shared with participating organizations to facilitate your registration.

NOTE: Classes canceled in honor of local holidays are not made up. Foreign Language schools use placement tests. If there is no group at your level, smaller group or tutor classes may be substituted with fewer hours per week. Classes are conducted entirely in the target language. See **Fast Facts Guide** for more information.