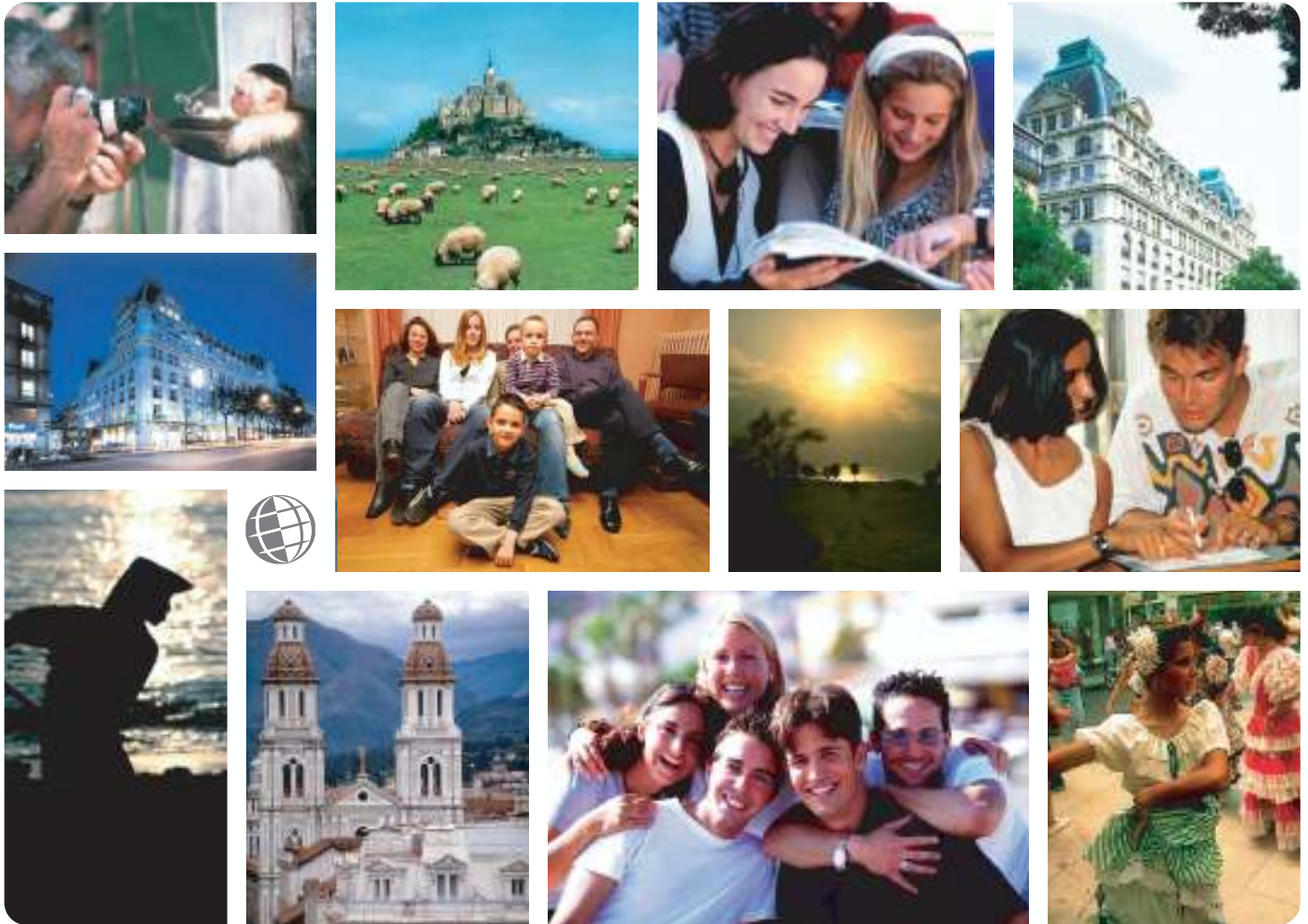


*Live the Language
Learn the Culture*

Foreign Language and Cultural Immersion Since 1968
**NATIONAL REGISTRATION CENTER
FOR STUDY ABROAD**



Spain 2008-2009

For more information please visit: www.nrca.com

NRCSA is a proud member of:



National Registration Center for Study Abroad
PO Box 1393 Milwaukee, Wisconsin 53201 USA
Tel: (414) 278-0631 Email: study@nrca.com

National Registration Center for Study Abroad (NRCSA)

P.O. Box 1393, Milwaukee, WI 53201 USA. Tel. 414 278 0631 Fax. 414 271 8884



Learn the Culture  Live the Language  Since 1968

INTERNATIONAL HOUSE LACUNZA - SAN SEBASTIAN, SPAIN

ABOUT THE SCHOOL AND THE CITY

International House Lacunza is located the centre of San Sebastian, the cultural capital of the Basque region of Spain. Escuela de la Lengua is a member of the International House (IH) worldwide organization with 130 language schools in 30 countries. As an IH member school, International House Lacunza teachers participate in all IH Teacher Training courses and seminars where ideas are exchanged and analysis is carried out of the latest advances at all levels.

International House Lacunza's premises have been designed to make it easier to communicate and learn Spanish. Complete with a terrace, a communal area with a library, multimedia computers and video, and air conditioning, the school has a pleasant atmosphere.

A family resort town of long standing, **San Sebastian** rests on the bay of La Concha in northwestern Spain, is surrounded by rolling low hills and has three very nice beaches to choose from. The average temperature in summer is around 22C°/72F°, with winter coming in at 8C°/47F°. The town offers endless possibilities to enjoy your free time: lively nightlife, romantic walks along the beach, the Castle or the Wind Comb, museums, theatre, and cultural centres.

ABOUT THE PROGRAM

International House Lacunza's programs are structured in 8 levels, from beginner to advanced. Two teachers, university graduates specializing in teaching Spanish, coordinate each group's classes together with the school's Director of Studies.

Intensive Program 20 hours per week (25 in summer). The Intensive Program is Lacunza's standard Spanish program. There are 4 to 12 students per class with 20 hours per week (25 in summer). The program is designed to promote the student's ability to communicate. Classes are in the morning or afternoon.

Super Intensive Mini-Group Program - Summer Only 30 hours per week. The Super Intensive Mini-Group Program is designed for professionals and those who have specialized vocabulary needs. From 3 to 6 students maximum form the class size. The program includes creating real working situations, reinforcing formal Spanish. Classes are in the morning.

Group & Culture Program 28 hours per week - 20 Group + 8 Culture. Elementary Level Required. The Group & Culture Program combines the Intensive Program at 20 hours per week with specialized courses that enables the student to improve his/her knowledge of the Spanish culture. There are 8 culture lessons per week and each week students study a different subject, such as Spanish Art in the 20th Century, Modern Spanish History, Spanish Literature, Cinema, and Business.

Executive Program Tutor 40 hours per week. Specifically designed for professionals and executives, this program consists of 40 hours per week of private classes. The student learns at a faster pace and the content covers subjects that pertain to his/her profession, such as presentations, lectures, negotiations, etc. The program includes 4 lunches and 1 dinner with the teacher.

Methodology & Culture for Teachers of Spanish

30 hours per week, 2 weeks. High Intermediate Level Required. This course is intended for nonnative Spanish teachers that want to learn about new teaching ideas and discover new material to use in the classroom. Topics included in the course are Analysis of Language, Teaching Methods & Materials, Past Teaching Experience, Culture, and Debates.

Basque Language & Culture 20 hours per week, 2 weeks. Intermediate Level Required A two week introduction to an ancient language and culture with deeply rooted traditions, combined with specific excursions and visits. Topics include origin and characteristics of the Basque language, modern Basque, Basque traditions, mythology, and modern Basque society.

ACCOMMODATIONS

Homestays International House Lacunza has a large number of extremely responsible, trustworthy families with various lifestyles to enable you to fit in with the one that best suits your characteristics.

Shared Student Apartment Students have their own room with a desk, and the facilities are shared: the living room, kitchen, bathrooms, washing machine.

Other Accommodation International House Lacunza can arrange private apartments, hotels and guesthouses at additional cost.

SPECIAL ACTIVITIES

International House Lacunza organizes "intercambio" parties, talks and lectures, video, international meals and visits to cultural centres, exhibitions, and the Congress Centre. The school also organizes dinners prepared by student volunteers and a staff member.

TO REGISTER:

Complete the NRCSA Preregistration Form or contact the National Registration Center for Study Abroad at 207 E Buffalo Street, Suite 610 * P.O. Box 1393, Milwaukee, WI 53201 USA, or by calling (414) 278-0631; by Fax (414) 271-8884.

Check out our website at <http://www.nrcsa.com>
or e-mail us at study@nrcsa.com

Programs & Activities - San Sebastian, Spain

Programs

Programs are structured in 8 levels, from beginner to advanced. Two teachers, university graduates specializing in teaching Spanish, coordinate each group's classes together with the school's Director of Studies.

Students who already have some knowledge of Spanish will sit for an oral and written test at the start of the course in order to establish their level. Language levels are defined as follows:

- Beginner: The student has either no knowledge or only knows a few words and occasional expressions.
- Elementary: The student can exchange basic information with simple structures. He/she knows the present tense and has a vague idea of the past tense.
- Intermediate: The student can hold a simple conversation on a one-to-one basis, but is limited by errors and lack of vocabulary. He/she is at ease using the present tense, and has a general knowledge of the past tense.
- High Intermediate: The student can communicate in normal situations, but has difficulty with precision due to a lack of words and expressions. He/she knows the subjunctive and uses it in certain typical structures.
- Advanced: The student can communicate easily, but has difficulties with more complicated structures.

Intensive Program 20 hours per week

The Intensive Program is the school's standard Spanish program. There are 4 to 12 students per class with 20 hours per week. The program is designed to promote the student's ability to communicate. Classes are held in the morning or afternoon, which the school will determine upon the student's arrival.

Super Intensive Mini-Group Program -Summer Only 30 hours per week.

The Super Intensive Mini-Group Program is available only during the summer. It is designed for professionals and those who have specialized vocabulary needs. From 3 to 6 students maximum form the class size and 6 classes are held per day. The program includes creating real working situations, reinforcing the student's formal Spanish. Classes are scheduled in the morning.



Group & Culture Program The Intensive Program + 8 Culture lessons per week. Elementary level required.

The Culture Program is a specialized courses that enables the student to improve his/her knowledge of the Spanish culture. There are 8 culture lessons per week and each week students study a different subject:

- Spanish Art in the 20th Century: The life and works of Chillida, Picasso and Dali
- Modern Spanish History: The civil war to the present
- Spanish Literature: The Generation of 1927, with a focus on Larca in Spanish Literature and Marquez in Latin American Literature.
- The Social & Political Situation in Spain: Youth today, the educational system and journalism.
- Basque Language and Culture: An introduction to the language and the political and social situation in the Basque region
- Cinema: Different periods of Spanish cinema
- Writing Skills: Different types of documents and different writing styles
- Business Spanish: C.V.'s, interviews, formal letters, and business language

Culture Course is available on request, and at additional cost.

Executive Program Tutor

Tutor 40 hours per week.

Specifically designed for professionals and executives, this program consists of 40 hours per

Programs

Intensive Program
Super Intensive Mini-
Group
Group & Culture
Program
Executive Program
Tutor
Methodology &
Culture
Junior Summer Course
Basque Language
Tutor

Admissions &
Academic Credit
Certificates & Exams

Activities

Social and cultural
activities

Comments

"I liked meeting people from several different countries and class time (I like the immersion method). Also, independent travel over the weekends."

University Student,
Doylestown, PA

"I loved living in San Sebastian and exploring the surrounding region. It was absolutely wonderful."

"US students may contact NRCSA ... it has been a clearing center for study outside the US for years."

Christian Science Monitor

week of private one-on-one classes. The student learns a faster pace and the content covers subjects that pertain to his/her profession and field, such as presentations of products, lectures, negotiations, etc.

The program includes 4 lunches and 1 dinner with the teacher per week.

Methodology & Culture 30 hours per week, 2 weeks. High Intermediate level required.

This course is intended for nonnative Spanish teachers that want to learn about new teaching ideas and discover new material to use in the classroom. Topics included in the course are:



- * Analysis of Language: Ideas and teaching materials, subjunctive, ser and estar, por and para, prepositions, future tenses and phrases used in everyday speech.

- * Teaching Methods & Materials: Typical structure of a class; Teaching materials and how to explain them; Ideas and methods to teach, when and why to use them.

- * Past Teaching Experience, Culture, Debates: Situations in class, how to motivate and discipline; Educational system in Spain and other countries; Basque society; The Spanish Autonomies; Spanish Cinema; Presentation.

Junior Summer Course (14 - 17 years old) The tuition includes 5 hours Spanish lessons per day, shared room and full board accommodation in host families, airport transfer and a varied and supervised program of activities and excursions.

*Half-day activities with a monitor on Mondays, Wednesdays and Fridays.

*Full day excursion on Saturdays. Expenses during the excursions are included in the price.)

[CLICK HERE TO VIEW THE TEEN PROGRAM](#)

Basque Language Tutor Private lessons 20 hours per week, 2 weeks. Intermediate Spanish level required

A two week introduction to an ancient language and culture with deeply rooted traditions. Topics include:

- * Basque Language: Origin of the language; Characteristics; Modern Basque language.

- * Basque Culture: Traditions and customs; Distinguished Basques; Mythology; Nationalism; Modern Basque society.



Spanish & Surfing

Take advantage of San Sebastian's beautiful beaches and surf with our Surfing Course. Monday to Friday, with 1 hour daily lessons under the instruction of an expert. All materials are provided (board, wetsuit, and a hot shower in the winter). This course is offered from June 6 to September 30.

Admissions & Academic Credit

Students age 18 years and older are welcomed regardless of educational background, occupation or nationality. No previous knowledge of Spanish is required except where otherwise indicated.

Students desiring credit for their study should contact their home school or request the NRCSA Credit Fact Sheet. Generally, U.S. schools consider 15 hours of study to be equal to 1 semester credit.

For more information about academic credit in Spanish speaking countries, [please click here](#).

For general information on academic credit, [please click here](#).

Certificates & Exams

A diploma will be issued to each student at the end of the course, indicating the level of proficiency they have attained, how many hours of group course and of private tuition they have followed, and mentioning any specific content.

The DELE diplomas are official diplomas given by the Spanish Ministry of Education and Science which recognize the candidate as having a certain skill level in the Spanish language. Preparation classes for the following DELE exams is offered at additional cost and are held on specific start dates:

1. Diploma Básico
2. Diploma Superior

National Registration Center for Study Abroad
P.O. Box 1393 Milwaukee, WI 53201 USA
Tel: (414) 278-0631 **Fax:** (414) 271-8884 **E-Mail:** study@nrca.com

ALL NRCSA PROGRAMS INCLUDE:

- ✓ Foreign language immersion classes
- ✓ Small interactive group and/or one-on-one instruction
- ✓ Culture program integrated into conversation classes, activities
- ✓ Meet-the-People interaction at school, homestays, & community events
- ✓ Orientation covering attractions, how to, health, safety, entertainment
- ✓ Academic assessments, placement-exit tests, Achievement Certificate
- ✓ Lodging (reduced fee if no lodging needed)
- ✓ Meals and/or cooking facilities at most centres
- ✓ Insurance: medical and accident - see below
- ✓ Emergency Hotline staffed 24 hours/day - see below
- ✓ Housing Coordinator familiar with area homestays, apartments, hotels
- ✓ Activity Coordinator facilitates transfers, cultural/social activities, tours
- ✓ Program Director experienced working with foreign participants
- ✓ Qualified, experienced, and certified educators
- ✓ Weekly proficiency goals and progress assessments
- ✓ Planning and Orientation materials
- ✓ International Ambiance, participants from around-the-world welcome
- ✓ Telecom assistance, web/e-mail access, usually on-site
- ✓ Local taxes for included services
- ✓ 24:7 Culture Immersion w/ native speakers: class, homestay, community
- ✓ **ALL NRCSA PROGRAMS INCLUDE the following INSURANCE***

ACCIDENT INSURANCE up to \$10,000 SICKNESS INSURANCE up to \$10,000

EMERGENCY MEDICAL EVACUATION up to \$25,000

EMERGENCY REUNION up to \$5,000

REPATRIATION up to \$7,500

LIFE INSURANCE \$5,000

plus

24 HOUR EMERGENCY WORLDWIDE MULTI-LINGUAL TELEPHONE ASSISTANCE

MANY ALSO OFFER

- ✓ **Tours:** cultural visits, day and weekend fieldtrips
- ✓ **Art:** classes/workshops, craft, dance, theater, fashion, music, photo
- ✓ **Humanities:** culture, area studies, hist, lit, gov't, educ, comm, plus...
- ✓ **Health:** golf, swimming, tennis, diving, skiing, riding, plus...
- ✓ **Special:** vocabulary classes tailored to your professional needs
- ✓ **Lodging:** homestay, apartment, dorm, hotel, special diet
- ✓ **Food:** home cooking, cooking classes, dine-around, wine tasting
- ✓ **Family:** services, daycare, child classes, community services
- ✓ **Teacher:** training, workshops, practicums, practice teaching, ECH
- ✓ **Teen:** camps and youth programs (including experiential)
- ✓ **University:** credit, undergraduate and graduate
- ✓ **Professional:** development credit in many fields, licensure, CEU
- ✓ **Volunteer:** medical, social service, ecology, teach plus...
- ✓ **Internships:** business, media, arts, eco, tourism, computer, plus...
- ✓ **Business:** classes, visits, networking, executive support services
- ✓ **Peer-to-Peer:** share interests, network by profession or hobby
- ✓ **Current Events & Professional Workshops, Holiday Courses**
- ✓ **Distance** educ liaison service, independent studies, research assist
- ✓ **Free** books and course materials. Return at end of studies
- ✓ **Free** airport transfers and internet access
- ✓ **Assessment** reports for attendance, progress, acculturation if needed
- ✓ **Medical:** professional training, law, social work, sciences etc.

** If you have a problem while studying abroad, call the 24 hour hotline! Call Any Time from Anywhere! Medical or travel emergencies, legal or medical or embassy referrals, lost passport or luggage, emergency message relay, coordinating emergency prescription replacement or cash transfer, emergency translations, 24-hour medical monitoring. Problems seldom occur, but when they do, it is nice to know insurance and worldwide assistance are included in your cost for study dates prepaid through NRCSA as reflected on your NRCSA confirmation. Additional optional insurance available upon request. Refer to the certificate for specific terms, conditions and other details regarding benefits, limitations, eligibility and exclusions of this plan. Questions? Contact NRCSA: Tel: 414-278-0631 ... E-Mail: info@nrcca.com ... Web: <http://www.nrcca.com>*

For Questions, Concerns, or Registration, Contact NRCSA
National Registration Center for Study Abroad * Box 1393, Milwaukee WI 53201 USA
Tel 414-278-0631 * Fax 414-271-8884* www.nrcca.com * info@nrcca.com
Since 1968 * Language-Culture Immersion Worldwide * Start Weekly * All Ages * Credit, CEU or Enrichment

PREREGISTRATION FORM – NRCSA PROGRAMS

1. Complete & send to NRCSA, P.O. Box 1393, Milwaukee, WI 53201, USA • Tel. (414) 278-0631 • Fax (414) 271-8884 • Web: www.nrcca.com
2. Enclose a non-refundable deposit/registration fee of \$140 per person, per program, payable to NRCSA (\$40 registration fee & \$100 program deposit applied towards the program costs).
3. Register early. Add \$40 per person late enrollment fee if paying in full within 40 days of departure. Within 20 days, payments by certified check.
4. Credit Cards may be used for deposits (see "H" below). NRCSA street address for overnight deliveries is 207 East Buffalo Street, Suite 610, Milwaukee, WI 53202 USA. You are welcome to photocopy this form. Please send separate form for each school if taking multiple programs.

A. Name(s) _____ Sex _____ Birthdate _____ Citizenship _____
Please print
 _____ Employer _____ Occupation _____
If student, school attending and year

Street: _____ Tel. Home: _____
Street address (not P.O. Box) where someone can sign for documents sent to you.
 City/State/Zip: _____ Tel. Work: _____
 Fax: _____
 E-mail: _____

In Emergency, notify: _____
(Name, Address, Phone)

B. BACKGROUND: _____
Describe your background in the course you're taking abroad. Check your ability level:
 Beginner Post Beginner
 Intermediate Advanced

C. LODGING: _____
Schools will try (cannot guarantee) to meet them. Special Diet (may be available) at additional cost.

D. GOALS: _____

E. INSURANCE: Includes prepaid study dates. To extend coverage up to 30 days before/after study dates, add \$5/day or \$19/week and advise dates.

- Check Preferences.**
 Single Share Twin Other: _____
 Yes Smoking No Smoking Either
 Yes Pets No Pets Either
 Yes Children No Children Either
PREFER: Homestay Involvement Freedom to Come/Go
ARE YOU? Quiet Outgoing Frequent Traveler
OBJECTIVES: Enrichment Academic Credit Job Related
HOBBIES: Reading Music Cooking Jogging Sports

F. PROGRAM INFORMATION	School/Center
Program Name (use title from Dates & Fees)	City/Country
Date: Start Program	Date: Start Lodging (most start day before)
No. of hours day/week	No. of weeks attending
Disabilities/Allergies/Health Problems	2nd Choice Program
How did you learn about NRCSA?	Social Security Number
Options (see program for choices)	
Your Signature (if you are under age 18, both parents must also sign)	

INSURANCE INCLUDED for PRE-PAID STUDY DATES

ACCIDENT / MEDICAL INSURANCE UP TO \$10,000

EMERGENCY MEDICAL EVACUATION UP TO \$25,000

EMERGENCY REUNION UP TO \$5,000

REPATRIATION UP TO \$7,500

LIFE INSURANCE \$5,000

24 HOUR EMERGENCY WORLDWIDE-MULTI-LINGUAL TELEPHONE ASSISTANCE

For More Info: <http://www.nrcca.com/INS24hrHotline.html>

H. CREDIT CARDS:

For program deposit only (**not final payment**) check:
 VISA Mastercard American Express Amount Charged \$ _____

_____ / _____
Card Number (13 or more numbers) Exp Date

SIGNATURE (as on card) PRINT name (as on card)

CHANGE FEES of at least \$35 apply for each change you make. Some "changes" may result in cancellation fees.

CANCELLATIONS are effective the day received in writing by NRCSA in Milwaukee. All payments less \$140 per program fully refundable up to 60 days prior to departure. For cancellations within 60 days of departure, \$250 per person is not refundable; within 40 days of departure, less 50% of program cost or \$300 per person (whichever is greater); within 14 days of departure, 100% of program cost is non refundable. Airline cancellation penalties, if any, are in addition to those outlined above. Cancellation penalties are per person, per program. Medical, baggage (above that included) and cancellation insurance is strongly recommended. Attach a note if you have a medical condition or Rx which the school/center should know about.

CONDITIONS: Each institution listed herein is independent of the National Registration Center for Study Abroad (hereinafter referred to as NRCSA, controls, and will periodically make changes in the program. Classes may fill, be changed, or dropped by the sponsoring academic institutions. NRCSA is a division of Mibar Ltd. and is not responsible for these changes or other actions beyond its control such as strikes, postal delays or loss, mechanical breakdowns, weather, government actions, delay or acts/omissions of suppliers. NRCSA may make changes or substitutions or cancel any program. In the event of entire program cancellation by NRCSA, liability is limited to refunding all monies paid to NRCSA for said program. Passengers electing not to use portions of a program shall not be entitled to a refund. No agent or representative of NRCSA shall have the right to alter the provisions listed herein. Costs based on tariffs and exchange rates effective the date of printing of this material, and are subject to change. Additional costs resulting from such change will be paid by the participant. Registrations are valid when accepted by NRCSA in Milwaukee. The passage contract used by the airline, when issued, is the sole agreement between it and you. Photographs of or statements by participants may be used by NRCSA. NRCSA, group leaders or foreign coordinators, at their discretion, may get medical assistance for participants, or place them in a hospital, or fly them back to the U.S. for medical treatment. All costs related to medical treatment or evacuation will be paid by the participant. As visitors you are expected to adhere to foreign rules and customs. If the foreign staff feels you are not adhering to these rules and customs, your participation in the program shall terminate immediately without refund whatsoever. A "homestay" is defined as living with a local person(s) in the foreign country and may not be multi generational, multinational, etc. It is the responsibility of the participant to have required proof of citizenship and visa(s) if applicable - check with the consulate of the country(s) you will be visiting.

INFORMATION USE: Information provided to NRCSA will be shared with participating organizations to facilitate your registration.

NOTE: Classes canceled in honor of local holidays are not made up. Foreign Language schools use placement tests. If there is no group at your level, smaller group or tutor classes may be substituted with fewer hours per week. Classes are conducted entirely in the target language. See **Fast Facts Guide** for more information.