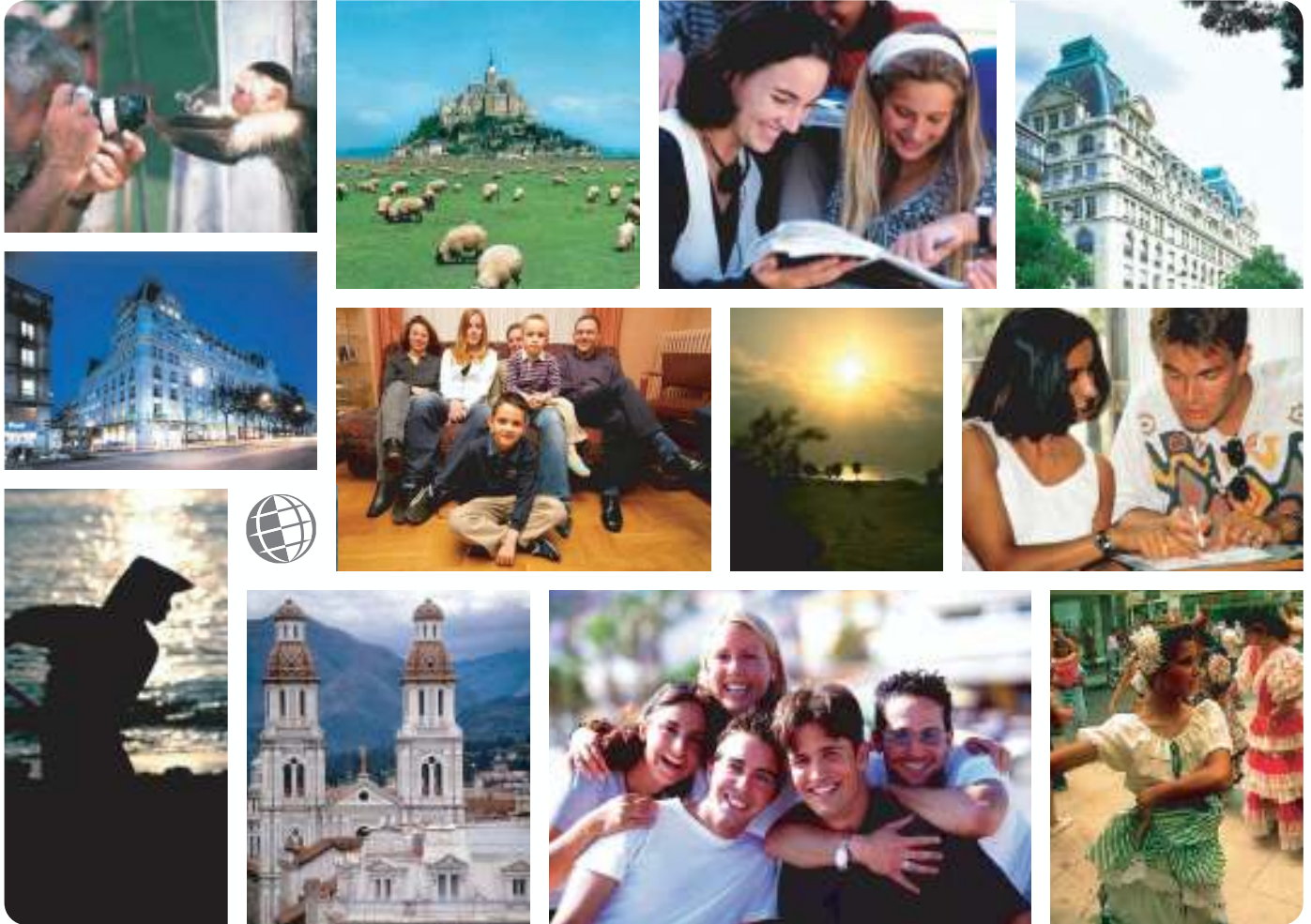


*Live the Language
Learn the Culture*

Foreign Language and Cultural Immersion Since 1968
**NATIONAL REGISTRATION CENTER
FOR STUDY ABROAD**



Spain 2008-2009

For more information please visit: www.nrca.com

NRCSA is a proud member of:



National Registration Center for Study Abroad
PO Box 1393 Milwaukee, Wisconsin 53201 USA
Tel: (414) 278-0631 Email: study@nrca.com

National Registration Center for Study Abroad (NRCSA)

P.O. Box 1393, Milwaukee, WI 53201 USA. Tel. 414 278 0631 Fax. 414 271 8884



Learn the Culture  Live the Language  Since 1968

ZADOR - VITORIA, SPAIN

ABOUT THE SCHOOL AND THE CITY

Founded in 1990, ZADOR Escuela de Espanol is dedicated to the teaching of Spanish to foreigners, as well as to the production of educational materials of Spanish as a foreign language. With dynamic, highly qualified teachers, ZADOR maintains a friendly atmosphere where students can feel at home while also being challenged to acquire and improve their Spanish linguistic skills.

Vitoria the capital of the Basque Autonomous Community in northwestern Spain, is situated on a wide plain surrounded by mountains and 60 km from the coast. An old town because of its history, a young town because of its development, Vitoria provides ample cultural, environmental and social services enjoyed by its some 220,000 inhabitants.

ABOUT THE PROGRAM

Intensive General Spanish Course Group 20 hours per week. The Intensive General Spanish Course takes place year-round. All levels are offered, beginner to superior. The course includes 20 lessons per week of Spanish language study. The class has a minimum of three students and maximum class size is eight. The course at all levels includes grammar, vocabulary, listening and reading comprehension, oral and written expression.

Superintensive General Spanish Course 25 hours per week: 20 Group + 5 Tutor. The Superintensive Course takes place year-round. All levels are offered, beginner to superior. The course includes 23 total hours of Spanish language study per week divided into 20 lessons in a group setting plus 3 lessons per week with a private tutor. The group class has a minimum of three students and maximum class size is eight.

Spanish Language & Culture Course Group, 25 hours per week: 20 Group Spanish language + 5 Hispanic Culture. Elementary 2 Level Required. Zador's Spanish Language & Culture Course combines the Intensive General Spanish Course with an approach to Spanish and South American life through culture, history, literature, art, and cinema. Both sections of the course are held in a group setting of a minimum of three students and a max of eight.

Individual Spanish Course Tutor 20 hours per week. Zador's Individual Spanish Course is a personalized course specially adapted to the level, pace and study strategies of the student. The focus of study with a private tutor may be general Spanish language, Spanish language and culture, DELE exam preparation, business Spanish, or any area that is of interest to the student. This tailor-made course requires the student to complete and submit a language level exam and a questionnaire of interests prior to their arrival at the school, therefore, these materials will be sent to the student after he/she has registered for the course through NRCSA.

Spanish & Fine Arts Course

12 or 24 weeks, Group 30 hours per week: 20 Intensive General Spanish + 10 Fine Arts. The school has designed the Spanish & Fine Arts Course in cooperation with the Arts & Crafts School of Vitoria, which has over 225 years of teaching experience and is officially recognized by the Spanish government. It combines Zador's Intensive General Spanish Course with up to three 12-week cycles of Fine Arts study at the Arts & Crafts School.

ACCOMMODATIONS

Homestay ZADOR arranges accommodation with local host families. These families are carefully chosen, visited and evaluated often by the school's housing coordinator, and can vary. Students are encouraged to outline their preferences for a host family upon registration with NRCSA. Since most inhabitants of Vitoria live in the urban area, the majority of homestays are flats. Only a small percentages (less than 5%) are in single-family homes outside the city. Most homestay flats consist of three bedrooms, a living room, kitchen and two bathrooms. Students are provided with a private bedroom, bed linens, bath towels and their own key to the flat. The student will have use of the washing machine (if available) to wash clothes.

Shared Flat For the independent student, ZADOR offers a shared flat option. The flat is shared with either other students who are also studying at ZADOR or with local Spaniards. Each student is provided with a private bedroom with desk and a key to the flat, while the kitchen, bathroom and other living spaces are shared. Students should bring their own bath towels and bed linen. Since no meals are included, students are expected to shop for and prepare their own meals. Students should keep their own room neat and tidy, while the cleaning of common rooms will be shared by all. A deposit, payable upon arrival, is required (approximately \$100USD) and is refundable upon departure if no damage has been done to the flat.

Residence Single and double room residences, similar to dormitory rooms, are available on a very limited basis. Students are provided with a private bedroom and 2 meals daily (cold meals), but should bring their own bath towels and bed linen. Bathrooms are shared. Upon arrival, students are supplied with an information form which includes the rules and timetable of the residence

TO REGISTER:

Complete the NRCSA Preregistration Form or contact the National Registration Center for Study Abroad at 207 E Buffalo Street, Suite 610 * P.O. Box 1393, Milwaukee, WI 53201 USA, or by calling (414) 278-0631; by Fax (414) 271-8884.

Check out our website at <http://www.nrcsa.com>
or e-mail us at study@nrcsa.com

Programs & Activities - Vitoria, Spain

Programs

ZADOR's teaching method is based on an efficient, flexible, diverse, culturally inclusive, entertaining and communicative approach. Each program of study (level) is divided into unites, with each unite consisting of exercises in grammar, vocabulary, culture, reading comprehension, written expression, listening and speaking, pronunciation and intonation. Although a certain exercise may concentrate on one particular skill, by integrating other skills into the exercise ZADOR creates a natural and communicative method of teaching. Because ZADOR emphasizes the language's communicative function, teachers encourage students to develop oral and written expressive skills, as well as reading and listening interpretive skills.



ZADOR offers eight levels of study: beginner, elementary 1, elementary 2, intermediate 1, intermediate 2, intermediate 3, advanced, and superior. For a complete level description, please contact NRCSA.

A group of ZADOR's teachers devoted to the preparation of educational materials designed classroom material which is edited by the school's own publishing section, ZADOR Editores, or by SGEL, the publisher that edited the school's textbook, *Escribe en Español*, which is used by a number of universities worldwide. ZADOR also uses additional material available on the market since each and every student is a case apart who requires a different teaching method.

All students will take a Spanish language level exam upon arrival, with the exception of complete beginners. All students receive the ZADOR Attendance Certificate at the completion of the course.

Please Note: All group courses are subject to a minimum required number of three students. If there is only one other student at your same language level, ZADOR will provide 2/3 of the hours of the course chosen. If there are no other students at your same language level, ZADOR will provide 1/3 of the hours of the course chosen. You will also receive guided work in the computer lab to complete the total hours of the course chosen.

Intensive General Spanish Course Group 20 hours per week. The Intensive General Spanish Course takes place year-round. All levels are offered, beginner to superior. The course includes 20 lessons per week of Spanish language study. The class has a minimum of three students and maximum class size is eight. The course at all levels includes grammar, vocabulary, listening and reading comprehension, oral and written expression.

Lessons are scheduled to begin at 9:00 and conclude at 13.30(1:30PM), Monday through Friday. Each lessons is 60 minutes in duration.

Superintensive General Spanish Course 25 hours per week: 20 Group + 5 Tutor. The Superintensive Course takes place year-round. All levels are offered, beginner to superior. The course includes 23 total hours of Spanish language study per week divided into 20 lessons in a group setting plus 3 lessons per week with a private tutor. The group class has a minimum of three students and maximum class size is eight.

As in the Intensive General Spanish Course, the group lessons of the Superintensive Course include work on grammar, vocabulary, listening and reading comprehension, oral and written expression. During individual lessons, the student studies those aspects of the Spanish language that are of most interest him/her, such as specific grammar or pronunciation problems, conversation practice that is specific to his/her career, etc.

Group lessons are scheduled to begin at 9:00 and conclude at 13.30(1:30PM), with individual tutor lessons scheduled in the afternoon after lunch, Monday through Friday. Each lessons is 60 minutes in duration.

Spanish Language & Culture Course Group, 25 hours per week: 20 Group Spanish language + 5 Hispanic Culture. Elementary 2 Level Required. Zador's Spanish Language & Culture Course combines the Intensive General Spanish Course with an approach to Spanish and South American life through culture, history, literature, art, and cinema. Both sections of the course are held in a group setting of a minimum of three students and a maximum of eight.

This course requires a minimum Spanish language level of elementary 2.

Spanish language lessons are scheduled to begin at 9:00 and conclude at 13.30(1:30PM), with the Hispanic culture lessons scheduled either in the afternoon or evening, depending on the event, Monday through Friday.



Individual Spanish Course Tutor 20 hours per week. Zador's Individual Spanish Course is a personalized course specially adapted to the level, pace and study strategies of the student. The focus of study with a private tutor may be general Spanish language, Spanish language and culture, DELE exam preparation, business Spanish, or any area that is of interest to the student.

Programs

Intensive General Spanish Superintensive General Spanish Spanish Language & Culture Course Individual Spanish Course Spanish & Fine Arts Course

Admissions & Academic Credit Certificates & Exams

Activities

Sport & Cultural Activities

Comments

"I was recommended to NRCSA by a fellow friend and found it a great help. I would recommend it to everyone!"

University Student,
Bellingham, WA

This tailor-made course requires the student to complete and submit a language level exam and a questionnaire of interests prior to their arrival at the school, therefore, these materials will be sent to the student after he/she has registered for the course through NRCSA.

Spanish & Fine Arts Course

12 or 24 weeks, Group 30 hours per week:
20 Intensive General Spanish + 10 Fine Arts.
The school has designed the Spanish & Fine Arts Course in cooperation with the Arts & Crafts School of Vitoria, which has over 225 years of teaching experience and is officially recognized by the Spanish government. It combines Zador's Intensive General Spanish Course with up to three 12-week cycles of Fine Arts study at the Arts & Crafts School.



The Intensive General Spanish Course takes place year-round. All levels are offered, beginner to superior. The course includes 20 lessons per week of Spanish language study. The average class has a minimum of three students and maximum class size is eight. The course at all levels includes grammar, vocabulary, listening and reading comprehension, oral and written expression. Spanish language lessons are scheduled to begin at 9:00 and conclude at 13.30(1:30PM), Monday through Friday.

The Arts & Crafts School of Vitoria, through its Plastic Arts and Artistic-Trade Crafts' Workshops, offers current teaching in a wide range of parallel and complementary activities. Students enrolled in the Spanish & Fine Arts Course will spend 2 hours per day (10 hours per week) studying at the Arts & Crafts School. The School offers three 12-week cycles:

1. Common Teaching Cycle

The Common Teaching Cycle constitutes the first relationship of the student with the visual world from a strictly plastic point of view, that is, a progressive approach to the world of image through continuous practice exercises. Three different fields are covered in this fundamental basic training cycle:

- * Form & Image (Drawing)
- * Color & Representation (Painting)
- * Space Configuration (Form-Space)

Classes in the Common Teaching Cycle are held daily or alternate days in the afternoon or evening, depending on the number of students enrolled during any given session, for a total of 10 hours per week.

The Common Teaching Cycle is designed for a diverse set of students, from the student hoping to enter the artistic field (Fine Arts, Practical Arts, Architecture, Design, Illustration, etc.) to the working adult student who is looking for personal development in this aspect of culture.

2. Drawing, Painting, Sculpting

The Drawing, Painting, Sculpting Cycle of teaching has a profound character and proposes a logical continuity of the principles developed in the previous cycle of Common Teaching. Once the relation between knowing to see and knowing to do is assimilated, it is up to the student to consolidate their own criteria for action based on their experience. Four different workshops give the student the chance of training based on his/her interests, aptitude and personal goals:

- * Natural Drawing Workshop
- * Painting Workshop
- * Sculpture Workshop
- * Engraving Workshop

Classes in the Drawing, Painting, Sculpting Cycle are held daily or alternate days in the afternoon or evening, depending on the number of students enrolled during any given session, for a total of 10 hours per week.

The Drawing, Painting, Sculpting Cycle is designed for students intending to continue studies in the artistic fields and for the working adult student who is looking for personal development in this aspect of culture. Because of its in-depth character, this cycle is intended for those students who have passed the Common Teaching Cycle, but is also open to students that have already attained adequate basic training.

3. Creative Projects

The Creative Projects Workshop Cycle creates a working space open to the plastic experimentation in all the teaching fields of the School. These workshops propose to the student who has completed the former cycles of Common Teaching and Drawing, Painting, Sculpting a continuity in his/her creative activity. Interdisciplinary work, teamwork, and a focus on professionalism are the characteristics of this formative cycle. Projects include work in:

- * Drawing
- * Painting
- * Sculpture
- * Engraving

- * Ceramics
- * Wood
- * Leather
- * Textile-Tapestry
- * Artistic Binding

Classes in the Creative Projects Cycle are held daily or alternate days in the afternoon or evening, depending on the number of students enrolled during any given session, for a total of 10 hours per week.

The Creative Projects Cycle is designed for the following students:

- * Students who have successfully passed both the Common Teaching and Drawing, Painting, Sculpting cycles
- * Students who are in the final years of university level artistic study (Fine Arts, Practical Arts, Architecture, Design, Illustration, etc.)
- * Students that have completed university level artistic study (Fine Arts, Practical Arts, Architecture, Design, Illustration, etc.)
- * Students with sufficient previous study and/or preparation

Enrollment Requirements

Enrollment in the Spanish & Fine Arts Course requires:

- * Completion and submission to NRCSA:
 - o NRCSA Registration Form with deposit.
 - o Letter of Introduction outlining previous study of the Spanish language and the Arts (if any), and describing the student's goals and specific area of artistic interest (drawing, painting, sculpture, etc.)
 - + If you fill out a registration form on-line, please mail, e-mail or fax your Letter of Introduction to NRCSA.
- * A student may choose to enroll in one cycle for 12 weeks, two cycles for 24 weeks or all three cycles for 36 weeks, however, he/she must attend the Intensive General Spanish Course at Zador for the entire period of study.

Admissions & Academic Credit

ZADOR Escuela de Espanol welcomes students age 18 years and older, unless enrolled in the Spanish Homestudy Course which accepts students age 14 and up. All students are accepted regardless of educational background, occupation or nationality. No previous knowledge of Spanish is required except where otherwise indicated.

Students desiring credit for their study at ZADOR should contact their home school or request the NRCSA Credit Fact Sheet. Generally, U.S. schools consider 15 hours of study to be equal to 1 semester credit.

For more information about academic credit in Spanish speaking countries, [please click here](#).
For general information on academic credit, [please click here](#).

Certificates & Exams

At the end of each course, each student receives a ZADOR Attendance Certificate.

ZADOR Escuela de Espanol organizes specific group courses to prepare students for the DELE (The Diploma of Spanish as a Foreign Language) for elementary 2 through advanced levels. The DELE courses enable students to acquire the skills and abilities required to pass the exams of Instituto Cervantes. These courses are available on request and at additional cost.

ALL NRCSA PROGRAMS INCLUDE:

- ✓ Foreign language immersion classes
- ✓ Small interactive group and/or one-on-one instruction
- ✓ Culture program integrated into conversation classes, activities
- ✓ Meet-the-People interaction at school, homestays, & community events
- ✓ Orientation covering attractions, how to, health, safety, entertainment
- ✓ Academic assessments, placement-exit tests, Achievement Certificate
- ✓ Lodging (reduced fee if no lodging needed)
- ✓ Meals and/or cooking facilities at most centres
- ✓ Insurance: medical and accident - see below
- ✓ Emergency Hotline staffed 24 hours/day - see below
- ✓ Housing Coordinator familiar with area homestays, apartments, hotels
- ✓ Activity Coordinator facilitates transfers, cultural/social activities, tours
- ✓ Program Director experienced working with foreign participants
- ✓ Qualified, experienced, and certified educators
- ✓ Weekly proficiency goals and progress assessments
- ✓ Planning and Orientation materials
- ✓ International Ambiance, participants from around-the-world welcome
- ✓ Telecom assistance, web/e-mail access, usually on-site
- ✓ Local taxes for included services
- ✓ 24:7 Culture Immersion w/ native speakers: class, homestay, community
- ✓ **ALL NRCSA PROGRAMS INCLUDE the following INSURANCE***

ACCIDENT INSURANCE up to \$10,000 SICKNESS INSURANCE up to \$10,000

EMERGENCY MEDICAL EVACUATION up to \$25,000

EMERGENCY REUNION up to \$5,000

REPATRIATION up to \$7,500

LIFE INSURANCE \$5,000

plus

24 HOUR EMERGENCY WORLDWIDE MULTI-LINGUAL TELEPHONE ASSISTANCE

MANY ALSO OFFER

- ✓ **Tours:** cultural visits, day and weekend fieldtrips
- ✓ **Art:** classes/workshops, craft, dance, theater, fashion, music, photo
- ✓ **Humanities:** culture, area studies, hist, lit, gov't, educ, comm, plus...
- ✓ **Health:** golf, swimming, tennis, diving, skiing, riding, plus...
- ✓ **Special:** vocabulary classes tailored to your professional needs
- ✓ **Lodging:** homestay, apartment, dorm, hotel, special diet
- ✓ **Food:** home cooking, cooking classes, dine-around, wine tasting
- ✓ **Family:** services, daycare, child classes, community services
- ✓ **Teacher:** training, workshops, practicums, practice teaching, ECH
- ✓ **Teen:** camps and youth programs (including experiential)
- ✓ **University:** credit, undergraduate and graduate
- ✓ **Professional:** development credit in many fields, licensure, CEU
- ✓ **Volunteer:** medical, social service, ecology, teach plus...
- ✓ **Internships:** business, media, arts, eco, tourism, computer, plus...
- ✓ **Business:** classes, visits, networking, executive support services
- ✓ **Peer-to-Peer:** share interests, network by profession or hobby
- ✓ **Current Events & Professional Workshops, Holiday Courses**
- ✓ **Distance** educ liaison service, independent studies, research assist
- ✓ **Free** books and course materials. Return at end of studies
- ✓ **Free** airport transfers and internet access
- ✓ **Assessment** reports for attendance, progress, acculturation if needed
- ✓ **Medical:** professional training, law, social work, sciences etc.

** If you have a problem while studying abroad, call the 24 hour hotline! Call Any Time from Anywhere! Medical or travel emergencies, legal or medical or embassy referrals, lost passport or luggage, emergency message relay, coordinating emergency prescription replacement or cash transfer, emergency translations, 24-hour medical monitoring. Problems seldom occur, but when they do, it is nice to know insurance and worldwide assistance are included in your cost for study dates prepaid through NRCSA as reflected on your NRCSA confirmation. Additional optional insurance available upon request. Refer to the certificate for specific terms, conditions and other details regarding benefits, limitations, eligibility and exclusions of this plan. Questions? Contact NRCSA: Tel: 414-278-0631 ... E-Mail: info@nrcca.com ... Web: <http://www.nrcca.com>*

For Questions, Concerns, or Registration, Contact NRCSA
National Registration Center for Study Abroad * Box 1393, Milwaukee WI 53201 USA
Tel 414-278-0631 * Fax 414-271-8884* www.nrcca.com * info@nrcca.com
Since 1968 * Language-Culture Immersion Worldwide * Start Weekly * All Ages * Credit, CEU or Enrichment

PREREGISTRATION FORM – NRCSA PROGRAMS

1. Complete & send to NRCSA, P.O. Box 1393, Milwaukee, WI 53201, USA • Tel. (414) 278-0631 • Fax (414) 271-8884 • Web: www.nrcea.com
2. Enclose a non-refundable deposit/registration fee of \$140 per person, per program, payable to NRCSA (\$40 registration fee & \$100 program deposit applied towards the program costs).
3. Register early. Add \$40 per person late enrollment fee if paying in full within 40 days of departure. Within 20 days, payments by certified check.
4. Credit Cards may be used for deposits (see "H" below). NRCSA street address for overnight deliveries is 207 East Buffalo Street, Suite 610, Milwaukee, WI 53202 USA. You are welcome to photocopy this form. Please send separate form for each school if taking multiple programs.

A. Name(s) _____ Sex _____ Birthdate _____ Citizenship _____
Please print
 _____ Employer _____ Occupation _____
If student, school attending and year

Street: _____ Tel. Home: _____
Street address (not P.O. Box) where someone can sign for documents sent to you.
 City/State/Zip: _____ Tel. Work: _____
 Fax: _____
 E-mail: _____

In Emergency, notify: _____
(Name, Address, Phone)

B. BACKGROUND: _____
Describe your background in the course you're taking abroad. Check your ability level:
 Beginner Post Beginner
 Intermediate Advanced

C. LODGING: _____
Schools will try (cannot guarantee) to meet them. Special Diet (may be available) at additional cost.

Check Preferences.

- Single Share Twin Other: _____
 Yes Smoking No Smoking Either
 Yes Pets No Pets Either
 Yes Children No Children Either

D. GOALS: _____

E. INSURANCE: Includes prepaid study dates. To extend coverage up to 30 days before/after study dates, add \$5/day or \$19/week and advise dates.

- PREFER:** Homestay Involvement Freedom to Come/Go
ARE YOU? Quiet Outgoing Frequent Traveler
OBJECTIVES: Enrichment Academic Credit Job Related
HOBBIES: Reading Music Cooking Jogging Sports

F. PROGRAM INFORMATION	School/Center
Program Name (use title from Dates & Fees)	City/Country
Date: Start Program	Date: Start Lodging (most start day before)
No. of hours day/week	No. of weeks attending
Disabilities/Allergies/Health Problems	2nd Choice Program
How did you learn about NRCSA?	Social Security Number
Options (see program for choices)	
Your Signature (if you are under age 18, both parents must also sign)	

INSURANCE INCLUDED for PRE-PAID STUDY DATES

ACCIDENT / MEDICAL INSURANCE UP TO \$10,000

EMERGENCY MEDICAL EVACUATION UP TO \$25,000

EMERGENCY REUNION UP TO \$5,000

REPATRIATION UP TO \$7,500

LIFE INSURANCE \$5,000

24 HOUR EMERGENCY WORLDWIDE-MULTI-LINGUAL TELEPHONE ASSISTANCE

For More Info: <http://www.nrcea.com/INS24hrHotline.html>

H. CREDIT CARDS:

For program deposit only (**not final payment**) check:
 VISA Mastercard American Express Amount Charged \$ _____

_____ / _____
Card Number (13 or more numbers) Exp Date

SIGNATURE (as on card) PRINT name (as on card)

CHANGE FEES of at least \$35 apply for each change you make. Some "changes" may result in cancellation fees.

CANCELLATIONS are effective the day received in writing by NRCSA in Milwaukee. All payments less \$140 per program fully refundable up to 60 days prior to departure. For cancellations within 60 days of departure, \$250 per person is not refundable; within 40 days of departure, less 50% of program cost or \$300 per person (whichever is greater); within 14 days of departure, 100% of program cost is non refundable. Airline cancellation penalties, if any, are in addition to those outlined above. Cancellation penalties are per person, per program. Medical, baggage (above that included) and cancellation insurance is strongly recommended. Attach a note if you have a medical condition or Rx which the school/center should know about.

CONDITIONS: Each institution listed herein is independent of the National Registration Center for Study Abroad (hereinafter referred to as NRCSA, controls, and will periodically make changes in the program. Classes may fill, be changed, or dropped by the sponsoring academic institutions. NRCSA is a division of Mibar Ltd. and is not responsible for these changes or other actions beyond its control such as strikes, postal delays or loss, mechanical breakdowns, weather, government actions, delay or acts/omissions of suppliers. NRCSA may make changes or substitutions or cancel any program. In the event of entire program cancellation by NRCSA, liability is limited to refunding all monies paid to NRCSA for said program. Passengers electing not to use portions of a program shall not be entitled to a refund. No agent or representative of NRCSA shall have the right to alter the provisions listed herein. Costs based on tariffs and exchange rates effective the date of printing of this material, and are subject to change. Additional costs resulting from such change will be paid by the participant. Registrations are valid when accepted by NRCSA in Milwaukee. The passage contract used by the airline, when issued, is the sole agreement between it and you. Photographs of or statements by participants may be used by NRCSA. NRCSA, group leaders or foreign coordinators, at their discretion, may get medical assistance for participants, or place them in a hospital, or fly them back to the U.S. for medical treatment. All costs related to medical treatment or evacuation will be paid by the participant. As visitors you are expected to adhere to foreign rules and customs. If the foreign staff feels you are not adhering to these rules and customs, your participation in the program shall terminate immediately without refund whatsoever. A "homestay" is defined as living with a local person(s) in the foreign country and may not be multi generational, multinational, etc. It is the responsibility of the participant to have required proof of citizenship and visa(s) if applicable - check with the consulate of the country(s) you will be visiting.

INFORMATION USE: Information provided to NRCSA will be shared with participating organizations to facilitate your registration.

NOTE: Classes canceled in honor of local holidays are not made up. Foreign Language schools use placement tests. If there is no group at your level, smaller group or tutor classes may be substituted with fewer hours per week. Classes are conducted entirely in the target language. See **Fast Facts Guide** for more information.